



INDEX	PAGE(S)
Mini-Racking	112 - 113
Preconfigured Models . . .	114 - 116
Accessories	117 - 119
Components	120 - 125

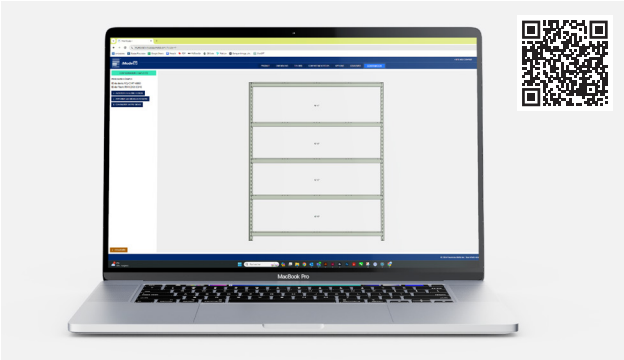
SPIDER® MINI-RACKING SYSTEM

With a wide range of dimensions and options available, industrial-quality Rousseau Mini-Racking units offer an efficient way to store bulky items in a scalable system that easily adapts to specific needs.

The Spider® Mini-Racking system is heavy duty, easy to assemble, and is the most versatile and complete solution of its type on the market.

Designed for intensive use, the system helps you to use the space you have available to its full potential, in areas such as warehouses, repair shops and distribution centers.

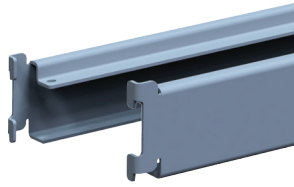
CUSTOMIZE YOUR MINI-RACKING WITH THE MYMODEL-R ONLINE CONFIGURATOR



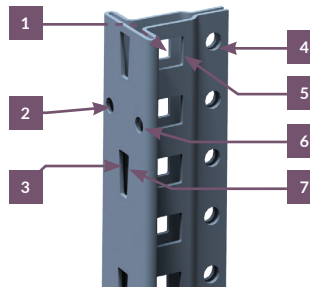
THE ROUSSEAU DIFFERENCE



Steel beams designed for several decking types: steel, wire mesh and wood.



The distinctive "claw" at the end of each beam hooks onto the front of the posts for extra structural rigidity and incredibly fast assembly.



The common post is compatible with Mini-Racking and industrial shelving.



Using a combination of modular drawers with a shelving unit joined to the Mini-Racking structure, bulky items and small parts can be stored together, see pages 91-92.

GENERAL DIMENSIONS



NOTE: Popular dimensions are shown in red.

PRECONFIGURED MODELS



WHEN ORDERING, MODEL NUMBERS MUST BE COMPLETED AS FOLLOWS

	Starter Unit	Add-on Unit
BOLTED uprights	D	A
WELDED uprights	E	B

	S	W	-
Steel decking	S		
Wire mesh decking		W	
Without decking			-

SR_5001_

e.g., SRD5001S
For a starter unit with bolted uprights and steel decking.

MINI-RACKING WITH CHOICE OF DECKING

The beams are designed to support steel shelves (SR40, SH20), wire mesh decking (SR42) or wood panels at least 5/8" thick.

STEEL

- To order a unit with steel decking, add S to the product number

WIRE

- To order a unit with wire mesh decking, add W to the product number
- Not compatible with 18"D units

FOR WOOD PANELS

- To order a unit without decking (e.g., for use with wood decking), leave the product number as is



SRE5127S
Starter unit



SRB5127S
Add-on unit



SRE5127W
Starter unit



SRB5127W
Add-on unit



SRE5127
Starter unit



SRB5127
Add-on unit



MINI-RACKING WITH MEDIUM-DUTY BEAMS

DIMENSIONS			NO. OF DECKING LEVELS	
W	D	H	3	4
48"	18"	75"	SR_5001_	SR_5021_
	24"		SR_5002_	SR_5022_
	36"*		SR_5003_	SR_5023_
	48"*		SR_5004_	SR_5024_
	18"	87"	SR_5005_	SR_5025_
	24"		SR_5006_	SR_5026_
	36"*		SR_5007_	SR_5027_
	48"*		SR_5008_	SR_5028_
60"	18"	75"	SR_5051_	SR_5071_
	24"		SR_5052_	SR_5072_
	36"*		SR_5053_	SR_5073_
	48"*		SR_5054_	SR_5074_
	18"	87"	SR_5055_	SR_5075_
	24"		SR_5056_	SR_5076_
	36"*		SR_5057_	SR_5077_
	48"*		SR_5058_	SR_5078_
24"	99"	—	SR_5080_	
36"*		—	SR_5081_	
48"*		—	SR_5082_	
48"*		—	SR_5082_	
72"	18"	75"	SR_5101_	SR_5121_
	24"		SR_5102_	SR_5122_
	36"*		SR_5103_	SR_5123_
	48"*		SR_5104_	SR_5124_
	18"	87"	SR_5105_	SR_5125_
	24"		SR_5106_	SR_5126_
	36"*		SR_5107_	SR_5127_
	48"*		SR_5108_	SR_5128_
	24"	99"	—	SR_5130_
	36"*		—	SR_5131_
	48"*		—	SR_5132_
	48"*		—	SR_5132_

NOTE: *Mini-Racking units in these sizes can be joined to back-to-back shelving units of the same depth.

TIE BARS

- Preconfigured models include one to three tie bars depending on their dimensions.

DEPTH	NO. OF TIE BARS		
	STEEL	WIRE MESH	WOOD
18"	1	NA	1
24"	1	1	1
36"	1	1	2
48"	1	1	3

NOTE: For load capacity table, see page 121.

MINI-RACKING WITH HEAVY-DUTY BEAMS

DIMENSIONS			NO. OF DECKING LEVELS	
W	D	H	3	4
48"	18"	75"	SR_5151_	SR_5171_
	24"		SR_5152_	SR_5172_
	36"*		SR_5153_	SR_5173_
	48"*		SR_5154_	SR_5174_
	18"	87"	SR_5155_	SR_5175_
	24"		SR_5156_	SR_5176_
	36"*		SR_5157_	SR_5177_
	48"*		SR_5158_	SR_5178_
24"	99"	—	SR_5180_	
36"*		—	SR_5181_	
48"*		—	SR_5182_	
48"*		—	SR_5182_	
96"	18"	75"	SR_5201_	SR_5221_
	24"		SR_5202_	SR_5222_
	36"*		SR_5203_	SR_5223_
	48"*		SR_5204_	SR_5224_
	18"	87"	SR_5205_	SR_5225_
	24"		SR_5206_	SR_5226_
	36"*		SR_5207_	SR_5227_
	48"*		SR_5208_	SR_5228_
	24"	99"	—	SR_5230_
	36"*		—	SR_5231_
	48"*		—	SR_5232_
	48"*		—	SR_5232_

NOTE: *Mini-Racking units in these sizes can be joined to back-to-back shelving units of the same depth.

TIE BARS

- Preconfigured models include one to three tie bars depending on their dimensions

WIDTH	DEPTH	NO. OF TIE BARS		
		STEEL	WIRE MESH	WOOD
72"	18"	1	ND	2
	24"	1	1	2
	36"	1	1	3
	48"	1	1	3
96"	18"	1	ND	2
	24"	1	1	2
	36"	1	1	3
	48"	2	2	3

NOTE: For load capacity table, see page 121.

PRECONFIGURED MODELS

MINI-RACKING FOR STANDARD-SIZED WOOD DECKING



SRD7031
Starter unit



SRA7031
Add-on unit

MINI-RACKING FOR STANDARD-SIZED WOOD DECKING

- These dimensions are designed to limit the need to cut the wood decking
- Four long-span levels with heavy-duty beams
- Bolted uprights (requires assembly)

STARTER UNIT	ADD-ON UNIT	W×D×H
SRD7031	SRA7031	72" × 48½" × 87"
SRD7032	SRA7032	72" × 48½" × 99"
SRD7033	SRA7033	96½" × 24" × 87"
SRD7034	SRA7034	96½" × 24" × 99"
SRD7035	SRA7035	96½" × 48" × 87"
SRD7036	SRA7036	96½" × 48" × 99"
SRD7037	SRA7037	96½" × 48½" × 87"
SRD7038	SRA7038	96½" × 48½" × 99"

NOTE: Wood decking is not available from Rousseau.



TIRE RACK BEAMS

SR20



- Sold in pairs
- Load capacity: 340lb. per pair
- For storing tires of different sizes up to 17" dia. (light truck and SUV)
- Designed with a sloped surface to prevent tire deformation
- 72"W beams require an SR25 tie bar installed in the center
- 15"D units recommended for tires
- 12"D units recommended for rims

PRODUCT NO.	WIDTH
SR20-36	36"
SR20-48	48"
SR20-60	60"
SR20-72	72"

BATTERY SHELF



- Shelf includes 2 heavy-duty beams and 13 tie bars
- Includes a front stop and two side rails to prevent batteries from falling accidentally
- 15° slope for first in first out (FIFO) battery handling
- Galvanized steel

PRODUCT NO.	W × D	NO. OF BATTERIES (MEDIUM SIZE)
SRP9094	36" × 36"	15
SRP9093	36" × 48"	21
SRP9091	48" × 36"	20
SRP9092	48" × 48"	28

HANGING RAIL

SR62



- Load capacity: 300lb. per rail
- Hooks onto Spider® posts; no bolts required
- Includes a security mechanism to prevent accidental unhooking
- Three installation positions possible: one in the middle and two closer to the edges
- Compatible with SR63-02 hooks (not included)
- The hooks can rotate once installed on the rail. They can be installed and removed at any time, even when the rail is secured in place
- Rail and adapters made of galvanized steel

SINGLE RAIL	W × D
SR62-601801	60" × 18"
SR62-602401	60" × 24"
SR62-603601	60" × 36"
SR62-721801	72" × 18"
SR62-722401	72" × 24"
SR62-723601	72" × 36"
SR62-961801	96" × 18"
SR62-962401	96" × 24"
SR62-963601	96" × 36"

DOUBLE RAIL	W × D
SR62-602402	60" × 24"
SR62-603602	60" × 36"
SR62-722402	72" × 24"
SR62-723602	72" × 36"
SR62-962402	96" × 24"
SR62-963602	96" × 36"

NOTE: When a Mini-Racking unit is joined to a back-to-back shelving unit, call Customer Service for SR62 hanging rail compatibility information.

RAIL HOOK

SR63



- Load capacity: 50lb. per hook
- Hook can rotate once installed on a SR62 rail
- Can be installed and removed at any time, even when the rail is secured in place

PRODUCT NO.	D × H
SR63-02	2½"D × 5"H



ACCESSORIES

LAMINATED HARDWOOD TOP FOR SHELVING SR90



- For installation between two shelving units
- Must be ordered with a pair of SH74 supports or used in a storage unit with a work surface

PRODUCT NO.	W × D
SR90-6024A	60" × 24"
SR90-7224A	72" × 24"
SR90-9624A	96" × 24"

WOOD TOP SUPPORT SH74



- Sold in pairs
- Hooks onto the sides of SH or SR uprights; no tools required
- Supports an SR90 hardwood top between two shelving units
- Galvanized steel

PRODUCT NO.	WIDTH
SH74-24	24"

LABEL HOLDER NC32



- Sold in pairs
- Attaches to SR21 medium-duty or SR22 heavy-duty beams
- For use with self-adhesive labels only

PRODUCT NO.	WIDTH
NC32-3601	36"
NC32-4201	42"
NC32-4801	48"
NC32-6001	60"
NC32-6601	66"
NC32-7201	72"
NC32-9601	96"

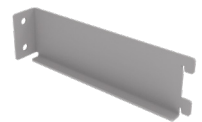
DIVIDING RODS SH56



- Sold in pairs
- ¼" dia. stainless steel rods
- Includes a 90° bend at one end to keep it in place
- Excellent chemical and corrosion resistance
- Superior rigidity to the plastic rods often found on the market for this type of application

PRODUCT NO.	HEIGHT
SH56-72	72"
SH56-84	84"
SH56-96	96"

WALL SPACERS SR45



- Sold in pairs
- Creates a 9" space between the rack and wall
- Hooks into the delta holes of SR posts without tools; must be secured in place with a plastic clip (included)
- Galvanized steel

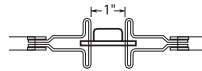
PRODUCT NO.	DEPTH
SR45-09	9"

BACK-TO-BACK SPACERS SR48



- Sold in pairs
- Used for joining two Mini-Racking sections back to back with a 1" space between posts for beam adjustment
- Galvanized steel

PRODUCT NO.
SR48



POST SPACERS SR48



- Sold in pairs
- Creates an 18" space between two back-to-back tire racks
- Hooks into the delta holes of SR posts without tools; must be secured in place with plastic clips (included)
- Galvanized steel

PRODUCT NO.	DEPTH
SR48-18	18"

SINGLE DIVIDER SR61



- Divides objects and parts that lean vertically against the back of a Mini-Racking unit
- Installs on medium-duty (SR21) or heavy-duty (SR22) beams
- Divider can be adjusted laterally (left to right) without tools
- Compatible with 24"D shelving and deeper

PRODUCT NO.	DEPTH
SR61-2401	24"

DOUBLE DIVIDER

SR60



- Supports parts and boxes stored vertically in a Mini-Racking unit. The parts lean against the "D" of the divider
- Installs on two medium-duty (SR21) or two heavy-duty beams (SR22)
- The space between the two beams must be 14" c/c
- Divider can be adjusted laterally (left to right) without tools
- Compatible with 24"D shelving and deeper
- Divides parts and boxes stored vertically in the unit

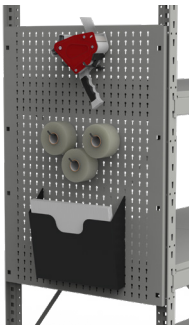
PRODUCT NO.	D×H
SR60-2415	24" × 15"



SRE4542M

SIDE UTILITY PANEL

5S SH68

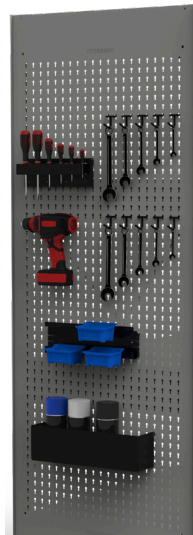


- The Side Utility Panel can be installed on either the inside or outside of the upright
- Simple tool-free assembly
- Six widths available: 15" (12 holes), 18" (14 holes), 24" (22 holes), 30" (26 holes), 36" (32 holes) and 48" (44 holes)
- Compatible with: WM9F, WM9G, WM9H, WM9J and WM9L light-duty hooks; WM9A and WM9B heavy-duty hooks, [see page 262](#)
- Compatible with: WM9C rails; WM9D, WM9M, WM9N, WM9Q, WM9P, WM9R and WM9S holders; EA50 mounts; EA52 holders; EA28 and WM21 shelves, [see pages 262-263](#)
- Load capacity: 50lb./sq. ft., 300lb. max. per panel
- To order: Complete the product number with the depth required: 15", 18", 24", 36" or 48"

PRODUCT NO.	HEIGHT
SH68-__14	14"
SH68-__20	20"
SH68-__32	32"

FULL-HEIGHT HEAVY-DUTY UTILITY PANEL

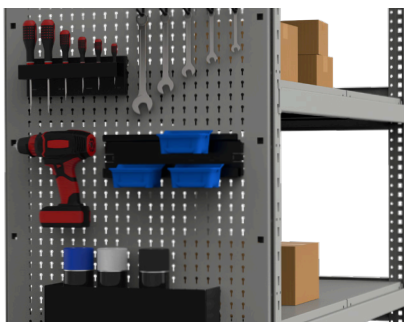
5S SH69



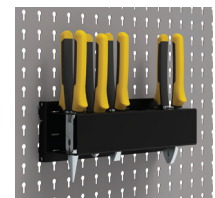
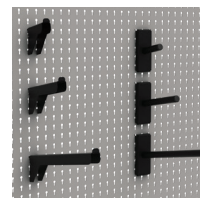
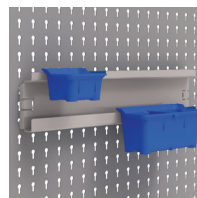
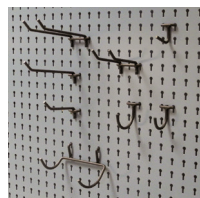
- Heavy-duty utility panel for end-of-aisle units
- Holes spaced 1" apart c/c
- Quick and easy hook-on assembly
- Creates a neater appearance
- Five widths available: 15" (13 holes), 18" (15 holes), 24" (21 holes), 30" (27 holes) and 36" (33 holes)
- Compatible with: WM9F, WM9G, WM9H, WM9J and WM9L light-duty hooks; WM9A and WM9B heavy-duty hooks, [see page 262](#)
- Compatible with: WM9C rails; WM9D, WM9M, WM9N, WM9Q, WM9P, WM9R and WM9S holders; EA50 mounts; EA52 holders; EA28 and WM21 shelves, [see pages 262-263](#)
- Load capacity: 50lb./sq. ft., 500lb. max. per panel, load evenly distributed
- Compatible with certain multi-level shelving applications. Contact Customer Service for more information
- To order: Complete the product number with the depth required: 15", 18", 24", 30" or 36"

PRODUCT NO.	HEIGHT
SH69-__51	51"
SH69-__75	75"
SH69-__87	87"

5S ACCESSORIES – HOOKS AND SUPPORTS



- To see all available 5S accessory options, [see pages 262-264](#)



COMPONENTS

STRUCTURAL COMPONENTS

POST

SR10



- Tubular T shape provides up to seven fixing zones
- Includes front holes spaced 2" apart c/c for easy adjustment of beams
- 14ga steel

PRODUCT NO.	HEIGHT
SR10-039	39"
SR10-051	51"
SR10-075	75"
SR10-087	87"
SR10-099	99"
SR10-111	111"
SR10-123	123"

SR



R5XEE-4001

WELDED MINI-RACKING UPRIGHT ASSEMBLY

SR13

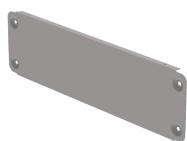


- Two heavy-duty ladder braces factory welded onto two universal posts
- Other sizes are available. Contact your customer service representative for more information

PRODUCT NO.	D×H
SR13-180752	18"×75"
SR13-180872	18"×87"
SR13-240752	24"×75"
SR13-240872	24"×87"
SR13-240992	24"×99"
SR13-300752	30"×75"
SR13-300872	30"×87"
SR13-300992	30"×99"
SR13-360752	36"×75"
SR13-360872	36"×87"
SR13-360992	36"×99"
SR13-480752	48"×75"
SR13-480872	48"×87"
SR13-480992	48"×99"

MINI-RACKING LADDER BRACES

SR30 / SR32



Single ladder brace for 15"D to 24"D units



Double interlocked ladder brace for 30"D to 48 1/2"D units

- Sold in pairs
- Recommendations:
 - One pair per 99"H upright and shorter
 - For uprights higher than 99"H, please contact your customer service representative
- For 30"D, 36"D, 48"D and 48 1/2"D units, the ladder braces interlock as shown
- The pair of ladder braces supplied with these models are double ladder braces

PRODUCT NO.	DEPTH
SR30-15	15"
SR30-16	16"
SR30-18	18"
SR30-24	24"
SR30-30	30"
SR30-32	32"
SR30-36	36"
SR30-48	48"
SR32-4801*	48 1/2"

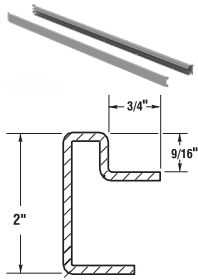
NOTES: * The SR32 ladder brace is designed to support 48"D wood panels without cutting.
15"D, 16"D, 30"D and 32"D ladder braces are suitable for record storage, see page 302.



BEAMS AND TIE BARS

MEDIUM-DUTY BEAMS

SR21



- Sold in pairs
- 14ga steel
- Install on the front of posts.
- Height can be adjusted in 2" increments c/c
- Held in place with two safety clips

PRODUCT NO.	W x H
SR21-36	36" x 2"
SR21-42	42" x 2"
SR21-48	48" x 2"
SR21-60	60" x 2"
SR21-66	66" x 2"
SR21-72	72" x 2"

NOTE: 42"W and 66"W beams are suitable for record storage, see page 320.

MEDIUM-DUTY TIE BAR

SR25 / SR26



- Hooks onto the inside of SR21 beams
- Galvanized steel

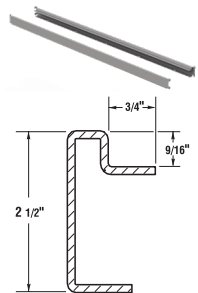
PRODUCT NO.	DEPTH
SR25-15	15"
SR25-16	16"
SR25-18	18"
SR25-24	24"
SR25-30	30"
SR25-32	32"
SR25-36	36"
SR25-48	48"
SR26-4801*	48 1/2"

NOTES: * The SR26 tie bar with SR32 ladder braces is designed to support 48"D wood panels without cutting.

15"D, 16"D, 30"D and 32"D tie bars are suitable for record storage, see page 320.

HEAVY-DUTY BEAMS

SR22 / SR23



- Sold in pairs
- 12ga steel
- Install on the front of posts.
- Height can be adjusted in 2" increments c/c
- Held in place with two safety clips

PRODUCT NO.	W x H
SR22-60	60" x 2 1/2"
SR22-72	72" x 2 1/2"
SR22-96	96" x 2 1/2"
SR23-96*	96 3/4" x 2 1/2"

NOTE: * SR23 beams can support 96"W wood panels without cutting.

HEAVY-DUTY TIE BAR

SR27 / SR28



- Hooks onto the inside of SR22 and SR23 beams
- Galvanized steel

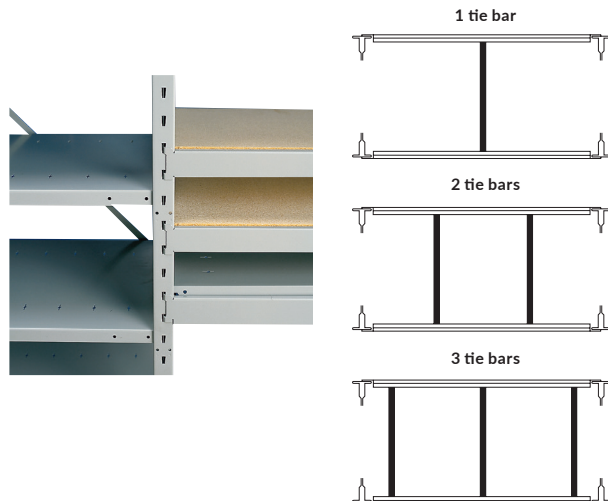
PRODUCT NO.	DEPTH
SR27-15	15"
SR27-18	18"
SR27-24	24"
SR27-30	30"
SR27-32	32"
SR27-36	36"
SR27-48	48"
SR28-4801*	48 1/2"

NOTE: * The SR28 tie bar with SR32 ladder braces is designed to support 48"D wood panels without cutting.

BEAM LOAD CAPACITIES

Shelving load capacity tests are based on ANSI MH28.1-2024a Shelving Manufacturer Association (SMA) standards.

These load capacities include a safety factor and are valid for an evenly distributed load. The capacities specified are in pounds.



MEDIUM-DUTY BEAMS

DECKING TYPE	DEPTH	WIDTH						NO. OF TIE BARS
		36"	42"	48"	60"	66"	72"	
Wood*	15" to 24"	1000	1000	975	800	725	650	1
	30" to 32"	1075	1025	925	775	700	625	2
	36"	850	875	900	750	700	625	2
	48"	875	825	775	775	750	650	3
Steel*	15" to 24"	900	900	900	800	750	650	1
	30" to 36"	1125	1125	990	800	750	650	1
	48"	1125	960	960	800	750	650	1
Wire Mesh	24" to 48"	600	700	800	800	750	650	1

HEAVY-DUTY BEAMS

DECKING TYPE	DEPTH	WIDTH			NO. OF TIE BARS
		60"	72"	96"	
Wood*	15" to 24"	1650	1600	1225	2
	30" to 32"	1850	1575	1225	2
	36"	1750	1600	1225	3
	48"	1225	1225	1225	3
Steel*	15" to 24"	1350	1350	1225	1
	30" to 36"	1925	1485	1225**	1
	48"	1440	1440	1225**	1
Wire Mesh	24" to 48"	1000	1200	1200**	1

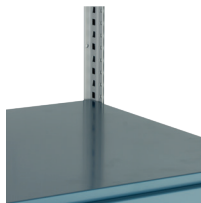
** 96"W x 48"D steel or wire mesh decking require two tie bars.

COMPONENTS

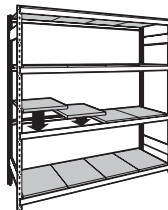
MINI-RACKING DECKING

STEEL DECKING

SR40 / SH20



- SH20: For depths of 30", 36", and 48"
- SR40: For depths of 15", 16", 18", 24", and 32"
- Steel decking provides extra shelf rigidity



To order for your specific unit dimensions, order the appropriate number of shelves and the product number(s) specified in the chart for each level of shelving.

FOR A STANDALONE MINI-RACKING UNIT OR TWO JOINED TOGETHER

Mini-Racking units in these sizes can be standalone or joined to another Mini-Racking unit.

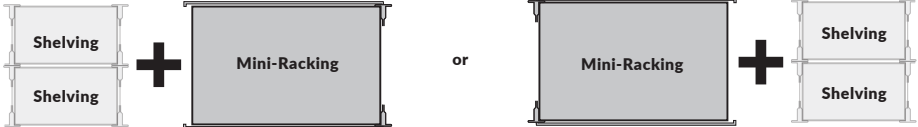


UPRIGHT ASSEMBLY DEPTH	BEAM WIDTH													
	36"		42"		48"		60"		66"		72"		96"	
	QTY	PRODUCT	QTY	PRODUCT	QTY	PRODUCT	QTY	PRODUCT	QTY	PRODUCT	QTY	PRODUCT	QTY	PRODUCT
15"	2	SR40-1815	1+	SR40-1815	2	SR40-2415	2+	SR40-1815	1+	SR40-1815	3	SR40-2415	4	SR40-2415
			1	SR40-2415			1	SR40-2415	2	SR40-2415				
16"	2	SR40-1816	1+	SR40-1816	2	SR40-2416	2+	SR40-1816	1+	SR40-1816	3	SR40-2416	4	SR40-2416
			1	SR40-2416			1	SR40-2416	2	SR40-2416				
18"	2	SR40-1818	1+	SR40-1818	2	SR40-2418	2+	SR40-1818	1+	SR40-1818	3	SR40-2418	4	SR40-2418
			1	SR40-2418			1	SR40-2418	2	SR40-2418				
24"	2	SR40-1824	1+	SR40-1824	2	SR40-2424	2+	SR40-1824	1+	SR40-1824	3	SR40-2424	4	SR40-2424
			1	SR40-2424			1	SR40-2424	2	SR40-2424				
30"	2	SH20-3018	1+	SH20-3018	2	SH20-3024	2+	SH20-3018	1+	SH20-3018	3	SH20-3024	4	SH20-3024
			1	SH20-3024			1	SH20-3024	2	SH20-3024				
32"	2	SR40-1832	1+	SR40-1832	2	SR40-2432	2+	SR40-1832	1+	SR40-1832	3	SR40-2432	4	SR40-2432
			1	SR40-2432			1	SR40-2432	2	SR40-2432				
36"	2	SH20-3618	1+	SH20-3618	2	SH20-3624	2+	SH20-3618	1+	SH20-3618	3	SH20-3624	4	SH20-3624
			1	SH20-3624			1	SH20-3624	2	SH20-3624				
48"	2	SH20-4818	1+	SH20-4818	2	SH20-4824	2+	SH20-4818	1+	SH20-4818	3	SH20-4824	4	SH20-4824
			1	SH20-4824			1	SH20-4824	2	SH20-4824				



FOR A MINI-RACKING UNIT JOINED TO TWO SHELVING UNITS

Mini-Racking units in these sizes can be joined to back-to-back shelving units of the same depth.



UPRIGHT ASSEMBLY DEPTH	BEAM WIDTH													
	36"		42"		48"		60"		66"		72"		96"	
	QTY	PRODUCT	QTY	PRODUCT	QTY	PRODUCT	QTY	PRODUCT	QTY	PRODUCT	QTY	PRODUCT	QTY	PRODUCT
30"	1+	SH20-3018	2+	SH20-3012	4	SH20-3012	4	SH20-3015	2+	SH20-3015	4	SH20-3018	4	SH20-3024
	1	SH20-3015	1	SH20-3015					2	SH20-3018				
36"	1+	SH20-3618	2+	SH20-3612	4	SH20-3612	4	SH20-3615	2+	SH20-3618	4	SH20-3618	4	SH20-3624
	1	SH20-3615	1	SH20-3615					2	SH20-3615				
48"	1+	SH20-4818	2+	SH20-4812	4	SH20-4812	4	SH20-4815	2+	SH20-4818	4	SH20-4818	4	SH20-4824
	1	SH20-4815	1	SH20-4815					2	SH20-4815				

FOR A MINI-RACKING UNIT JOINED TO FOUR SHELVING UNITS

Mini-Racking units in these sizes can be joined to two back-to-back shelving units of the same depth, one on each side of the Mini-Racking unit.



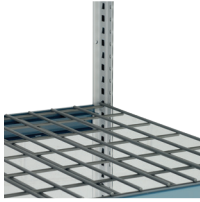
UPRIGHT ASSEMBLY DEPTH	BEAM WIDTH													
	36"		42"		48"		60"		66"		72"		96"	
	QTY	PRODUCT	QTY	PRODUCT	QTY	PRODUCT	QTY	PRODUCT	QTY	PRODUCT	QTY	PRODUCT	QTY	PRODUCT
30"	1	SH20-3015	2+	SH20-3012	3	SH20-3015	1+	SH20-3012	1+	SH20-3012	6	SH20-3012	2+	SH20-3012
	1+	SH20-3018	1	SH20-3015			3	SH20-3015	1+	SH20-3015	1+	SH20-3018	4	SH20-3018
36"	1	SH20-3615	2+	SH20-3612	3	SH20-3615	1+	SH20-3612	1+	SH20-3612	6	SH20-3612	2+	SH20-3612
	1+	SH20-3618	1	SH20-3615			3	SH20-3615	1+	SH20-3615	1+	SH20-3618	4	SH20-3618
48"	1	SH20-4815	2+	SH20-4812	3	SH20-4815	1+	SH20-4812	1+	SH20-4812	6	SH20-4812	2+	SH20-4812
	1+	SH20-4818	1	SH20-4815			3	SH20-4815	1+	SH20-4815	2	SH20-4818	4	SH20-4818



COMPONENTS

WIRE MESH DECKING

SR42



- Grid-pattern shelves made from ¼" dia. painted steel rods welded together
- Color: Modern Gray 745
- Product meets fire code standards
- Wire mesh decking is a great alternative to steel decking



To order for your specific unit dimensions, order the appropriate number of shelves and the product number(s) specified in the chart for each level of shelving.

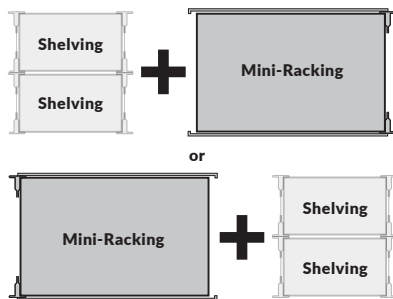
FOR A STANDALONE MINI-RACKING UNIT OR TWO JOINED TOGETHER



FOR A MINI-RACKING UNIT JOINED TO FOUR SHELVING UNITS



FOR A MINI-RACKING UNIT JOINED TO TWO SHELVING UNITS



UPRIGHT ASSEMBLY DEPTH	BEAM WIDTH																	
	36"		42"		48"		60"		66"		72"		96"					
	QTY	PRODUCT NO.	QTY	PRODUCT NO.	QTY	PRODUCT NO.	QTY	PRODUCT NO.	QTY	PRODUCT NO.	QTY	PRODUCT NO.	QTY	PRODUCT NO.				
24"	2	SR42-1824	1+	SR42-1824	1	SR42-2424	2	SR42-2424	1	SR42-1824	1+	SR42-1824	2	SR42-2424	3	SR42-2424	4	SR42-2424
30"	2	SR42-1830	1+	SR42-1830	1	SR42-2430	2	SR42-2430	1	SR42-1830	1+	SR42-1830	2	SR42-2430	3	SR42-2430	4	SR42-2430
36"	2	SR42-1836	1+	SR42-1836	1	SR42-2436	2	SR42-2436	1	SR42-1836	1+	SR42-1836	2	SR42-2436	3	SR42-2436	4	SR42-2436
48"	2	SR42-1848	1+	SR42-1848	1	SR42-2448	2	SR42-2448	1	SR42-1848	1+	SR42-1848	2	SR42-2448	3	SR42-2448	4	SR42-2448

WOOD DECKING DIMENSIONS

- 30"D, 36"D and 48"D Mini-Racking units can be joined to two back-to-back shelving units (except 96½"W). Please see technical guide S52 for exact wood decking dimensions for your specific installation.

IMPORTANT

Wood decking is not available from Rousseau.
 Our beams are designed to support plywood or particle board panels at least ¾" thick.

