

SHELVING WITH SLOPED SHELVES



| INDEX | PAGE(S) |
|------------------------------|-----------|
| Shelving with Sloped Shelves | 104 |
| Preconfigured Models . . . | 105 - 107 |
| Components | 108 - 111 |

SHELVING WITH SLOPED SHELVES

Rousseau shelving with sloped shelves provides superior-quality gravity flow storage that integrates perfectly with other products in our Spider® range. This unique product on the market is available in a wide range of dimensions to fulfill your exact requirements.

With an average slope of 15 degrees, sloped shelves are perfect for rear-loading applications (flow rack). These units help to create a "first in, first out" (FIFO) system. Shelving units without rear access are also available for more conventional storage.

Sloped shelves provide optimum visibility for items stored on shelves above the user's eye level. For shelves below this level, the extra angle reduces visibility of the shelf contents. If visibility is more important than flow in your system, we recommend installing lower shelves at right angles (SH20 / 21).



SRE1F-EE750501 + SRG1F-EE750501



SRE1T-EE750502*

WHEN ORDERING, MODEL NUMBERS MUST BE COMPLETED AS FOLLOWS

H for posts with a smooth surface
R for posts with a perforated surface

SH SR

BOLTED uprights
WELDED uprights

Starter Unit: D (bolted), E (welded)
Add-on Unit: A (bolted), B (welded)

S _ _ T-EE750401

1 for open shelving
2 for closed shelving

e.g., SHD1T - EE750401

For an open shelving starter unit with smooth surface posts, bolted uprights 36"W, 24"D, 75"H and with four sloped shelves.

NOTE: A sloped shelf (SH27) can be replaced with a right-angled BOX shelf (SH20/21), see page 108.

OPEN AND CLOSED SHELVING

HERE ARE SOME OF OUR MOST POPULAR PRECONFIGURED MODELS OF SHELVING UNITS

- The preconfigured models in this section include open or closed uprights and sloped shelves
- The shelves have perforations for SH52 dividers and SH57 guides in 1/2" increments c/c. Extra perforations have also been added on each side for aligning an SH52 divider or an SH57 guide with the side of the post (this part acts as a side edge and prevents interference between stored items and the post fold)
- SH52 dividers are available for 18"D and 24"D shelving only
- A sloped shelf can be replaced with a right-angled BOX shelf, see page 108
- The closed shelving preconfigured models in this section include back panels and a front base
- The open shelving preconfigured models in this section include a back brace

OPEN SHELVING



SRE1T-EE750501
Starter unit



SRB1T-EE750501
Add-on unit

CLOSED SHELVING



SRE2T-EE750501
Starter unit



SRB2T-EE750501
Add-on unit

| DIMENSIONS | | | NUMBER OF SHELVES | | |
|------------|-----|-----|-------------------|------------------|------------------|
| W | D | H | 4 | 5 | 6 |
| 36" | 18" | 75" | S _ _ T-EC750401 | S _ _ T-EC750501 | S _ _ T-EC750601 |
| | 24" | | S _ _ T-EE750401 | S _ _ T-EE750501 | S _ _ T-EE750601 |
| | 30" | | S _ _ T-EH750401 | S _ _ T-EH750501 | S _ _ T-EH750601 |
| | 36" | | S _ _ T-EJ750401 | S _ _ T-EJ750501 | S _ _ T-EJ750601 |
| | 18" | 87" | S _ _ T-EC870401 | S _ _ T-EC870501 | S _ _ T-EC870601 |
| | 24" | | S _ _ T-EE870401 | S _ _ T-EE870501 | S _ _ T-EE870601 |
| | 30" | | S _ _ T-EH870401 | S _ _ T-EH870501 | S _ _ T-EH870601 |
| | 36" | | S _ _ T-EJ870401 | S _ _ T-EJ870501 | S _ _ T-EJ870601 |
| | 18" | 99" | S _ _ T-EC990401 | S _ _ T-EC990501 | S _ _ T-EC990601 |
| | 24" | | S _ _ T-EE990401 | S _ _ T-EE990501 | S _ _ T-EE990601 |
| | 30" | | S _ _ T-EH990401 | S _ _ T-EH990501 | S _ _ T-EH990601 |
| | 36" | | S _ _ T-EJ990401 | S _ _ T-EJ990501 | S _ _ T-EJ990601 |
| 42" | 18" | 75" | S _ _ T-GC750401 | S _ _ T-GC750501 | S _ _ T-GC750601 |
| | 24" | | S _ _ T-GE750401 | S _ _ T-GE750501 | S _ _ T-GE750601 |
| | 30" | | S _ _ T-GH750401 | S _ _ T-GH750501 | S _ _ T-GH750601 |
| | 36" | | S _ _ T-GJ750401 | S _ _ T-GJ750501 | S _ _ T-GJ750601 |
| | 18" | 87" | S _ _ T-GC870401 | S _ _ T-GC870501 | S _ _ T-GC870601 |
| | 24" | | S _ _ T-GE870401 | S _ _ T-GE870501 | S _ _ T-GE870601 |
| | 30" | | S _ _ T-GH870401 | S _ _ T-GH870501 | S _ _ T-GH870601 |
| | 36" | | S _ _ T-GJ870401 | S _ _ T-GJ870501 | S _ _ T-GJ870601 |
| | 18" | 99" | S _ _ T-GC990401 | S _ _ T-GC990501 | S _ _ T-GC990601 |
| | 24" | | S _ _ T-GE990401 | S _ _ T-GE990501 | S _ _ T-GE990601 |
| | 30" | | S _ _ T-GH990401 | S _ _ T-GH990501 | S _ _ T-GH990601 |
| | 36" | | S _ _ T-GJ990401 | S _ _ T-GJ990501 | S _ _ T-GJ990601 |
| 48" | 18" | 75" | S _ _ T-HC750401 | S _ _ T-HC750501 | S _ _ T-HC750601 |
| | 24" | | S _ _ T-HE750401 | S _ _ T-HE750501 | S _ _ T-HE750601 |
| | 30" | | S _ _ T-HH750401 | S _ _ T-HH750501 | S _ _ T-HH750601 |
| | 36" | | S _ _ T-HJ750401 | S _ _ T-HJ750501 | S _ _ T-HJ750601 |
| | 18" | 87" | S _ _ T-HC870401 | S _ _ T-HC870501 | S _ _ T-HC870601 |
| | 24" | | S _ _ T-HE870401 | S _ _ T-HE870501 | S _ _ T-HE870601 |
| | 30" | | S _ _ T-HH870401 | S _ _ T-HH870501 | S _ _ T-HH870601 |
| | 36" | | S _ _ T-HJ870401 | S _ _ T-HJ870501 | S _ _ T-HJ870601 |
| | 18" | 99" | S _ _ T-HC990401 | S _ _ T-HC990501 | S _ _ T-HC990601 |
| | 24" | | S _ _ T-HE990401 | S _ _ T-HE990501 | S _ _ T-HE990601 |
| | 30" | | S _ _ T-HH990401 | S _ _ T-HH990501 | S _ _ T-HH990601 |
| | 36" | | S _ _ T-HJ990401 | S _ _ T-HJ990501 | S _ _ T-HJ990601 |

PRECONFIGURED MODELS

BACK-TO-BACK OPEN AND CLOSED SHELVING

HERE ARE SOME OF OUR MOST POPULAR PRECONFIGURED MODELS OF SHELVING UNITS

- The preconfigured models in this section include open or closed uprights and sloped shelves
- The shelves have perforations for SH52 dividers and SH57 guides in 1½" increments c/c. Extra perforations have also been added on each side for aligning an SH52 divider or an SH57 guide with the side of the post (this part acts as a side edge and prevents interference between stored items and the post fold)
- SH52 dividers are available for 18"D and 24"D shelving only
- A sloped shelf can be replaced with a right-angled BOX shelf, [see page 108](#)
- The closed shelving preconfigured models in this section include back panels and front bases
- The open shelving preconfigured models in this section include a back brace

OPEN SHELVING



SRE1T-EE751001B
Starter unit

SRB1T-EE751001B
Add-on unit

CLOSED SHELVING



SRE2T-EE751001B
Starter unit

SRB2T-EE751001B
Add-on unit

| DIMENSIONS | | | NUMBER OF SHELVES | | |
|------------|-----|-----|-------------------|----------------|----------------|
| W | D* | H | 8 | 10 | 12 |
| 36" | 75" | 36" | S__T-EC750801B | S__T-EC751001B | S__T-EC751201B |
| | | 48" | S__T-EE750801B | S__T-EE751001B | S__T-EE751201B |
| | | 60" | S__T-EH750801B | S__T-EH751001B | S__T-EH751201B |
| | | 72" | S__T-EJ750801B | S__T-EJ751001B | S__T-EJ751201B |
| | 87" | 36" | S__T-EC870801B | S__T-EC871001B | S__T-EC871201B |
| | | 48" | S__T-EE870801B | S__T-EE871001B | S__T-EE871201B |
| | | 60" | S__T-EH870801B | S__T-EH871001B | S__T-EH871201B |
| | | 72" | S__T-EJ870801B | S__T-EJ871001B | S__T-EJ871201B |
| | 99" | 36" | S__T-EC990801B | S__T-EC991001B | S__T-EC991201B |
| | | 48" | S__T-EE990801B | S__T-EE991001B | S__T-EE991201B |
| | | 60" | S__T-EH990801B | S__T-EH991001B | S__T-EH991201B |
| | | 72" | S__T-EJ990801B | S__T-EJ991001B | S__T-EJ991201B |
| 42" | 75" | 36" | S__T-GC750801B | S__T-GC751001B | S__T-GC751201B |
| | | 48" | S__T-GE750801B | S__T-GE751001B | S__T-GE751201B |
| | | 60" | S__T-GH750801B | S__T-GH751001B | S__T-GH751201B |
| | | 72" | S__T-GJ750801B | S__T-GJ751001B | S__T-GJ751201B |
| | 87" | 36" | S__T-GC870801B | S__T-GC871001B | S__T-GC871201B |
| | | 48" | S__T-GE870801B | S__T-GE871001B | S__T-GE871201B |
| | | 60" | S__T-GH870801B | S__T-GH871001B | S__T-GH871201B |
| | | 72" | S__T-GJ870801B | S__T-GJ871001B | S__T-GJ871201B |
| | 99" | 36" | S__T-GC990801B | S__T-GC991001B | S__T-GC991201B |
| | | 48" | S__T-GE990801B | S__T-GE991001B | S__T-GE991201B |
| | | 60" | S__T-GH990801B | S__T-GH991001B | S__T-GH991201B |
| | | 72" | S__T-GJ990801B | S__T-GJ991001B | S__T-GJ991201B |
| 48" | 75" | 36" | S__T-HC750801B | S__T-HC751001B | S__T-HC751201B |
| | | 48" | S__T-HE750801B | S__T-HE751001B | S__T-HE751201B |
| | | 60" | S__T-HH750801B | S__T-HH751001B | S__T-HH751201B |
| | | 72" | S__T-HJ750801B | S__T-HJ751001B | S__T-HJ751201B |
| | 87" | 36" | S__T-HC870801B | S__T-HC871001B | S__T-HC871201B |
| | | 48" | S__T-HE870801B | S__T-HE871001B | S__T-HE871201B |
| | | 60" | S__T-HH870801B | S__T-HH871001B | S__T-HH871201B |
| | | 72" | S__T-HJ870801B | S__T-HJ871001B | S__T-HJ871201B |
| | 99" | 36" | S__T-HC990801B | S__T-HC991001B | S__T-HC991201B |
| | | 48" | S__T-HE990801B | S__T-HE991001B | S__T-HE991201B |
| | | 60" | S__T-HH990801B | S__T-HH991001B | S__T-HH991201B |
| | | 72" | S__T-HJ990801B | S__T-HJ991001B | S__T-HJ991201B |

NOTE: * The depth includes two units. e.g., 36"D = two 18"D units



SRK1F-EE750502*

WHEN ORDERING, MODEL NUMBERS MUST BE COMPLETED AS FOLLOWS

| | Standalone Unit | Starter Unit | Add-on Unit | End Unit |
|-----------------|-----------------|--------------|-------------|----------|
| BOLTED uprights | J | D | A | C |
| WELDED uprights | K | E | B | G |

↓

SR_1F-EE750401

e.g., SRJ1F - EE750401

For an open shelving standalone unit with perforated posts, bolted uprights 36"W, 24"D, 75"H and with four sloped shelves.

NOTE: A sloped shelf (SH27) can be replaced with a right-angled BOX shelf (SH20/21), see page 108.

FIFO OPEN SHELVING

HERE ARE SOME OF OUR MOST POPULAR PRECONFIGURED MODELS OF SHELVING UNITS

- The preconfigured models in this section include open uprights and sloped shelves. These preconfigured models include two dividing guides per shelf. The guides can be adjusted in 1½" increments c/c.
- The shelves have perforations for SH52 dividers and SH57 guides in 1½" increments c/c. Extra perforations have also been added on each side for aligning an SH52 divider or an SH57 guide with the side of the post (this part acts as a side edge and prevents interference between stored items and the post fold)
- SH52 dividers are available for 18"D and 24"D shelving only
- A sloped shelf can be replaced with a right-angled BOX shelf, see page 108
- These preconfigured models include single or double corner gussets (depending on configuration)



SRK1F-DC750401
Standalone Unit



SRE1F-DC75041 Starter unit SRB1F-DC750401 Add-on unit SRG1F-DC750401 End unit

| DIMENSIONS | | | | NUMBER OF SHELVES | | |
|------------|-----|-----|----------------|-------------------|----------------|--|
| W | D | H | 4 | 5 | 6 | |
| 36" | 18" | 75" | SR_1F-EC750401 | SR_1F-EC750501 | SR_1F-EC750601 | |
| | 24" | | SR_1F-EE750401 | SR_1F-EE750501 | SR_1F-EE750601 | |
| | 30" | | SR_1F-EH750401 | SR_1F-EH750501 | SR_1F-EH750601 | |
| | 36" | | SR_1F-EJ750401 | SR_1F-EJ750501 | SR_1F-EJ750601 | |
| | 18" | 87" | SR_1F-EC870401 | SR_1F-EC870501 | SR_1F-EC870601 | |
| | 24" | | SR_1F-EE870401 | SR_1F-EE870501 | SR_1F-EE870601 | |
| | 30" | | SR_1F-EH870401 | SR_1F-EH870501 | SR_1F-EH870601 | |
| | 36" | | SR_1F-EJ870401 | SR_1F-EJ870501 | SR_1F-EJ870601 | |
| | 18" | 99" | SR_1F-EC990401 | SR_1F-EC990501 | SR_1F-EC990601 | |
| | 24" | | SR_1F-EE990401 | SR_1F-EE990501 | SR_1F-EE990601 | |
| | 30" | | SR_1F-EH990401 | SR_1F-EH990501 | SR_1F-EH990601 | |
| | 36" | | SR_1F-EJ990401 | SR_1F-EJ990501 | SR_1F-EJ990601 | |
| 42" | 18" | 75" | SR_1F-GC750401 | SR_1F-GC750501 | SR_1F-GC750601 | |
| | 24" | | SR_1F-GE750401 | SR_1F-GE750501 | SR_1F-GE750601 | |
| | 30" | | SR_1F-GH750401 | SR_1F-GH750501 | SR_1F-GH750601 | |
| | 36" | | SR_1F-GJ750401 | SR_1F-GJ750501 | SR_1F-GJ750601 | |
| | 18" | 87" | SR_1F-GC870401 | SR_1F-GC870501 | SR_1F-GC870601 | |
| | 24" | | SR_1F-GE870401 | SR_1F-GE870501 | SR_1F-GE870601 | |
| | 30" | | SR_1F-GH870401 | SR_1F-GH870501 | SR_1F-GH870601 | |
| | 36" | | SR_1F-GJ870401 | SR_1F-GJ870501 | SR_1F-GJ870601 | |
| | 18" | 99" | SR_1F-GC990401 | SR_1F-GC990501 | SR_1F-GC990601 | |
| | 24" | | SR_1F-GE990401 | SR_1F-GE990501 | SR_1F-GE990601 | |
| | 30" | | SR_1F-GH990401 | SR_1F-GH990501 | SR_1F-GH990601 | |
| | 36" | | SR_1F-GJ990401 | SR_1F-GJ990501 | SR_1F-GJ990601 | |
| 48" | 18" | 75" | SR_1F-HC750401 | SR_1F-HC750501 | SR_1F-HC750601 | |
| | 24" | | SR_1F-HE750401 | SR_1F-HE750501 | SR_1F-HE750601 | |
| | 30" | | SR_1F-HH750401 | SR_1F-HH750501 | SR_1F-HH750601 | |
| | 36" | | SR_1F-HJ750401 | SR_1F-HJ750501 | SR_1F-HJ750601 | |
| | 18" | 87" | SR_1F-HC870401 | SR_1F-HC870501 | SR_1F-HC870601 | |
| | 24" | | SR_1F-HE870401 | SR_1F-HE870501 | SR_1F-HE870601 | |
| | 30" | | SR_1F-HH870401 | SR_1F-HH870501 | SR_1F-HH870601 | |
| | 36" | | SR_1F-HJ870401 | SR_1F-HJ870501 | SR_1F-HJ870601 | |
| | 18" | 99" | SR_1F-HC990401 | SR_1F-HC990501 | SR_1F-HC990601 | |
| | 24" | | SR_1F-HE990401 | SR_1F-HE990501 | SR_1F-HE990601 | |
| | 30" | | SR_1F-HH990401 | SR_1F-HH990501 | SR_1F-HH990601 | |
| | 36" | | SR_1F-HJ990401 | SR_1F-HJ990501 | SR_1F-HJ990601 | |

COMPONENTS

SHELVES AND SHELF ACCESSORIES

SLOPED SHELF

SH27



- For gravity flow storage ("first in, first out" – FIFO)
- Approx. 15° angle slope
- Includes a heavy-duty front edge to keep stored items in place. Front edge height: 1 3/8"
- 20ga steel shelves (painted steel)
- Shelf is placed on galvanized steel side supports (included)
- Includes perforations for SH52 dividers and SH57 dividing guides in 1 1/2" increments c/c
- SH52 dividers are available for 18"D and 24"D shelving only
- Extra perforations have been added to the sides to optimize alignment of the divider or guide with the post and to prevent stored items from falling
- Height can be adjusted in 1" increments, except if SR35 or SR36 corner gussets are used (in which case, can be adjusted in 2" increments)
- Sloped shelves and non-sloped SH20 and SH21 BOX shelves can be combined in the same unit

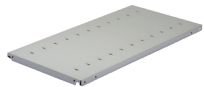
- Sloped shelf load capacity: 450lb.
- Compatible with:
 - SH99 and SH9A bases for mobile shelving
 - SH41, SH43, SH44, SH91, SH93 and SH94 doors with frame*
 - SH85 flipper door directly underneath an SH27 shelf*
 - Drawers directly underneath an SH27 shelf*
 - SH28 base
 - SH81 and SH82 label holders
 - SH37, SH38, SH66, SH68, SH69 and SR79 panels

| PRODUCT NO. | W x D | PRODUCT NO. | W x D |
|-------------|-----------|-------------|-----------|
| SH27-3018 | 30" x 18" | SH27-4218 | 42" x 18" |
| SH27-3024 | 30" x 24" | SH27-4224 | 42" x 24" |
| SH27-3030 | 30" x 30" | SH27-4230 | 42" x 30" |
| SH27-3036 | 30" x 36" | SH27-4236 | 42" x 36" |
| SH27-3618 | 36" x 18" | SH27-4818 | 48" x 18" |
| SH27-3624 | 36" x 24" | SH27-4824 | 48" x 24" |
| SH27-3630 | 36" x 30" | SH27-4830 | 48" x 30" |
| SH27-3636 | 36" x 36" | SH27-4836 | 48" x 36" |

NOTES: Not compatible with the following products: SH50 divider, SH56 dividing rod, SH65 and SH67 panels for plastic bins, SH35 corner gussets.
 *Not compatible with SR35 and SR36 corner gussets.
 One SH2A reinforcements increase the BOX shelf's rigidity (but do not increase the shelf's load capacity). Compatible only with 30" and 36" deep shelves.

BOX SHELF

SH20 / SH21



SH60

- BOX-type shelf with roll-formed and welded front and back edges
- 20ga steel. Thickness: 1 3/4"
- Includes four sturdy and compact SH60 clips
- Includes perforations spaced 3" apart c/c for installing SH52 dividers
- SH52 dividers are available for 18"D and 24"D shelving only
- To order: Complete the product number with the width required: 30", 36", 42" or 48"
- SH20: Reinforcements are available for these shelves
- SH21*: To see load capacities and shelf reinforcements available, refer to the following table

| PRODUCT NO. | DEPTH |
|-------------|-------|
| SH20-__18 | 18" |
| SH20-__24 | 24" |
| SH21-__30* | 30" |
| SH21-__36* | 36" |

NOTE: * Double bend on the sides.

SH21 SHELF LOAD CAPACITY*

Visual distortion is reduced if an SH26 reinforcement and two SH23 reinforcements are used on the shelf.

| SHELVES | CAPACITY WITHOUT REINFORCEMENT | CAPACITY WITH SH23 REINFORCEMENT | CAPACITY WITH SH23 & SH26 REINFORCEMENT |
|-----------|--------------------------------|----------------------------------|---|
| SH21-3030 | 535 | 885 | 825 |
| SH21-3036 | 420 | 860 | 690 |
| SH21-3630 | 600 | 675 | 810 |
| SH21-3636 | 420 | 700 | 775 |
| SH21-4230 | 595 | 595 | 865 |
| SH21-4236 | 480 | 570 | 735 |
| SH21-4830 | 495 | 495 | 805 |
| SH21-4836 | 525 | 525 | 770 |

GUIDES



- Guides for sloped shelves (version 01) can be used to guide items all the way down the shelf
 - Width can be adjusted in 1½" increments
 - The front of the guide slots into the bend at the front of the shelf
 - The guide is held at the back by a plastic end piece that screws into the shelf holes
 - 18"D and 24"D guides use aluminum rods, while 30"D and 36"D guides use stainless steel rods

- Dividing guides for BOX shelves (version 02) can be used to separate items
 - Width can be adjusted in 3" increments
 - The guide is held at the front and back by a plastic end piece that screws into the shelf holes
 - 18"D and 24"D guides use aluminum rods, while 30"D and 36"D guides use stainless steel rods
- Heavy-duty black plastic end pieces

| DIMENSIONS | PRODUCT NO. | |
|------------|--------------|-----------|
| | SLOPED SHELF | BOX SHELF |
| 18" | SH57-1801 | SH57-1802 |
| 24" | SH57-2401 | SH57-2402 |
| 30" | SH57-3001 | SH57-3002 |
| 36" | SH57-3601 | SH57-3602 |

STRUCTURAL COMPONENTS

POST

SR10 / SH10



- Tubular T shape provides up to seven fixing zones
- Includes perforations spaced 1" apart c/c on each side for easy adjustment of shelves
- 14ga steel
- Options:
 - SR10 universal post with perforated front surface for adding mini-racking units. Compatible with SR35 and SR36 corner gussets
 - SH10 shelving post with smooth front surface for a neater finish. Not compatible with SR35 and SR36 corner gussets

| SR UNIVERSAL POST | SH SHELVING POST | HEIGHT |
|-------------------|------------------|--------|
| SR10-039 | SH10-039 | 39" |
| SR10-051 | SH10-051 | 51" |
| SR10-075 | SH10-075 | 75" |
| SR10-087 | SH10-087 | 87" |
| SR10-099 | SH10-099 | 99" |
| SR10-111 | SH10-111 | 111" |
| SR10-123 | SH10-123 | 123" |

NOTE: The maximum height for FIFO use (with SR35 and SR36 corner gussets) is 99".

WELDED OPEN UPRIGHT

SR11 / SH11



- Upright with factory-welded side braces
- Enables faster assembly
- To order: Complete the product number with the depth required: 18", 24", 30" or 36"
- Options:
 - SR11 open upright with perforated front surface for adding mini-racking units. Compatible with SR35 and SR36 corner gussets
 - SH11 open upright with smooth front surface for a neater finish. Not compatible with SR35 and SR36 corner gussets

| SR UNIVERSAL POST | SH SHELVING POST | HEIGHT |
|-------------------|------------------|--------|
| SR11-__0752 | SH11-__0752 | 75" |
| SR11-__0872 | SH11-__0872 | 87" |
| SR11-__0992 | SH11-__0992 | 99" |

NOTE: The maximum height for FIFO use (with SR35/SR36 corner gussets) is 99".

WELDED CLOSED UPRIGHT

SR12 / SH12



- Upright with full-height factory-welded panel
- Enables faster assembly
- To order: Complete the product number with the depth required: 18", 24", 30" or 36"
- Options:
 - SR12 closed upright with perforated front surface for adding mini-racking units. Compatible with SR35 and SR36 corner gussets
 - SH12 closed upright with smooth front surface for a neater finish. Not compatible with SR35 and SR36 corner gussets

| SR UNIVERSAL POST | SH SHELVING POST | HEIGHT |
|-------------------|------------------|--------|
| SR12-__075 | SH12-__075 | 75" |
| SR12-__087 | SH12-__087 | 87" |
| SR12-__099 | SH12-__099 | 99" |

NOTE: The maximum height for FIFO use (with SR35 and SR36 corner gussets) is 99".



COMPONENTS

SHELF FRONT OR FRONT BASE SH28



- Same component used for both applications
- Quick and easy hook-on installation
- To order: Complete the product number with the width required: 30", 36", 42" or 48"

| PRODUCT NO. | HEIGHT |
|-------------|--------|
| SH28-__02 | 2" |
| SH28-__05 | 5" |

NOTE: The 2"H front base is always included with closed shelving preconfigured models (except the ones with sliding panels).

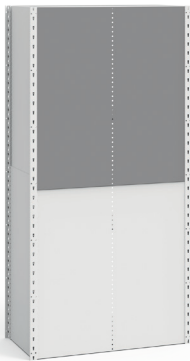
SIDE PANEL SH30



- Panel combinations:
 - 75"H posts (39"H + 39"H)
 - 87"H posts (39"H + 51"H)
 - 99"H posts (51"H + 51"H)
 - 111"H posts (39"H + 39"H + 39"H)
 - 123"H posts (39"H + 39"H + 51"H)
- To order: Complete the product number with the depth required: 18", 24", 30" or 36"

| PRODUCT NO. | HEIGHT |
|-------------|--------|
| SH30-__39 | 39" |
| SH30-__51 | 51" |

BACK PANEL SH31



- Panel combinations:
 - 75"H posts (39"H + 39"H)
 - 87"H posts (39"H + 51"H)
 - 99"H posts (51"H + 51"H)
 - 111"H posts (39"H + 39"H + 39"H)
 - 123"H posts (39"H + 39"H + 51"H)
- To order: Complete the product number with the width required: 30", 36", 42" or 48"

| PRODUCT NO. | HEIGHT |
|-------------|--------|
| SH31-__39 | 39" |
| SH31-__51 | 51" |

BACK SWAY BRACE SH33



- X-shaped factory-assembled brace
- Easy to install
- Recommendations:
 - For 99"H uprights and shorter: one brace
 - For uprights higher than 99": two braces

| PRODUCT NO. | WIDTH |
|-------------|-------|
| SH33-30 | 30" |
| SH33-36 | 36" |
| SH33-42 | 42" |
| SH33-48 | 48" |

NOTES: Please refer to technical guide S58 or contact your customer service representative for exact placement of the brace.

Do not use with FIFO shelving. Replace with SR35 and SR36 corner gusset kits.

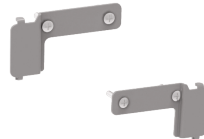
SIDE BRACES SH34



- Sold in pairs
- Enables uprights to be attached in a "ladder" for easier assembly
- Recommendations:
 - 99"H uprights or shorter: one pair of side braces
 - For uprights higher than 99"H: please refer to technical guide S58 or contact your customer service representative

| PRODUCT NO. | DEPTH |
|-------------|-------|
| SH34-18 | 18" |
| SH34-24 | 24" |
| SH34-30 | 30" |
| SH34-36 | 36" |

SINGLE CORNER GUSSET KIT SR35



- Replaces a back sway brace to provide full access to the front and rear of the shelving
- For use with an end-of-aisle post or a common post with shelves side by side and offset by at least 4" in height
- Does not allow two shelves side by side at the same height
- Installs at the front and back of the post
Compatible with SH20, SH21 and SH27 shelves, **see page 108**
- For use with SR uprights and posts only
- Not compatible with doors with frame, drawers, roll-out shelves and flipper doors

| PRODUCT NO. | |
|-------------|---------|
| SR35-02 | 1 pair |
| SR35-04 | 2 pairs |

NOTES: A minimum of three kits of two SR35 or SR36 gussets per post is required to provide proper lateral bracing.

Not to be used for shelving over 99"H, multi-level shelving or double shelf reinforcements (SHC2).

DOUBLE CORNER GUSSET KIT

SR36



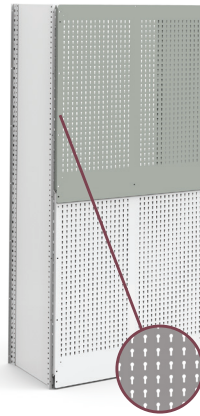
- Replaces sway brace to provide full access to the front and rear of the shelving
- For use with a common post with shelves side by side at the same height
- Installs at the front and back of the post
- Compatible with SH20, SH21 and SH27 shelves, [see page 108](#)
- For use with SR uprights and posts only
- Not compatible with doors with frame, drawers, roll-out shelves and flipper doors

| PRODUCT NO. | |
|-------------|--------|
| SR36-02 | 1 pair |

NOTES: A minimum of three kits of two SR35 or SR36 gussets per common post is required to provide proper lateral bracing.
Not to be used for shelving over 99"H, multi-level shelving or double shelf reinforcements (SHC2).

STRUCTURAL BACK UTILITY PANEL

SH79



- Utility panel for the backs of shelving
- Forms an integral part of the shelving structure
- Holes spaced 1" apart c/c
- Load capacity: maximum 250lb. per panel
- Compatible with: WM9F, WM9G, WM9H, WM9J and WM9L light-duty hooks; WM9A and WM9B heavy-duty hooks, [see page 262](#)
- Compatible with: WM9C rails; WM9D, WM9M, WM9N, WM9Q, WM9P, WM9R and WM9S holders; EA50 mounts; EA52 holders; EA28 and WM21 shelves, [see pages 262-263](#)
- Panel combinations:
 - 75"H posts (39"H + 39"H)
 - 87"H posts (39"H + 51"H)
 - 99"H posts (51"H + 51"H)
- To order: Complete the product number with the width required: 30", 36", 42" or 48"

| PRODUCT NO. | HEIGHT |
|-------------|--------|
| SH79-__39 | 39" |
| SH79-__51 | 51" |

NOTE: Used without SH31 back panels.

INSTALLATION ACCESSORIES

FLOOR ANCHOR PLATE

SH45

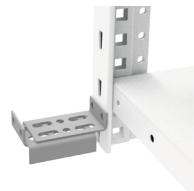


- Sold individually
- Attaches to the post for anchoring shelving sections to the ground. Distributes the load over a larger surface and protects the floor
- 12ga galvanized steel

| PRODUCT NO. |
|-------------|
| SH45 |

WALL SPACER

SR47



- Anchors shelving to the wall
- Adjusts from 3" to 4"
- Wall anchoring hardware not included (holes are 5/16" dia.)

| PRODUCT NO. |
|-------------|
| SR47-0304 |

SHIM PLATE

SH46



- Sold individually
- Levels shelving units on uneven surfaces
Slides under SH45 floor anchor plates
- 12ga or 16ga galvanized steel

| PRODUCT NO. | THICKNESS |
|-------------|-------------------|
| SH46-12 | 12 gauge (0,100") |
| SH46-16 | 16 gauge (0,060") |

LEVELING GLIDES KIT

SR49



- Sold in pairs
- Adjusts the height of Spider® Shelving units from 1¼" to 2½" on uneven surfaces
- Load capacity: maximum 750lb. per glide
- Restrictions:
 - Only compatible with 99"H shelving or shorter
 - Only compatible with SR uprights and posts
 - Not compatible with RF32 and RF36 modular drawers, RF41 and RF45 roll-out shelves and SH28 bases

| PRODUCT NO. |
|-------------|
| SR49-01 |

FLOOR ANCHORING HARDWARE

SH47



- Used for anchoring shelving to the floor
- Includes 4 cement screws

| PRODUCT NO. |
|-------------|
| SH47-04 |