



INDEX	PAGE(S)
Spider® Shelving System	86 - 87
Preconfigured Models . . .	88 - 92
Accessories	93 - 99
Components	100 - 103

THE MOST VERSATILE SHELVING SYSTEM ON THE MARKET

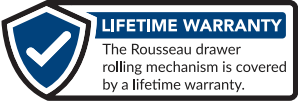
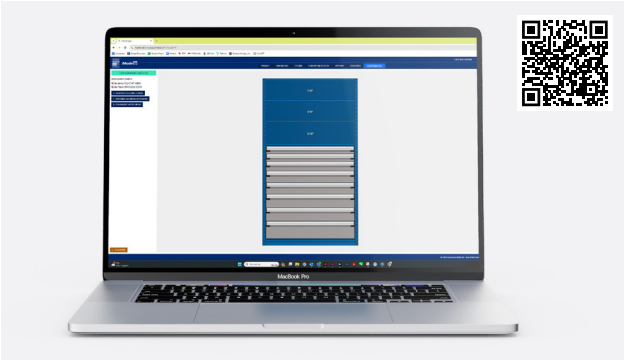
Quick to assemble and built for heavy-duty industrial use, the Spider® Shelving System meets all of your storage needs. With its vast range of accessories, it is the most versatile and flexible shelving system on the market.

- By combining shelving and Mini-Racking, you can extend the range of possibilities available
- By adding modular drawers, you can organize your small parts more efficiently
- Vertical expansion is also possible with our multi-level shelving system

Designed for intensive use, our modular storage system uses the space you have available to its full potential, in areas such as warehouses, parts departments, repair shops and distribution centers.

Trust in our expertise and enjoy peace of mind, knowing all your current and future storage needs will be met.

CUSTOMIZE YOUR SPIDER® SHELVING WITH THE MYMODEL-R ONLINE CONFIGURATOR



THE ROUSSEAU DIFFERENCE



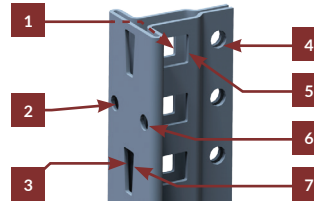
R drawers can be installed in Rousseau's Spider® Shelving System but also in over 35 commercially available shelving brands.



Easy assembly: The shelves are installed on the posts with four 14-gauge steel compression clips for quick and easy reconfiguration.



Mini-Racking can be added to maximize storage options. See page 112.

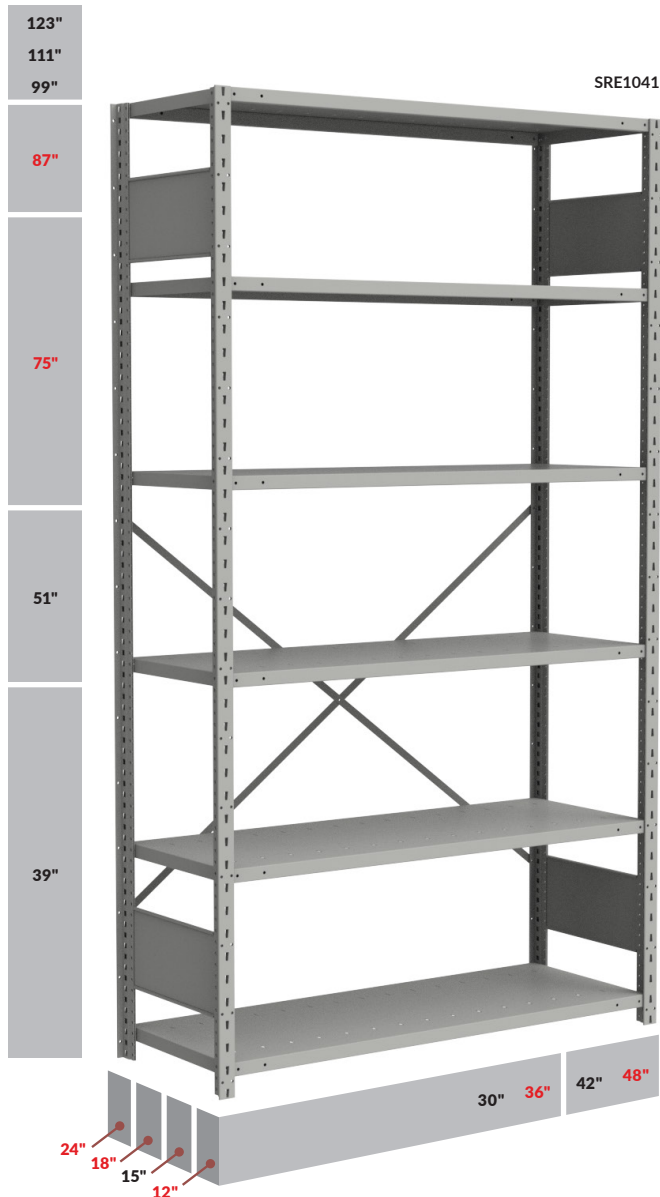


The multipurpose common post is a key structural component. Its unique tubular T shape provides up to seven fixing zones for different applications. It also has a hollow center to prevent interference between sections.



Each component has been designed to be easy to use.

GENERAL DIMENSIONS



NOTE: Popular dimensions are shown in red.

PRECONFIGURED MODELS



SRE1023



SRE2023

WHEN ORDERING, MODEL NUMBERS MUST BE COMPLETED AS FOLLOWS

H for posts with a smooth surface
R for posts with a perforated surface

SH SR BOLTED uprights
WELEDGED uprights

Starter Unit: D, E
Add-on Unit: A, B

S

001

1 for open shelving
2 for closed shelving

e.g., SHD1001

For an open shelving starter unit with smooth surface posts and bolted uprights.

36"W, 42"W AND 48"W SINGLE SHELVING UNITS, OPEN AND CLOSED

OPEN SHELVING



SRE1011
Starter unit



SRB1011
Add-on unit

HERE ARE SOME OF OUR MOST POPULAR PRECONFIGURED MODELS OF OPEN AND CLOSED SHELVING UNITS

- The preconfigured models in this section include open or closed uprights and BOX shelves
- The closed shelving preconfigured models in this section include back panels and a front base
- The open shelving preconfigured models in this section include a back brace
- Refer to sheet S58 for the shelving system offender chart.

DIMENSIONS			NUMBER OF SHELVES				
W	D	H	5	6	7	8	9
36"	12"	75"	S__001	S__007	S__013	S__019	S__225
			S__002	S__008	S__014	S__020	S__226
			S__003	S__009	S__015	S__021	S__227
			S__004	S__010	S__016	S__022	S__228
	18"	87"	S__005	S__011	S__017	S__023	S__229
			S__006	S__012	S__018	S__024	S__230
			S__401	S__407	S__413	S__419	S__625
			S__402	S__408	S__414	S__420	S__626
	24"	99"	S__403	S__409	S__415	S__421	S__627
			S__131	S__137	S__143	S__149	S__255
			S__132	S__138	S__144	S__150	S__256
			S__133	S__139	S__145	S__151	S__257
42"	12"	87"	S__134	S__140	S__146	S__152	S__258
			S__135	S__141	S__147	S__153	S__259
			S__136	S__142	S__148	S__154	S__260
			S__531	S__537	S__543	S__549	S__555
	18"	99"	S__532	S__538	S__544	S__550	S__556
			S__533	S__539	S__545	S__551	S__557
			S__031	S__037	S__043	S__049	S__355
			S__032	S__038	S__044	S__050	S__356
	24"	75"	S__033	S__039	S__045	S__051	S__357
			S__034	S__040	S__046	S__052	S__358
			S__035	S__041	S__047	S__053	S__359
			S__036	S__042	S__048	S__054	S__360
48"	18"	87"	S__431	S__437	S__443	S__449	S__455
			S__432	S__438	S__444	S__450	S__456
			S__433	S__439	S__445	S__451	S__457

CLOSED SHELVING



SRE2011
Starter unit



SRB2011
Add-on unit

NOTES: For more information about drawers in shelving, see page 130.
Shelving with drawers must be anchored to the ground with a floor anchoring kit (SH45/SH47).

36"W, 42"W AND 48"W BACK-TO-BACK SHELVING, OPEN AND CLOSED

OPEN SHELVING



SRE1011B
Starter unit



SRB1011B
Add-on unit

HERE ARE SOME OF OUR MOST POPULAR PRECONFIGURED MODELS OF BACK-TO-BACK, OPEN AND CLOSED SHELVING UNITS

- The preconfigured models in this section include open or closed uprights and BOX shelves
- The closed shelving preconfigured models in this section include back panels and front bases
- The open shelving preconfigured models in this section include a back brace
- Refer to sheet S58 for the shelving system offender chart.

CLOSED SHELVING



SRE2011B
Starter unit



SRB2011B
Add-on unit

DIMENSIONS			NUMBER OF SHELVES				
W	D*	H	10	12	14	16	
36"	24"	75"	S__001B	S__007B	S__013B	S__019B	
	36"		S__002B	S__008B	S__014B	S__020B	
	48"		S__003B	S__009B	S__015B	S__021B	
	24"		S__004B	S__010B	S__016B	S__022B	
	36"		S__005B	S__011B	S__017B	S__023B	
	48"		S__006B	S__012B	S__018B	S__024B	
	36"	24"	99"	S__401B	S__407B	S__413B	S__419B
		36"		S__402B	S__408B	S__414B	S__420B
		48"		S__403B	S__409B	S__415B	S__421B
		24"		S__131B	S__137B	S__143B	S__149B
		36"		S__132B	S__138B	S__144B	S__150B
		48"		S__133B	S__139B	S__145B	S__151B
42"	24"	75"	S__134B	S__140B	S__146B	S__152B	
	36"		S__135B	S__141B	S__147B	S__153B	
	48"		S__136B	S__142B	S__148B	S__154B	
	24"		S__531B	S__537B	S__543B	S__549B	
	36"		S__532B	S__538B	S__544B	S__550B	
	48"		S__533B	S__539B	S__545B	S__551B	
	48"	24"	75"	S__031B	S__037B	S__043B	S__049B
		36"		S__032B	S__038B	S__044B	S__050B
		48"		S__033B	S__039B	S__045B	S__051B
		24"		S__034B	S__040B	S__046B	S__052B
		36"		S__035B	S__041B	S__047B	S__053B
		48"		S__036B	S__042B	S__048B	S__054B
48"		24"	99"	S__431B	S__437B	S__443B	S__449B
		36"		S__432B	S__438B	S__444B	S__450B
		48"		S__433B	S__439B	S__445B	S__451B

NOTES: * The depth includes two units. e.g., 24" = two 12" units
 For more information about drawers in shelving, see page 130.
 Shelving with drawers must be anchored to the ground with a floor anchoring kit (SH45/SH47).

87"H CLOSED SHELVING WITH ACCESSORIES

Some of our most popular shelving units are shown below

NOTES: The 2" front base is always included with closed shelving preconfigured models.
 For help on completing the product number, see page 88.



SRE3009

SHELVING WITH DIVIDERS

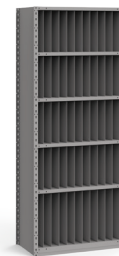
- 8 shelves
- 28 slots:
 - 28 slots 12"W×9"H
- 21 dividers, 5½"H



SRE3022

SHELVING WITH DIVIDERS

- 8 shelves
- 19 slots:
 - 18 slots 12"W×12"H
 - 1 slot 36"W×12"H
- 12 dividers, 12"H
- 6 shelf fronts



SRE3062

SHELVING WITH DIVIDERS FOR X-RAY STORAGE

- 6 shelves
- 60 slots:
 - 48 slots 3"W×16"H
 - 12 slot 3"W×20"H
- 44 dividers, 16"H
- 11 dividers, 20"H

PRODUCT NO.	W×D
S__3008	36"×12"
S__3009	36"×18"
S__3010	36"×24"

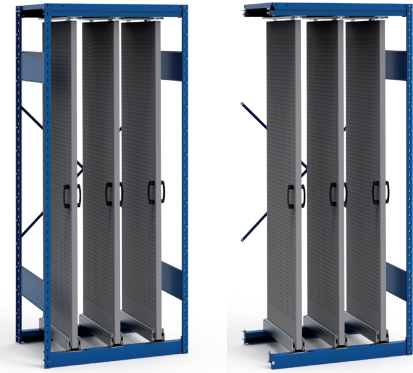
PRODUCT NO.	W×D
S__3021	36"×12"
S__3022	36"×18"
S__3023	36"×24"

PRODUCT NO.	W×D
S__3062	36"×18"



SHELVING WITH SLIDING PANELS

OPEN SHELVING



SRE1C-EE870103
Starter unit

SRB1C-EE870103
Add-on unit

HERE ARE SOME OF OUR MOST POPULAR PRECONFIGURED MODELS OF SLIDING PANELS.

- The preconfigured models in this section include open or closed uprights, sliding panels (with handles), panel support and a BOX shelf
- The closed shelving preconfigured models in this section include back panels and the open shelving preconfigured models in this section include a back brace
- For storing a wide range of items: tools, straps, cables, pipes, gaskets, etc.
- Load capacity: 300lb. per panel (weight evenly distributed)
- Refer to technical guide S84 for spacing between panels
- For 5S accessories, [see pages 262-264](#)

DIMENSIONS

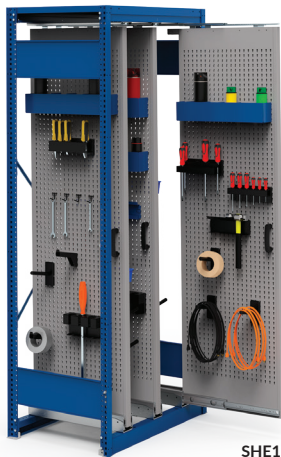
W	D	H	PRODUCT NO.	NO. OF PANELS	NO. OF HOLES
30"	18"	75"	S__C-DC750102	2	15
	24"		S__C-DE750102	2	21
	18"	87"	S__C-DC870102	2	15
	24"		S__C-DE870102	2	21
36"	18"	75"	S__C-EC750103	3	15
	24"		S__C-EE750103	3	21
	18"	87"	S__C-EC870103	3	15
	24"		S__C-EE870103	3	21
42"	18"	75"	S__C-GC750104	4	15
	24"		S__C-GE750104	4	21
	18"	87"	S__C-GC870104	4	15
	24"		S__C-GE870104	4	21
48"	18"	75"	S__C-HC750105	5	15
	24"		S__C-HE750105	5	21
	18"	87"	S__C-HC870105	5	15
	24"		S__C-HE870105	5	21

CLOSED SHELVING



SRE2C-EE870103
Starter unit

SRB2C-EE870103
Add-on unit



SHE1C-EE870103*

WHEN ORDERING, MODEL NUMBERS MUST BE COMPLETED AS FOLLOWS

H for posts with a smooth surface
R for posts with a perforated surface

Height: 75", 87"

SH SR BOLTED uprights
WELDED uprights

Starter Unit: D
Add-on Unit: A

S

C-EE__0104

1 for open shelving
2 for closed shelving

e.g., SHD1C-EE750104

For an open shelving starter unit with smooth surface posts and bolted uprights.



The panel support must be anchored to the ground to ensure stability (anchoring kit included).

SHELVING WITH MODULAR DRAWERS

Some of our most popular shelving units with drawers are shown below.

- The preconfigured models in this section include welded closed uprights and hook-on mounting brackets for Spider® shelving for quick and easy assembly
- Additional accessories available: utility panels, plastic bin panels, finishing panels, shelf dividers, doors, etc., [see pages 262-264](#)
- To order an add-on unit, add **A** to the product number



R5SEE-871817

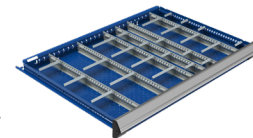
IMPORTANT

Drawer compartments are included in all models.

See number of compartments and proposed layouts in the chart below.

To order drawers without compartments, replace the last two digits of the model number with the next even number up.

e.g., R5SEC-751801 with
R5SEC-751802 without



NUMBER OF COMPARTMENTS (LAYOUT CODE)

DRAWER DIMENSIONS	3"H TO 5"H	6"H TO 8"H	9"H AND HIGHER
36"×18"D	24 (0518)	8 (0304)	6 (0203)
36"×24"D	30 (0524)	12 (0308)	9 (0206)
42"×18"D	18 (0512)	12 (0308)	6 (0203)
42"×24"D	30 (0524)	12 (0308)	8 (0304)
48"×18"D	32 (0724)	10 (0405)	8 (0304)
48"×24"D	40 (0732)	15 (0410)	8 (0304)

NOTE: For interior drawer dimensions, [see pages 272-275](#).



Shelving units with drawers must be anchored to the ground (anchoring kit included).

SHELVING WITH 18"H, 24"H, 36"H AND 48"H BANKS OF MODULAR DRAWERS

SHELVING WITH 18"H BANK OF MODULAR DRAWERS



R5SEE-871801

- 4 drawers:
 - 3 drawers, 4"H
 - 1 drawer, 6"H
- 75"H (5 shelves) or 87"H (6 shelves) shelving

W×D	75"H	87"H
36"×18"	R5SEC-751801_	R5SEC-871801_
36"×24"	R5SEE-751801_	R5SEE-871801_
42"×18"	R5SGC-751801_	R5SGC-871801_
42"×24"	R5SGE-751801_	R5SGE-871801_
48"×18"	R5SHC-751801_	R5SHC-871801_
48"×24"	R5SHE-751801_	R5SHE-871801_

SHELVING WITH 24" OF MODULAR DRAWERS



R5SEE-872401

- 5 drawers:
 - 3 drawers, 4"H
 - 2 drawers, 6"H
- 75"H (5 shelves) or 87"H (6 shelves) shelving

W×D	75"H	87"H
36"×18"	R5SEC-752401_	R5SEC-872401_
36"×24"	R5SEE-752401_	R5SEE-872401_
42"×18"	R5SGC-752401_	R5SGC-872401_
42"×24"	R5SGE-752401_	R5SGE-872401_
48"×18"	R5SHC-752401_	R5SHC-872401_
48"×24"	R5SHE-752401_	R5SHE-872401_

SHELVING WITH 36"H BANK OF MODULAR DRAWERS



R5SEE-873601

- 7 drawers:
 - 3 drawers, 4"H
 - 4 drawers, 6"H
- 75"H (5 shelves) or 87"H (6 shelves) shelving

W×D	75"H	87"H
36"×18"	R5SEC-753601_	R5SEC-873601_
36"×24"	R5SEE-753601_	R5SEE-873601_
42"×18"	R5SGC-753601_	R5SGC-873601_
42"×24"	R5SGE-753601_	R5SGE-873601_
48"×18"	R5SHC-753601_	R5SHC-873601_
48"×24"	R5SHE-753601_	R5SHE-873601_



R5SEE-873603

- 7 drawers:
 - 4 drawers, 4"H
 - 2 drawers, 6"H
 - 1 drawer, 8"H
- 75"H (5 shelves) or 87"H (6 shelves) shelving

W×D	75"H	87"H
36"×18"	R5SEC-753603_	R5SEC-873603_
36"×24"	R5SEE-753603_	R5SEE-873603_
42"×18"	R5SGC-753603_	R5SGC-873603_
42"×24"	R5SGE-753603_	R5SGE-873603_
48"×18"	R5SHC-753603_	R5SHC-873603_
48"×24"	R5SHE-753603_	R5SHE-873603_

PRECONFIGURED MODELS

SHELVING WITH 48" H BANK OF MODULAR DRAWERS



R5SEE-874801

- 8 drawers:
 - 8 drawers, 6"H
- 75"H (4 shelves) or 87"H (5 shelves) shelving

W×D	75"H	87"H
36"×18"	R5SEC-754801_	R5SEC-874801_
36"×24"	R5SEE-754801_	R5SEE-874801_
42"×18"	R5SGC-754801_	R5SGC-874801_
42"×24"	R5SGE-754801_	R5SGE-874801_
48"×18"	R5SHC-754801_	R5SHC-874801_
48"×24"	R5SHE-754801_	R5SHE-874801_



R5SEE-874803

- 9 drawers:
 - 4 drawers, 4"H
 - 4 drawers, 6"H
 - 1 drawer, 8"H
- 75"H (4 shelves) or 87"H (5 shelves) shelving

W×D	75"H	87"H
36"×18"	R5SEC-754803_	R5SEC-874803_
36"×24"	R5SEE-754803_	R5SEE-874803_
42"×18"	R5SGC-754803_	R5SGC-874803_
42"×24"	R5SGE-754803_	R5SGE-874803_
48"×18"	R5SHC-754803_	R5SHC-874803_
48"×24"	R5SHE-754803_	R5SHE-874803_



R5SEE-874805

- 10 drawers:
 - 6 drawers, 4"H
 - 4 drawers, 6"H
- 75"H (4 shelves) or 87"H (5 shelves) shelving

W×D	75"H	87"H
36"×18"	R5SEC-754805_	R5SEC-874805_
36"×24"	R5SEE-754805_	R5SEE-874805_
42"×18"	R5SGC-754805_	R5SGC-874805_
42"×24"	R5SGE-754805_	R5SGE-874805_
48"×18"	R5SHC-754805_	R5SHC-874805_
48"×24"	R5SHE-754805_	R5SHE-874805_



R5SEE-874807

- 11 drawers:
 - 4 drawers, 3"H
 - 3 drawers, 4"H
 - 4 drawers, 6"H
- 75"H (4 shelves) or 87"H (5 shelves) shelving

W×D	75"H	87"H
36"×18"	R5SEC-754807_	R5SEC-874807_
36"×24"	R5SEE-754807_	R5SEE-874807_
42"×18"	R5SGC-754807_	R5SGC-874807_
42"×24"	R5SGE-754807_	R5SGE-874807_
48"×18"	R5SHC-754807_	R5SHC-874807_
48"×24"	R5SHE-754807_	R5SHE-874807_



R5SEE-874809

- 7 drawers:
 - 2 drawers, 3"H
 - 3 drawers, 4"H
 - 2 drawers, 6"H
- 1 front-access roll-out shelf
- 75"H (4 shelves) or 87"H (5 shelves) shelving

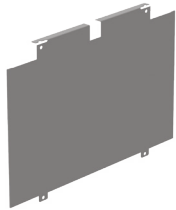
W×D	75"H	87"H
36"×18"	R5SEC-754809_	R5SEC-874809_
36"×24"	R5SEE-754809_	R5SEE-874809_
42"×18"	R5SGC-754809_	R5SGC-874809_
42"×24"	R5SGE-754809_	R5SGE-874809_
48"×18"	R5SHC-754809_	R5SHC-874809_
48"×24"	R5SHE-754809_	R5SHE-874809_



DIVIDERS

SHELF DIVIDER

SH50



- The dividers are installed by inserting into other dividers
- Two nylon clips are provided with each divider
- Sizes given are nominal dimensions (c/c shelves)
- Painted steel



PRODUCT NO.	D×H
SH50-1206	12" × 6"
SH50-1209	12" × 9"
SH50-1212	12" × 12"
SH50-1215	12" × 15"
SH50-1218	12" × 18"
SH50-1506	15" × 6"
SH50-1512	15" × 12"
SH50-1806	18" × 6"
SH50-1809	18" × 9"
SH50-1812	18" × 12"
SH50-1815	18" × 15"
SH50-1818	18" × 18"
SH50-1824	18" × 24"

PRODUCT NO.	D×H
SH50-2406	24" × 6"
SH50-2409	24" × 9"
SH50-2412	24" × 12"
SH50-2415	24" × 15"
SH50-2418	24" × 18"
SH50-2424	24" × 24"

DIVIDERS FOR X-RAY STORAGE

PRODUCT NO.	D×H
SH50-1816	18" × 16"
SH50-1820	18" × 20"

NOTE: Other sizes are available. Contact your customer service representative for more information.



SHE3062

PARTIAL DIVIDER

SH52



- Unique design for easy position changes
- Height: 5½"
- Easy tool-free installation

PRODUCT NO.	DEPTH	FOR SHELVES
SH52-1206	7½"	12"D
SH52-1506	10¼"	15"D
SH52-1806	13⅝"	18"D
SH52-2406	19⅝"	24"D

Includes pictograms for easy installation



DIVIDING RODS

SH56



- Sold in pairs
- ¼" dia. stainless steel rod
- Includes a 90° bend at one end to keep it in place
- Superior rigidity to the plastic rods often found on the market for this type of application
- Excellent corrosion and chemical resistance

PRODUCT NO.	HEIGHT
SH56-72	72"
SH56-84	84"
SH56-96	96"



SRP0410

LABEL HOLDERS

MAGNETIC LABEL HOLDER

SH82



- Magnetic plastic
- Comes in 6" lengths and can be cut to desired length with scissors or a knife

PRODUCT NO.	W×H
SH82-600	6" × 1"

NOTE: For use with paper labels (not included). Label must be ¼" high.

SELF-ADHESIVE LABEL HOLDER

SH81



- Attaches with a self-adhesive strip
- Full-width label holder for use with paper labels

PRODUCT NO.	W×H
SH81-36	36" × 1"
SH81-42	42" × 1"
SH81-48	48" × 1"

NOTE: Paper labels (not included).

ACCESSORIES

LED LIGHTS

LED LIGHT FOR SPIDER® SHELVING

SH95



- Brightens shaded areas under shelves
- Can be installed under SH20 shelves
- Brighter and more energy efficient than a fluorescent tube
- Color temperature: 5000-6000K (daylight white)
- Rigid aluminum housing
- Includes a 10-foot power cord

PRODUCT NO.	FOR
SH95-01	30"W or 36"W shelves
SH95-02	42"W or 48"W shelves



PANELS

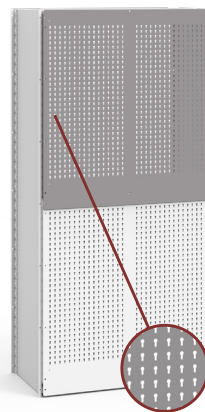
FINISHING PANEL

 SH37


- Finishing panel for end-of-aisle shelving units
- Quick and easy hook-on assembly
- Creates a neater appearance
- Compatible with certain multi-level shelving applications. Contact Customer Service for more information
- To order: Complete the product number with the depth required: 12", 15", 18" or 24"

PRODUCT NO.	HEIGHT
SH37-__075	75"
SH37-__087	87"

BACK UTILITY PANEL

 SR79


- Utility panel for the backs of shelving
- Load capacity: 250lb. per panel
- Easy to install
- Installs at the back of an existing shelving unit
- Holes spaced 1" apart c/c
- Compatible with SH31 back panels
- Four widths available: 30" (26 holes), 36" (32 holes), 42" (38 holes) and 48" (44 holes)
- Compatible with: WM9F, WM9G, WM9H, WM9J and WM9L light-duty hooks; WM9A and WM9B heavy-duty hooks, **see page 262**
- Compatible with: WM9C rails; WM9D, WM9M, WM9N, WM9Q, WM9P, WM9R and WM9S holders; EA50 mounts; EA52 holders; EA28 and WM21 shelves, **see pages 262-263**
- Compatible with SR uprights that have perforated sides
- Panel combinations:
 - 75"H posts (39"H + 39"H)
 - 87"H posts (39"H + 51"H)
 - 99"H posts (51"H + 51"H)
- To order: Complete the product number with the width required: 30", 36", 42" or 48"

PRODUCT NO.	HEIGHT
SR79-__39	39"
SR79-__51	51"

NOTE: SR79 panels are not reversible

FULL-HEIGHT HEAVY-DUTY UTILITY PANEL

 SH69

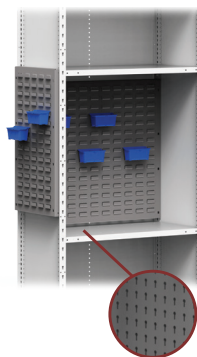

- Full-height heavy-duty utility panel for end-of-aisle shelving units
- Holes spaced 1" apart c/c
- Quick and easy hook-on assembly
- Creates a neater appearance
- Four widths available: 12" (9 holes), 15" (13 holes), 18" (15 holes) and 24" (21 holes)
- Compatible with: WM9F, WM9G, WM9H, WM9J and WM9L light-duty hooks; WM9A and WM9B heavy-duty hooks, **see page 262**
- Compatible with: WM9C rails; WM9D, WM9M, WM9N, WM9Q, WM9P, WM9R and WM9S holders; EA50 mounts; EA52 holders; EA28 and WM21 shelves, **see pages 262-263**
- Load capacity: 50lb./sq. ft., 500lb. max. per panel
- Compatible with certain multi-level shelving applications. Contact Customer Service for more information
- To order: Complete the product number with the depth required: 12", 15", 18" or 24"

PRODUCT NO.	HEIGHT
SH69-__51	51"
SH69-__75	75"
SH69-__87	87"

BACK (INTERIOR) OR SIDE PLASTIC BIN PANEL



SH65 / SH66



- SH65 Back Plastic Bin Panel: installs inside a shelving unit between two shelves
- SH66 Side Plastic Bin Panel: can be installed on either the inside or outside of the upright
- Simple tool-free assembly
- Used for hanging RG20 bins, [see page 297](#)
- Compatible with all brands of plastic bins with hanging lip on the market

BACK	W x H
SH65-3020	30" x 20"
SH65-3032	30" x 32"
SH65-3620	36" x 20"
SH65-3632	36" x 32"
SH65-4220	42" x 20"
SH65-4232	42" x 32"
SH65-4820	48" x 20"
SH65-4832	48" x 32"

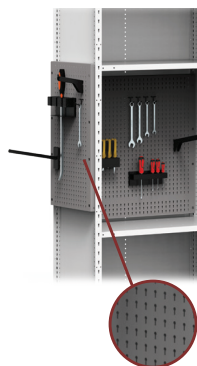
SIDE	D x H
SH66-1220	12" x 20"
SH66-1232	12" x 32"
SH66-1520	15" x 20"
SH66-1532	15" x 32"
SH66-1820	18" x 20"
SH66-1832	18" x 32"
SH66-2420	24" x 20"
SH66-2432	24" x 32"

NOTES: For SH65 installation, allow a minimum 4" c/c between shelves.
SH65 panels are not compatible with SH66 and SH68 panels when installed inside the shelving

SIDE UTILITY PANEL OR BACK UTILITY PANEL (INTERIOR)



SH67 / SH68



- The SH67 Back Utility Panel installs inside a shelving unit between two shelves
- The SH68 Side Utility Panel can be installed on either the inside or outside of the upright
- Simple tool-free assembly
- Compatible with: WM9F, WM9G, WM9H, WM9J and WM9L light-duty hooks; WM9A and WM9B heavy-duty hooks, [see page 262](#)
- Compatible with: WM9C rails; WM9D, WM9M, WM9N, WM9Q, WM9P, WM9R and WM9S holders; EA50 mounts; EA52 holders; EA28 and WM21 shelves, [see pages 262-263](#)
- Load capacity: 50lb./sq. ft., 300lb. max. per panel

BACK	W x H	NO. HOLES
SH67-3014	30" x 14"	26
SH67-3614	36" x 14"	32
SH67-4214	42" x 14"	38
SH67-4814	48" x 14"	44
SH67-3020	30" x 20"	26
SH67-3620	36" x 20"	32
SH67-4220	42" x 20"	38
SH67-4820	48" x 20"	44
SH67-3032	30" x 32"	26
SH67-3632	36" x 32"	32
SH67-4232	42" x 32"	38
SH67-4832	48" x 32"	44

SIDE	D x H	NO. HOLES
SH68-1214	12" x 14"	8
SH68-1514	15" x 14"	12
SH68-1814	18" x 14"	14
SH68-2414	24" x 14"	20
SH68-1220	12" x 20"	8
SH68-1520	15" x 20"	12
SH68-1820	18" x 20"	14
SH68-2420	24" x 20"	20
SH68-1232	12" x 32"	8
SH68-1532	15" x 32"	12
SH68-1832	18" x 32"	14
SH68-2432	24" x 32"	20

NOTES: For SH67 installation, allow a minimum 4" c/c between shelves.
SH67 panels are not compatible with SH66 and SH68 panels when installed inside the shelving.

DOORS, HANDLES AND LOCKS



ROTATING HANDLE

Door opens by turning handle to the left or the right.

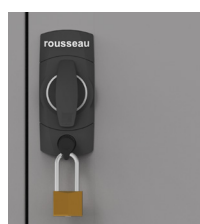


DOUBLE LOCK

- Two locks can be used for maximum security
- To order: Specify the type of lock required, e.g., SH43-3075L3 + CZ06-LP to add an LP lock as well as the lock ordered

PRODUCT NO.	DESCRIPTION
CZ05-L3	To add an L3 lock
CZ06-LP	To add an LP lock

NOTE: To add a second lock to an existing door, please contact Customer Service.



LOCK POSITION

The hasp or lock are positioned so they do not impede the hand.



L50 DIGITAL LOCK AND L100 SMART LOCK

Easier management of cabinet access permissions.



354-356

ACCESSORIES



SOLID DOORS, POLYCARBONATE DOORS AND WIRE MESH DOORS WITH FRAME

SH41 / SH43 / SH44



SRE3205



SRE3204



SRE3208

- Solid doors with frame: [SH41](#)
- Polycarbonate doors with frame: [SH43](#)
- Wire mesh doors with frame: [SH44](#)
- Solid doors featuring a closed back finish to increase rigidity and enhance aesthetics ([SH41](#))
- Polycarbonate front panels provide visibility of the shelving contents and has an excellent impact resistance ([SH43](#))
- Wire mesh doors promoting ventilation and providing visibility of the contents without opening ([SH44](#))
- The doors open 180° and have a recessed lock and handle
- Four types of lock available: L3 for a key lock, LP for a safety hasp, L50 for an digital lock or L100 for a smart lock
- Quick and easy installation
- Integrated spacer frame for installation of Rousseau modular drawers
- Frame is 2" deep
- Compatible with Rousseau Spider® shelving only
- Widths available: [30"](#), [36"](#), [42"](#) and [48"](#)
- Heights available: [39"](#), [41"](#), [51"](#), [53"](#), [63"](#), [75"](#), [87"](#) and [99"](#)
- To order: Specify the width and height of the door, e.g., [SH41-3075L3](#)

PRODUCT NO.	LOCK TYPE
SH4_ - _ _ _ L3	Key Lock
SH4_ - _ _ _ LP	Safety Hasp
SH4_ - _ _ _ L50	Digital Lock
SH4_ - _ _ _ L100	Smart Lock



352-356

NOTES: When two doors are installed side-by-side, the maximum opening is just over 90° and allows full access to the contents.

NFC transponders are not included with the smart lock, they must be ordered separately (pack of 5). [See page 356.](#)

SOLID STACKED DOORS, STACKED POLYCARBONATE DOORS AND STACKED WIRE MESH DOORS WITH FRAME

SH91 / SH93 / SH94



- Solid stacked doors with frame: [SH91](#)
- Polycarbonate stacked doors with frame: [SH93](#)
- Wire mesh stacked doors with frame: [SH94](#)
- Solid doors featuring a closed back finish to increase rigidity and enhance aesthetics ([SH91](#))
- Polycarbonate front panels provide visibility of the shelving contents and has an excellent impact resistance ([SH93](#))
- Wire mesh doors promoting ventilation and providing visibility of the contents without opening ([SH94](#))
- The doors open 180° and have a recessed lock and handle
- Four types of lock available: L3 for a key lock, LP for a safety hasp, L50 for an digital lock or L100 for a smart lock
- Quick and easy installation
- Frame is 2" deep
- Compatible with Rousseau Spider® shelving only
- To order: Specify the width and height of the door, e.g., [SH91-3075L3](#)
- Consult data sheet S64 to see all dimensions and possible configurations



352-356

PRODUCT NO.	LOCK TYPE
SH9_ - _ _ _ L3	Key Lock
SH9_ - _ _ _ LP	Safety Hasp
SH9_ - _ _ _ L50	Digital Lock
SH9_ - _ _ _ L100	Smart Lock

NOTES: Choose [SH41](#) / [SH43](#) / [SH44](#) doors if the doors are full height or start at the bottom and end at the center. Choose [SH91](#) / [SH93](#) / [SH94](#) doors if the doors start at the top and end at the center.

When two doors are installed side-by-side, the maximum opening is just over 90° and allows full access to the contents.

NFC transponders are not included with the smart lock, they must be ordered separately (pack of 5). [See page 356.](#)



R5SEE-871811



R5SEE-871807



R5SEE-871825

FLIPPER DOOR

SH85



352-356

- Full-width handle provides a comfortable grip
- Add L3 to the product number for a key lock, L50 for a digital lock and L100 for a smart lock
- 14"H c/c door for folder storage 16"H c/c door for binder storage
- Installs between two SH20 shelves
- Compatible with SH52 dividers
- Door heights available: 14", 16", 17" or 18"
- To order: Specify the height and type of lock required, e.g., SH85-3618 16L3 for a 16"H door with key lock

PRODUCT NO.	W x D	USABLE DEPTH
SH85-3018_---	30" x 18"	15"
SH85-3024_---	30" x 24"	21"
SH85-3618_---	36" x 18"	15"
SH85-3624_---	36" x 24"	21"
SH85-4218_---	42" x 18"	15"
SH85-4224_---	42" x 24"	21"
SH85-4818_---	48" x 18"	15"
SH85-4824_---	48" x 24"	21"

NOTE: NFC transponders are not included with the smart lock, they must be ordered separately (pack of 5). See page 356.

MISCELLANEOUS RAILS AND HOLDERS

PLASTIC BIN RAIL

SH62

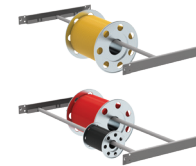


- Ideal for ends of aisles. Quick and easy hook-on assembly
- Ideal for all brands of 5"H to 7"H bins
- RG20 plastic bins sold separately, see page 297

PRODUCT NO.	DEPTH
SH62-18	18"
SH62-24	24"

SPOOL HOLDER

SH72



- Efficient spool storage for shelving
- One or two rods available
- Load capacity: 50lb. per rod, 100lb. total per double rod
- 3/4" dia. rods compatible with most spools
- Designed so the bar can be pivoted to help with changing spools
- Different spool sizes can be combined on the same rod
- To order: Complete the product number with the number or rods required: 01 or 02

CLOTHES HANGING RAIL

SH70



- Load capacity: 80lb. per rail
- Quick and easy installation
- Hooks onto the shelving posts
- Includes a 1" dia. rod and two brackets
- To order: Complete the product number with the width required: 30", 36", 42" or 48"

PRODUCT NO.	DEPTH
SH70-__18	18"
SH70-__24	24"

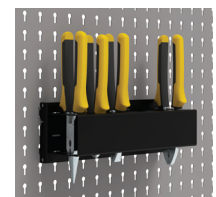
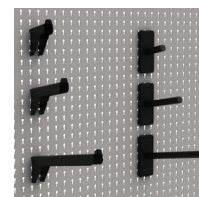
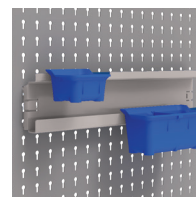
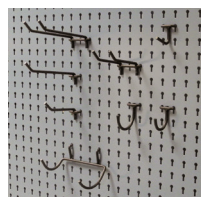
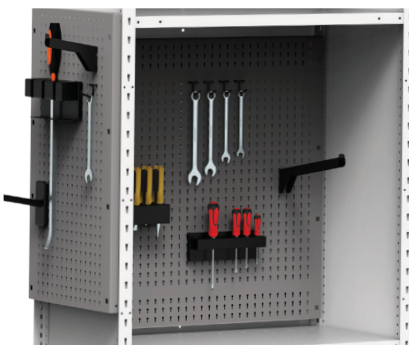
NOTE: Because space is required under the clothes hanging rail, this product is not recommended for multi-level shelving.

12"	18"	24"
6 1/2"	6 1/2"	6 1/2"
8 1/2"	8 1/2"	8 1/2"
10 1/2"	10 1/2"	10 1/2"
6 1/2" 6 1/2"	8 1/2" 8 1/2"	10 1/2" 10 1/2"
8 1/2" 8 1/2"	10 1/2" 10 1/2"	

PRODUCT NO.	W x D
SH72-3012-01	30" x 12"
SH72-3018-__	30" x 18"
SH72-3024-__	30" x 24"
SH72-3612-01	36" x 12"
SH72-3618-__	36" x 18"
SH72-3624-__	36" x 24"
SH72-4212-01	42" x 12"
SH72-4218-__	42" x 18"
SH72-4224-__	42" x 24"
SH72-4812-01	48" x 12"
SH72-4818-__	48" x 18"
SH72-4824-__	48" x 24"

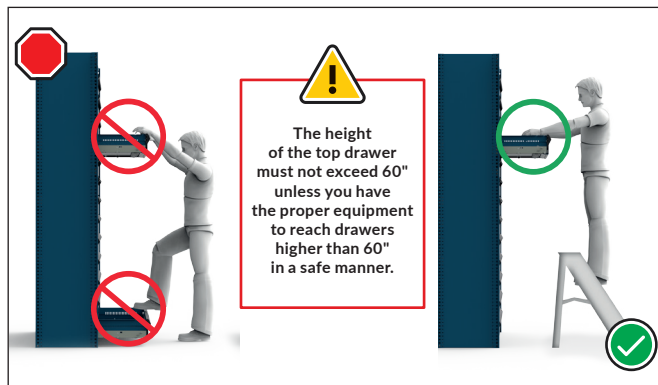
5S ACCESSORIES – HOOKS AND SUPPORTS

- To see all available 5S accessory options, see pages 262-264



ACCESSORIES

MODULAR DRAWERS AND ROLL-OUT SHELVES



MOUNTING BRACKETS FOR SPIDER® SHELVING RE30



- Quick and easy hook-on assembly
- Standard heights available: 18", 24", 30", 34", 36", 46" and 48"
- Mounting bracket kits are compatible with all Rousseau drawer widths (30", 36", 42" and 48")
- Each kit includes two front and two rear mounting brackets and all hardware required
- Includes holes spaced 1" apart c/c for easy adjustment of shelves
- 34"H brackets are used with 39"H posts or doors
- Two brackets can be stacked if a shelf is installed between them, [see page 137](#)
- To order non-standard mounting bracket heights, please contact Customer Service

PRODUCT NO.	HEIGHT
RE30-18	18"
RE30-24	24"
RE30-30	30"
RE30-34	34"
RE30-36	36"
RE30-46	46"
RE30-48	48"



FILLER RE90



- Installs under the bank of drawers with an adhesive strip
- Fulfills aesthetic requirements of certain work environments (hospitals, offices, etc.)
- Compatible with Rousseau Spider® and Spacesaver shelving only
- For Spacesaver shelving, order RE90-WW02 instead of RE90-WW01

PRODUCT NO.	W × H
RE90-3001	30" × 5/8"
RE90-3601	36" × 5/8"
RE90-4201	42" × 5/8"
RE90-4801	48" × 5/8"

HEAVY-DUTY MODULAR DRAWER RF32 / RF36



- Painted steel drawer: RF32
- Drawer with stainless steel front and light gray 071 painted steel interior: RF36
- 400lb. load capacity, 100% extension
- Heavy-duty construction
- Easy to install
- Vast choice of accessories available to customize the drawer to your storage needs, [see pages 294-298](#)
- Drawer heights available: 03", 04", 05", 06", 08", 09", 10", 12" and 14"
- To order: Add the drawer height to the product number and specify the type of drawer front required (painted steel or stainless steel), e.g., RF32-362406
- For preconfigured modular drawers with compartments, [see pages 276-293](#);

PRODUCT NO.	W × D
RF_-3018_	30" × 18"
RF_-3024_	30" × 24"
RF_-3618_	36" × 18"
RF_-3624_	36" × 24"
RF_-4218_	42" × 18"
RF_-4224_	42" × 24"
RF_-4818_	48" × 18"
RF_-4824_	48" × 24"

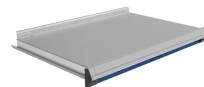
HEAVY-DUTY FRONT ACCESS ROLL-OUT SHELF RF41



- 400lb capacity, 100% extension;
- Heavy-duty construction;
- Easy to install;
- Painted steel with 3" edges on sides and back;
- Height: 6";
- Full access to contents;
- Complete the product number by choosing the desired width: 30", 36", 42" or 48"

PRODUCT NO.	DEPTH
RF41-_18	18"
RF41-_24	24"

HEAVY-DUTY 3-SIDED ACCESS ROLL-OUT SHELF RF45



- 400lb. load capacity, 100% extension
- Heavy-duty construction
- Easy to install
- Galvanized steel with 1½"H edge on the back
- Total height: 5"
- Full access to contents
- To order: Complete the product number with the width required: 30", 36", 42" or 48"

PRODUCT NO.	DEPTH
RF45-_18	18"
RF45-_24	24"

LOCKING AND SECURITY MECHANISMS

VERTICAL SECURITY BAR

RE80



- Locks all drawers in a shelving unit with a key or padlock
- The key or safety hasp is located at the top of the bar to facilitate access
- Covers a bank of drawers from 18"H to 48"H
- Quick and easy hook-on assembly
- More than one bar on the same mounting bracket can be installed (for different users)
- Installs on the right-hand side
- The 36"H bar is compatible with the 34"H mounting bracket, and the 48"H bar is compatible with the 46"H mounting bracket
- Compatible with Rousseau Spider® shelving only. For Spacesaver shelving, order RE81-HHL3A instead of RE80-HHL301
- To order: Specify the type of lock required, for a key lock, add L3 to the product number; for a safety hasp, add LP to the product number

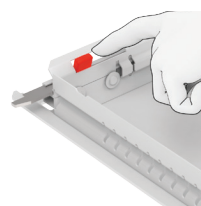


352-353

PRODUCT NO.	HEIGHT
RE80-18__A	18"
RE80-24__A	24"
RE80-30__A	30"
RE80-36__A	36"
RE80-48__A	48"

LOCK-OUT MECHANISM

RF85

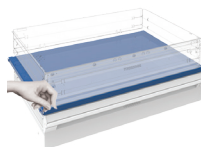


- For both drawers and roll-out shelves
- Locks drawers and roll-out shelves in an open position
- Activated manually, only when required
- Compatible with all drawer accessories
- Plastic bins in the back row may make it more difficult to activate the mechanism

PRODUCT NO.
RF85

SECURITY PANEL

RF91



- Blocks access between two drawers or two banks of drawers
- Usable space in the bank of drawers is reduced by 1"
- Installs between two drawers
- To order: Complete the product number with the width required: 30", 36", 42" or 48"

PRODUCT NO.	DEPTH
RF91-__18	18"
RF91-__24	24"

INTEGRATED LOCK-IN MECHANISM

A



- Automatically activated when lifting the handle up
- The drawer or roll-out shelf can be opened with one hand only
- Closes with a simple push
- Stops drawer or roll-out shelf from opening on their own
- Easy to retrofit
- To order: Add A to the product number for the drawer, preconfigured compartment layout or roll-out shelf, e.g., RF32-362406A
- For replacement parts or to retrofit this mechanism, order an RY08-WWA

PRODUCT NO.
<u>A</u>

ECONO LOCK-IN MECHANISM

B



- Automatically activated when lifting the handle up
- The drawer or roll-out shelf can be opened with one hand only
- Closes with a simple push
- Stops drawer or roll-out shelf from opening on their own
- Easy to retrofit
- To order: Add B to the product number for the drawer, preconfigured compartment layout or roll-out shelf, e.g., RF32-362406B
- For replacement parts or to retrofit this mechanism, order an RY01-B

PRODUCT NO.
<u>B</u>

DRAWER LOCK

L3



- Compatible with all drawer dimensions
- Does not reduce the drawer's storage space
- Easy to retrofit
- To order: Add L3 to the product number for the drawer or preconfigured compartment layout, e.g., RF32-362406L3
- For replacement parts or to retrofit this mechanism, see page 352



352

PRODUCT NO.
<u>L3</u>

COMPONENTS

STRUCTURAL COMPONENTS

POST

SR10 / SH10



SH SR

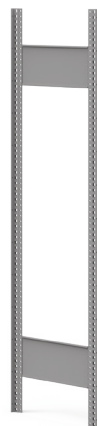
- Tubular T shape provides up to seven fixing zones
- Includes perforations spaced 1" apart c/c on each side for easy adjustment of shelves
- 14ga steel
- Options:
 - SR10 universal post with perforated front surface for adding Mini-Racking or multi-level shelving
 - SH10 shelving post with smooth front surface for a neater finish

SR UNIVERSAL POST	SH SHELVING POST	HEIGHT
SR10-039	SH10-039	39"
SR10-051	SH10-051	51"
SR10-075	SH10-075	75"
SR10-087	SH10-087	87"
SR10-099	SH10-099	99"
SR10-111	SH10-111	111"
SR10-123	SH10-123	123"

NOTES: Other sizes are available. Contact your customer service representative for more information.

WELDED OPEN UPRIGHT

SR11 / SH11



- Upright with factory-welded side braces
- Enables faster assembly
- To order: Complete the product number with the depth required: 12", 15", 18" or 24"

SR UNIVERSAL POST	SH SHELVING POST	HEIGHT
SR11-__0752	SH11-__0752	75"
SR11-__0872	SH11-__0872	87"
SR11-__0992	SH11-__0992	99"

NOTE: Other sizes are available. Contact your customer service representative for more information.

WELDED CLOSED UPRIGHT

SR12 / SH12



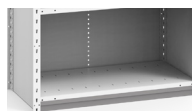
- Upright with full-height factory-welded panel
- Enables faster assembly
- To order: Complete the product number with the depth required: 12", 15", 18" or 24"

SR UNIVERSAL POST	SH SHELVING POST	HEIGHT
SR12-__075	SH12-__075	75"
SR12-__087	SH12-__087	87"
SR12-__099	SH12-__099	99"

NOTE: Other sizes are available. Contact your customer service representative for more information.

SHELF FRONT OR FRONT BASE

SH28



- Same component used for both applications
- Quick and easy hook-on installation
- To order: Complete the product number with the width required: 30", 36", 42" or 48"

PRODUCT NO.	HEIGHT
SH28-__02	2"
SH28-__05	5"

NOTE: The 2" front base is always included with closed shelving preconfigured models.

SIDE PANEL

SH30

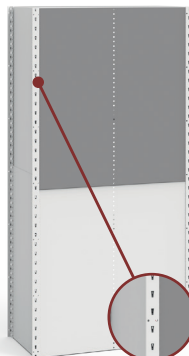


- Panel combinations:
 - 75"H posts (39"H + 39"H)
 - 87"H posts (39"H + 51"H)
 - 99"H posts (51"H + 51"H)
 - 111"H posts (39"H + 39"H + 39"H)
 - 123"H posts (39"H + 39"H + 51"H)
- To order: Complete the product number with the depth required: 12", 15", 18" or 24"

PRODUCT NO.	HEIGHT
SH30-__39	39"
SH30-__51	51"

BACK PANEL

SH31



- Panel combinations:
 - 75"H posts (39"H + 39"H)
 - 87"H posts (39"H + 51"H)
 - 99"H posts (51"H + 51"H)
 - 111"H posts (39"H + 39"H + 39"H)
 - 123"H posts (39"H + 39"H + 51"H)
- To order: Complete the product number with the width required: 30", 36", 42" or 48"

PRODUCT NO.	HEIGHT
SH31-__39	39"
SH31-__51	51"

BACK SWAY BRACE

SH33



- X-shaped factory-assembled brace
- Easy to install
- Recommendations:
 - For 99"H uprights and shorter: one brace
 - For uprights higher than 99": two braces, please refer to technical guide S58 or contact your customer service representative for exact placement of the brace

PRODUCT NO.	WIDTH
SH33-30	30"
SH33-36	36"
SH33-42	42"
SH33-48	48"

SIDE BRACES

SH34



- Sold in pairs
- Enables uprights to be attached in a "ladder" for easier assembly
- Recommendations:
 - For 99"H uprights or shorter: one pair of side braces
 - For uprights higher than 99"H: please refer to technical guide S58 or contact your customer service representative

PRODUCT NO.	DEPTH
SH34-12	12"
SH34-15	15"
SH34-18	18"
SH34-24	24"
SH34-30	30"

CORNER GUSSETS

SH35



- Replaces a back sway brace to provide full access to the front and rear of the shelving
- 14ga steel
- Each kit includes four gussets. Minimum of three kits required per shelving unit

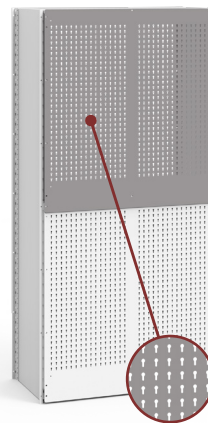
PRODUCT NO.
SH35

NOTE: Not to be used for shelving over 99"H, multi-level shelving or SHC2 double shelf reinforcements.

STRUCTURAL BACK UTILITY PANEL



SH79

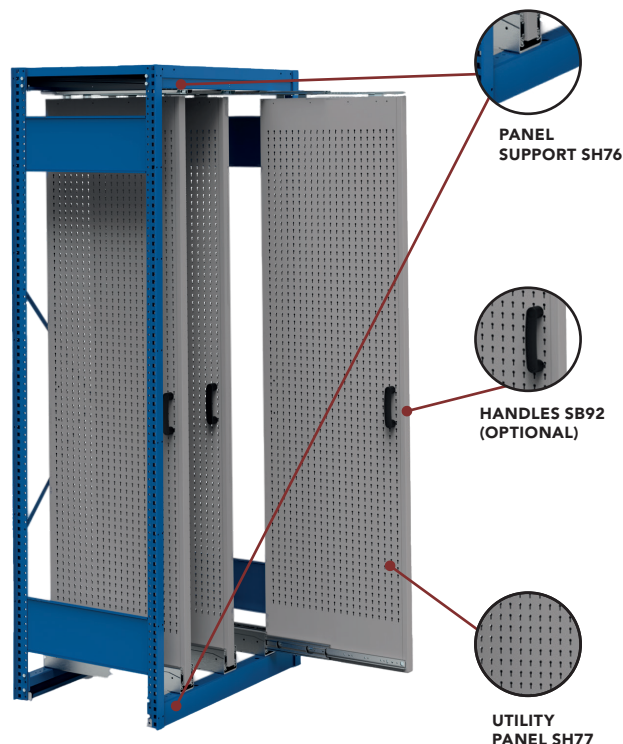


- Utility panel for the backs of shelving
- Forms an integral part of the shelving structure
- Holes spaced 1" apart c/c
- Load capacity: maximum 250lb. per panel
- Compatible with: WM9F, WM9G, WM9H, WM9J and WM9L light-duty hooks; WM9A and WM9B heavy-duty hooks, [see page 262](#)
- Compatible with: WM9C rails; WM9D, WM9M, WM9N, WM9Q, WM9P, WM9R and WM9S holders; EA50 mounts; EA52 holders; EA28 and WM21 shelves, [see pages 262-263](#)
- Panel combinations:
 - 75"H posts (39"H + 39"H)
 - 87"H posts (39"H + 51"H)
 - 99"H posts (51"H + 51"H)
- To order: Complete the product number with the width required: 30", 36", 42" or 48"

PRODUCT NO.	HEIGHT
SH79-__39	39"
SH79-__51	51"

NOTE: Used without SH31 back panels.





- For storing a wide range of items: tools, straps, cables, pipes, gaskets, etc.
- Compatible with Spider® shelving, both open and closed
- Refer to technical guide S84 for spacing between panels
- SB92 handles available as an optional add-on
- Panel:
 - Available heights: 63", 75" and 87"; depths: 18" and 24"
 - Holes spaced 1" apart c/c
 - Width adjustable in 1" increments c/c
 - Load capacity: 300lb. per panel (weight evenly distributed)
- Compatible with: WM9F, WM9G, WM9H, WM9J and WM9L light-duty hooks; WM9A and WM9B heavy-duty hooks, [see page 262](#)
- Compatible with: WM9C rails; WM9D, WM9M, WM9N, WM9Q, WM9P, WM9R and WM9S holders; EA50 mounts; EA52 holders; EA28 and WM21 shelves, [see pages 262-263](#)
- Support:
 - Available widths: 30", 36", 42" and 48"
 - One support kit per shelving
 - The bottom beam also serves as a kick plate
 - To order: Specify the width of the support required

PRODUCT NO.	D×H	NO. OF HOLES
SH77-1863	18"×63"	15
SH77-2463	24"×63"	21
SH77-1875	18"×75"	15
SH77-2475	24"×75"	21
SH77-1887	18"×87"	15
SH77-2487	24"×87"	21
SH76-__	Panel support	
SB92-01	Handles	



The panel support must be anchored to the ground to ensure stability (anchoring kit included).

NOTES: If the shelving unit is used on its own, the sliding panels must be the same height as the shelving.
If the shelving with sliding panels is used in combination with two shelving units, you can put storage shelves above the panels.

INSTALLATION ACCESSORIES

FLOOR ANCHOR PLATE

SH45



- Sold individually
- Attaches to the post for anchoring shelving sections to the ground. Distributes the load over a larger surface and protects the floor
- 12ga galvanized steel

PRODUCT NO.
SH45

SHIM PLATE

SH46



- Sold individually
- Levels shelving units on uneven surfaces
- Slides under SH45 floor anchor plates
- 12ga or 16ga galvanized steel

PRODUCT NO.	THICKNESS
SH46-12	12 gauge (0.100")
SH46-16	16 gauge (0.060")

LEVELING GLIDE KIT

SR49



- Sold in pairs
- Adjusts the height of Spider® Shelving units from 1¼" to 2½" on uneven surfaces
- Load capacity: maximum 750lb. per glide
- Restrictions:
 - Only compatible with 99"H shelving or shorter
 - Only compatible with SR uprights and posts
 - Not compatible with RF32/RF36 modular drawers, RF41/RF45 roll-out shelves, sliding panels SH77 and SH28 bases

PRODUCT NO.
SR49-01

FLOOR ANCHORING HARDWARE

SH47



- Anchors shelving to the ground
- Includes four bolts for concrete floors

PRODUCT NO.
SH47-04

WALL SPACER

SR47



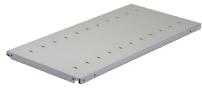
- Anchors shelving to the wall
- Adjusts from 3" to 4"
- Wall anchoring hardware not included (holes are ⅝" dia.)

PRODUCT NO.
SR47-0304

SHELVES AND SHELF ACCESSORIES

BOX SHELF

SH20



SH60

- Box-type shelf with front and rear edges roll-formed and welded
- 20 gauge steel, 1¼" thick
- 4 sturdy and compact SH60 clips included
- Perforations for dividers (SH52) at every 3"c/c

PRODUCT NO.	W × D	PRODUCT NO.	W × D
SH20-3012	30" × 12"	SH20-4212	42" × 12"
SH20-3015	30" × 15"	SH20-4215	42" × 15"
SH20-3018	30" × 18"	SH20-4218	42" × 18"
SH20-3024	30" × 24"	SH20-4224	42" × 24"
SH20-3612	36" × 12"	SH20-4812	48" × 12"
SH20-3615	36" × 15"	SH20-4815	48" × 15"
SH20-3618	36" × 18"	SH20-4818	48" × 18"
SH20-3624	36" × 24"	SH20-4824	48" × 24"

NOTE: Other sizes are available. Contact your Customer Service representative for more information.

SHELF LOAD CAPACITY

Shelving load capacity tests are based on ANSI MH28.1-2024a Shelving Manufacturer Association (SMA) standards.

These load capacities include a safety factor and are valid for an evenly distributed load. The capacities specified are in pounds.

NOTE: SH22, SH24 and SHC reinforcements are not factory installed on SH20 BOX shelves.

DIMENSIONS W × D	MEDIUM-DUTY CAPACITY WITHOUT REINFORCEMENT	H-D CAPACITY CENTRAL REINFORCEMENT (SHC1)	EXTRA H-D- CAPACITY DOUBLE REINFORCEMENT (SHC2)
30" × 12"	900	1100	1100
30" × 15"	925	1100	1100
30" × 18"	745	1100	1100
30" × 24"	495	1100	1100
36" × 12"	775	1100	1100
36" × 15"	775	1100	1100
36" × 18"	765	1100	1100
36" × 24"	525	1100	1100
42" × 12"	570	850	985
42" × 15"	625	850	1000
42" × 18"	645	895	1000
42" × 24"	675	930	1050
48" × 12"	455	650	650
48" × 15"	450	695	695
48" × 18"	480	710	710
48" × 24"	480	755	755

CENTER SHELF REINFORCEMENT (HEAVY-DUTY) SHC1



- One SH24 front reinforcement combined with two SH22 side reinforcements
- Galvanized steel

PRODUCT NO.	W × D
SHC1009	30" × 18"
SHC1010	30" × 24"
SHC1003	36" × 18"
SHC1004	36" × 24"
SHC1007	42" × 18"
SHC1008	42" × 24"
SHC1005	48" × 18"
SHC1006	48" × 24"

DOUBLE SHELF REINFORCEMENT (EXTRA HEAVY-DUTY) SHC2

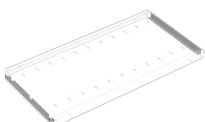


- Combination of two front reinforcements SH24 with two side reinforcements SH22;
- Galvanized steel.

PRODUCT NO.	W × D
SHC2009	30" × 18"
SHC2010	30" × 24"
SHC2003	36" × 18"
SHC2004	36" × 24"
SHC2007	42" × 18"
SHC2008	42" × 24"
SHC2005	48" × 18"
SHC2006	48" × 24"

NOTE: Required when the shelves need to support higher loads, concentrated loads or when aesthetics are important.

SIDE SHELF REINFORCEMENTS SH22



- Two L-shaped reinforcements that attach on each side of the shelf
- These side reinforcements increase the load capacity of 36"W × 24"D shelves to 800lb.
- Galvanized steel

PRODUCT NO.	DEPTH
SH22-18	18"
SH22-24	24"

FRONT SHELF REINFORCEMENT SH24



- C-shaped reinforcement
- Required when the shelves need to support loads concentrated at the front
- Galvanized steel

PRODUCT NO.	WIDTH
SH24-30	30"
SH24-36	36"
SH24-42	42"
SH24-48	48"

NOTE: This reinforcement increases rigidity, not load capacity.