

R HEAVY-DUTY MODULAR CABINET



INDEX	PAGE(S)
R Heavy-Duty	
Modular Cabinet	4 - 5
Preconfigured Models	6 - 9
Accessories	10 - 18
Components	19 - 25
L Compact Cabinet	26
Preconfigured Models	
- Cabinets	27 - 28
- Drawer compartments	29 - 30
Accessories	31 - 35
Components	36 - 37

R HEAVY-DUTY MODULAR CABINET

Specially designed for intensive use, R Heavy-Duty Stationary Cabinets are the ideal solution for the diverse needs of our customers. They are market-leading products thanks to the wide range of dimensions and accessories available, their modular design and, above all, their durability.

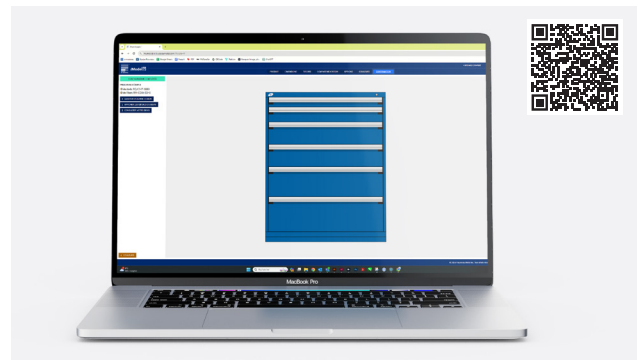
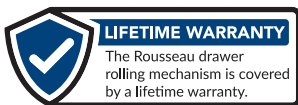
Each of the 7 widths come in different depths for a total of 15 different work surface sizes. Each of these is available in 7 heights. And with 10 different drawer heights, you have an incredible choice of possible configurations to suit the intended purpose of the cabinet.

Rousseau's R cabinet was tested by an independent laboratory and proved to be the most durable on the market. The tests also showed the superiority of our drawers. This is why we proudly and confidently offer a lifetime warranty on the drawer rolling system.

The unique design of the R drawer is a trademark of Rousseau Metal Inc.

As well as being built for the toughest tasks, Rousseau cabinets boast stylish and distinctive aesthetics that stand the test of time: a timeless design, designed to last.

CUSTOMIZE YOUR R HEAVY-DUTY MODULAR CABINET WITH THE MYMODEL-R ONLINE CONFIGURATOR



R HEAVY-DUTY MODULAR CABINET

THE ROUSSEAU DIFFERENCE



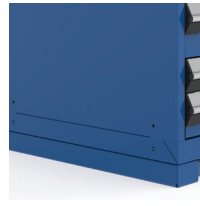
A robust and distinctive design that is ideal for all environments.



10 drawer heights and 7 door heights available.



True North American dimensions allow for perfect modularity.



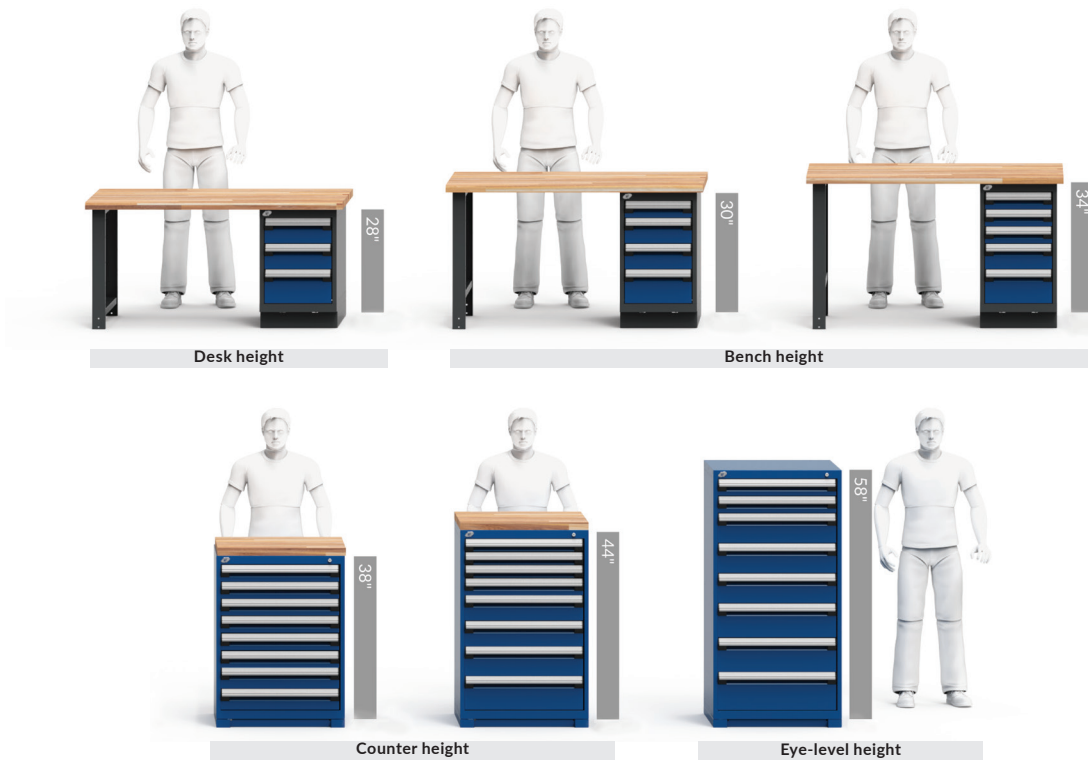
The housings have predefined fixing zones for installation of add-ons such as work surfaces, shelves, etc.



Industry-leading 400lb. load capacity per drawer.

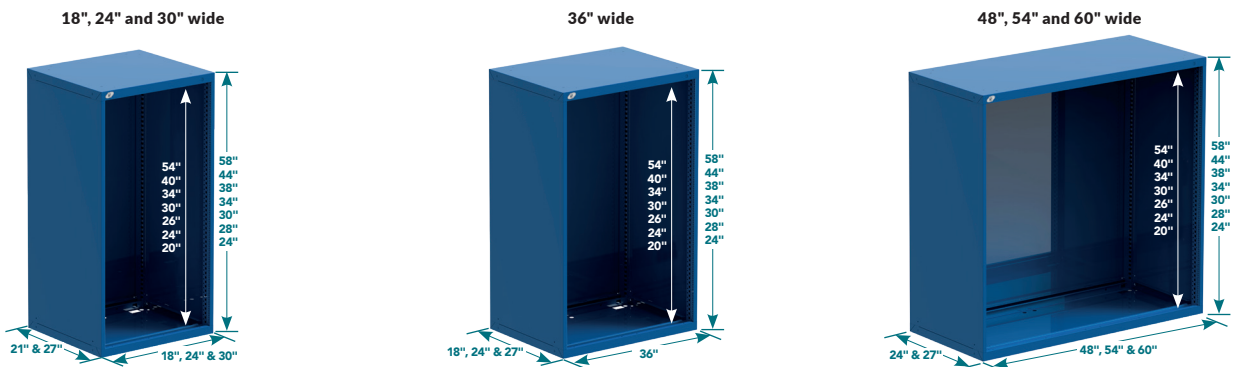
GENERAL DIMENSIONS

HEIGHTS AVAILABLE




NOTE: The height specified excludes the base.

WIDTH × DEPTH × HEIGHT



PRECONFIGURED MODELS

HERE ARE SOME OF OUR MOST POPULAR PRECONFIGURED MODELS OF THE R HEAVY-DUTY STATIONARY CABINETS

- The preconfigured models in this section include a 2"H front-access forklift base and a key lock on the cabinet housing (models with more than one drawer) and on the door
- The doors are factory installed with hinges on the right-hand side. They can be installed on the left upon request  352-356
- To add a LP safety hasp, an L50 digital lock or an L100 smart lock to a door or to your R cabinet, [see page 11](#)

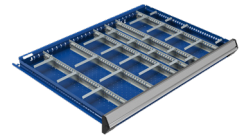
NOTE: For interior drawer dimensions, [see pages 272-275](#).

IMPORTANT

Drawer compartments are included in all models. See the number of compartments and suggested layouts below.

For drawers without compartments, replace the last two digits of the model number with the next even number up

e.g., R5ACD-2801 with R5ACD-2802 without



NUMBER OF COMPARTMENTS (LAYOUT CODE)

DRAWER DIMENSIONS	3"H TO 5"H	6"H TO 8"H	9"H AND HIGHER
24"W x 21"D	12 (0308)	9 (0206)	4 (0102)
24"W x 27"D	20 (0316)	12 (0209)	6 (0104)
30"W x 21"D	24 (0518)	12 (0308)	6 (0203)
30"W x 27"D	25 (0420)	12 (0308)	9 (0206)
36"W x 18"D	24 (0518)	8 (0304)	6 (0203)
36"W x 24"D	30 (0524)	12 (0308)	9 (0206)
48"W x 24"D	40 (0732)	15 (0410)	8 (0304)
48"W x 27"D	32 (0724)	15 (0410)	8 (0304)
54"W x 24"D	40 (0930)	18 (0512)	10 (0405)
54"W x 27"D	40 (0930)	18 (0512)	10 (0405)
60"W x 24"D	70 (1356)	24 (0716)	12 (0308)
60"W x 27"D	84 (1370)	21 (0614)	12 (0308)

24" WIDE (W x D x H)



4 DRAWERS
R5ACD-2801 24" x 21" x 30"
R5ACG-2801 24" x 27" x 30"



4 DRAWERS
R5ACD-3005 24" x 21" x 32"
R5ACG-3005 24" x 27" x 32"



1 DOOR / 2 SHELVES
R5ACD-3009 24" x 21" x 32"
R5ACG-3009 24" x 27" x 32"



3 DRAWERS
R5ACD-3405 24" x 21" x 36"
R5ACG-3405 24" x 27" x 36"



5 DRAWERS
R5ACD-3807 24" x 21" x 40"
R5ACG-3807 24" x 27" x 40"

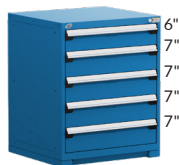
30" WIDE (W x D x H)



5 DRAWERS
R5ADD-3003 30" x 21" x 32"
R5ADG-3003 30" x 27" x 32"



1 DRAWER / 1 DOOR / 1 SHELF
R5ADD-3009 30" x 21" x 40"
R5ADG-3009 30" x 27" x 40"



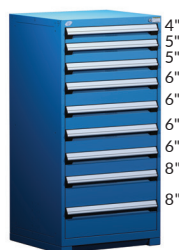
5 DRAWERS
R5ADD-3815 30" x 21" x 40"
R5ADG-3815 30" x 27" x 40"



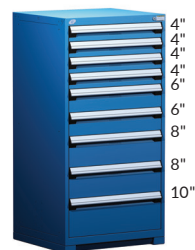
8 DRAWERS
R5ADD-4401 30" x 21" x 46"
R5ADG-4401 30" x 27" x 46"



5 DRAWERS
R5ADD-4411 30" x 21" x 46"
R5ADG-4411 30" x 27" x 46"



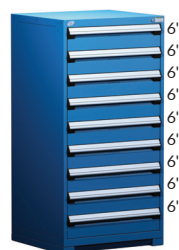
9 DRAWERS
R5ADD-5805 30" x 21" x 60"
R5ADG-5805 30" x 27" x 60"



9 DRAWERS
R5ADD-5809 30" x 21" x 60"
R5ADG-5809 30" x 27" x 60"



6 DRAWERS
R5ADD-5843 30" x 21" x 60"
R5ADG-5843 30" x 27" x 60"



9 DRAWERS
R5ADD-5813 30" x 21" x 60"
R5ADG-5813 30" x 27" x 60"



1 DOOR / 1 SHELF / 5 DRAWERS
R5ADD-5845 30" x 21" x 60"
R5ADG-5845 30" x 27" x 60"

PRECONFIGURED MODELS

36" WIDE (W x D x H)



4 DRAWERS
R5AEC-2801 36" x 18" x 30"
R5AEE-2801 36" x 24" x 30"



5 DRAWERS
R5AEC-3005 36" x 18" x 32"
R5AEE-3005 36" x 24" x 32"



2 DRAWERS
R5AEC-3021 36" x 18" x 32"
R5AEE-3021 36" x 24" x 32"



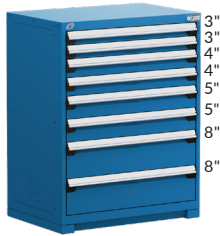
5 DRAWERS
R5AEC-3805 36" x 18" x 40"
R5AEE-3805 36" x 24" x 40"



5 DRAWERS
R5AEC-3807 36" x 18" x 40"
R5AEE-3807 36" x 24" x 40"



1 DOUBLE DOOR/
2 SHELVES
R5AEC-4412 36" x 18" x 46"
R5AEE-4412 36" x 24" x 46"



8 DRAWERS
R5AEC-4415 36" x 18" x 46"
R5AEE-4415 36" x 24" x 46"



9 DRAWERS
R5AEC-5813 36" x 18" x 60"
R5AEE-5813 36" x 24" x 60"



6 DRAWERS
R5AEC-5859 36" x 18" x 60"
R5AEE-5859 36" x 24" x 60"



8 DRAWERS
R5AEC-5825 36" x 18" x 60"
R5AEE-5825 36" x 24" x 60"

48" WIDE (W x D x H)



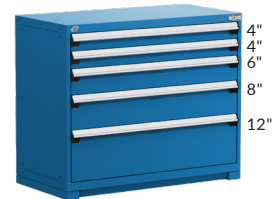
5 DRAWERS
R5AHE-3003 48" x 24" x 32"
R5AHG-3003 48" x 27" x 32"



7 DRAWERS
R5AHE-3801 48" x 24" x 40"
R5AHG-3801 48" x 27" x 40"



1 SLIDING DOOR/
2 SHELVES
R5AHE-3803 48" x 24" x 40"
R5AHG-3803 48" x 27" x 40"



5 DRAWERS
R5AHE-3807 48" x 24" x 40"
R5AHG-3807 48" x 27" x 40"



9 DRAWERS
R5AHE-4405 48" x 24" x 46"
R5AHG-4405 48" x 27" x 46"



7 DRAWERS
R5AHE-4407 48" x 24" x 46"
R5AHG-4407 48" x 27" x 46"



1 DOUBLE DOOR/
2 SHELVES
R5AHE-4414 48" x 24" x 46"
R5AHG-4414 48" x 27" x 46"



5 DRAWERS
R5AHE-4427 48" x 24" x 46"
R5AHG-4427 48" x 27" x 46"

PRECONFIGURED MODELS



15 DRAWERS		
R5AHE-5805	48" x 24" x 60"	
R5AHG-5805	48" x 27" x 60"	



6 DRAWERS		
R5AHE-5807	48" x 24" x 60"	
R5AHG-5807	48" x 27" x 60"	

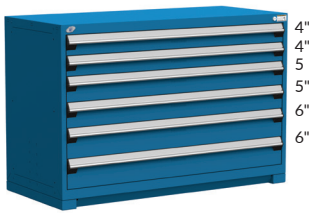


8 DRAWERS		
R5AHE-5809	48" x 24" x 60"	
R5AHG-5809	48" x 27" x 60"	

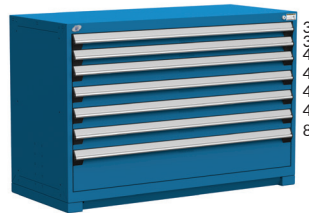


9 DRAWERS		
R5AHE-5813	48" x 24" x 60"	
R5AHG-5813	48" x 27" x 60"	

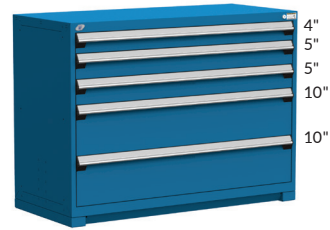
54" WIDE (W x D x H)



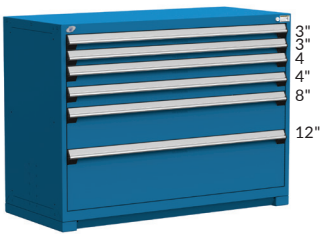
6 DRAWERS		
R5AJE-3401	54" x 24" x 36"	
R5AJG-3401	54" x 27" x 36"	



7 DRAWERS		
R5AJE-3403	54" x 24" x 36"	
R5AJG-3403	54" x 27" x 36"	



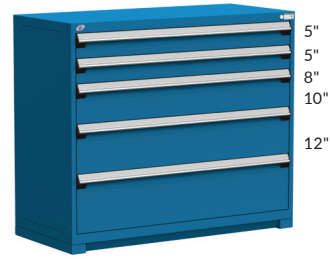
5 DRAWERS		
R5AJE-3801	54" x 24" x 40"	
R5AJG-3801	54" x 27" x 40"	



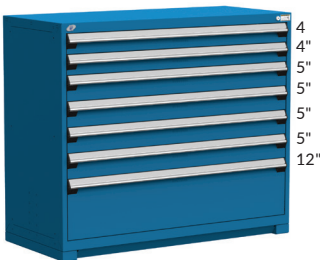
6 DRAWERS		
R5AJE-3803	54" x 24" x 40"	
R5AJG-3803	54" x 27" x 40"	



5 DRAWERS / 1 ROLL-OUT SHELF		
R5AJE-4401	54" x 24" x 46"	
R5AJG-4401	54" x 27" x 46"	



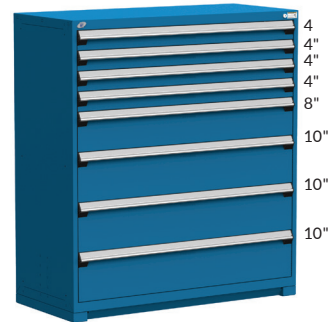
5 DRAWERS		
R5AJE-4405	54" x 24" x 46"	
R5AJG-4405	54" x 27" x 46"	



7 DRAWERS		
R5AJE-4403	54" x 24" x 46"	
R5AJG-4403	54" x 27" x 46"	

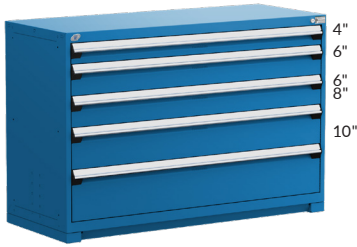


1 DOUBLE DOOR / 4 SHELVES		
R5AJE-5802	54" x 24" x 60"	
R5AJG-5802	54" x 27" x 60"	

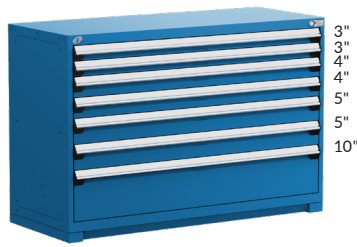


8 DRAWERS		
R5AJE-5803	54" x 24" x 60"	
R5AJG-5803	54" x 27" x 60"	

60" WIDE (W x D x H)



5 DRAWERS		
R5AKE-3805	60" x 24" x 40"	
R5AKG-3805	60" x 27" x 40"	



7 DRAWERS		
R5AKE-3807	60" x 24" x 40"	
R5AKG-3807	60" x 27" x 40"	



6 DRAWERS		
R5AKE-4401	60" x 24" x 46"	
R5AKG-4401	60" x 27" x 46"	



1 SLIDING DOOR / 3 SHELVES		
R5AKE-4406	60" x 24" x 46"	
R5AKG-4406	60" x 27" x 46"	



5 DRAWERS / 1 ROLL-OUT SHELF		
R5AKE-5801	60" x 24" x 60"	
R5AKG-5801	60" x 27" x 60"	



9 DRAWERS		
R5AKE-5803	60" x 24" x 60"	
R5AKG-5803	60" x 27" x 60"	



SECURITY ACCESSORIES AND RECOMMENDATIONS

VERTICAL SECURITY BAR

RB10



- Locks all drawers in a cabinet with a padlock on the right (A) or left (B)
- Safety hasp is located at the top of the bar to facilitate access
- Covers a bank of drawers from 20"H to 54"H
- More than one bar on the same cabinet can be installed (for different users)
- To order: Specify the type of lock required, LP for a safety hasp or L3 for a key lock and which side the bar is to be installed on, e.g., RB10-20LPA for a safety hasp and the right-hand side

PRODUCT NO.	HEIGHT
RB10-20__	20"
RB10-24__	24"
RB10-26__	26"
RB10-30__	30"
RB10-34__	34"
RB10-40__	40"
RB10-54__	54"

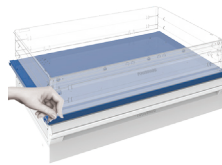


352-353

NOTE: Vertical security bar A is not compatible with a drawer lock

SECURITY PANEL

RF91



- Blocks access between two drawers with locks
- Usable space in the cabinet is reduced by 1"
- Installs between two drawers
- Divides the cabinet up for use by more than one user
- To order: Specify the width and depth required, e.g., RF91-3624 for a 36"W x 24"D panel

PRODUCT NO. _____
RF91-____

TRUE ONE-DRAWER-AT-A-TIME SYSTEM

RB15



- Prevents multiple drawers from opening at the same time, which ensures the cabinet's stability and users' safety
- To order: Add A to the cabinet product number, e.g., RA30-302758A
- To retrofit this mechanism, order an RB15 and specify the number of drawers and roll-out shelves in the cabinet, e.g., RB15-58-07 for a cabinet with seven drawers
- One kit per cabinet



PRODUCT NO.	CABINET HEIGHT
RB15-28-__	28"
RB15-30-__	30"
RB15-34-__	34"
RB15-38-__	38"
RB15-44-__	44"
RB15-58-__	58"



KEY LOCK FOR CABINET

L3



352

- Locks all drawers and roll-out shelves in the cabinet at the same time
- Drawer and roll-out shelf positions can be reconfigured
- Easy to retrofit
- To order: Add L3 to the cabinet product number, e.g., RA30-302758L3
- For replacement parts or to retrofit, see [page 352](#)

PRODUCT NO.

L3

CABINET SAFETY HASP

LP



353

- Locks all drawers and roll-out shelves in the cabinet at the same time
- Drawer and roll-out shelf positions can be reconfigured
- An alternative to an RB10 Vertical Security Bar
- Easy to retrofit
- To order: Add LP to the cabinet product number, e.g., RA30-302758LP
- For replacement parts or to retrofit, see [page 353](#)

PRODUCT NO.

LP

DIGITAL LOCK FOR CABINET

L50



354

- Locks all drawers and roll-out shelves in the cabinet at the same time
- No key required
- Up to 20 different users can be programmed
- 4- to 8-digit access codes
- Simplifies access management to drawers
- To order: Add L50 to the housing product number, e.g., RA30-302758L50
- For replacement parts or to retrofit, see [page 354](#)

PRODUCT NO.

L50

SMART LOCK FOR CABINET

L100



355

- Handy unlocking via a transponder or smartphone
- Locks all drawers and roll-out shelves in the cabinet at the same time
- User-friendly and intuitive
- No key required
- Easy and comprehensive management
- To order: Add L100 to the housing product number, e.g., RA30-302758L100
- For replacement parts or to retrofit, see [page 356](#)

PRODUCT NO.

L100

NOTE: NFC transponders are not included with the lock, they must be ordered separately (pack of 5). See [page 356](#).

DIGITAL LOCK FOR DOORS

L50



354

- Electronically locks a cabinet door
- No key required
- Up to 20 different users can be programmed
- 4- to 8-digit access codes
- Compatible with single, double and polycarbonate swing doors, with or without frame (RB61, RB62 RB43, RB67, RB66, RB49, RB75, RB76 and RB79)
- To order: Add L50 to the door product code, e.g. RB61-3620L50
- For replacement parts or to retrofit, see [page 354](#)

PRODUCT NO.

L50

SMART LOCK FOR DOORS

L100



355

- Handy unlocking via a transponder or smartphone
- User-friendly and intuitive
- No key required
- Easy and comprehensive management
- Compatible with single, double and polycarbonate swing doors, with or without frame (RB61, RB62 RB43, RB67, RB66, RB49, RB75, RB76 and RB79)
- To order: Add L100 to the door product code, e.g. RB61-3620L100
- For replacement parts or to retrofit, see [page 356](#)

PRODUCT NO.

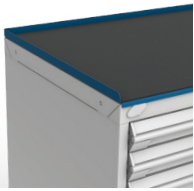
L100

NOTE: NFC transponders are not included with the lock, they must be ordered separately (pack of 5). See [page 356](#).

CABINET TOPS

STEEL TOP WITH RUBBER MAT

RC32



- ½"-thick non-slip neoprene surface
- Includes edges on the sides and back
- Height: 1"

LAMINATED HARDWOOD TOP

WS14



- Top for general industrial applications
- Made from varnished hardwood slats
- Includes a 90° radius front edge for extra comfort
- High impact resistance
- Attractive appearance
- Thickness: 1¾"

STAINLESS STEEL TOP

RC35



- 16ga stainless steel: RC35-WWDD
- 12ga stainless steel: RC35-WWDD-12
- Acts as a work surface and protects the cabinet from impacts
- Particle board top with stainless steel cover (#4 brushed finish)
- Excellent corrosion and chemical resistance
- Top complies with CARB regulations on formaldehyde emissions
- Includes welded corners for an attractive appearance
- Thickness: 1¾"
- To order a 12ga stainless steel top, add 12 to the product number

MARINE EDGE STAINLESS STEEL TOP

RC35



- Marine edge 16ga stainless steel: RC35-WWDD-16M
- Marine edge 12ga stainless steel: RC35-WWDD-12M
- Prevents small objects or liquids from falling or spilling from the work surface
- Acts as a work surface and protects the cabinet from impacts
- Particle board top with stainless steel cover (#4 brushed finish)
- Excellent corrosion and chemical resistance
- Top complies with CARB regulations on formaldehyde emissions
- Includes welded corners for an attractive appearance
- Thickness: 1¾"
- To order: Specify the steel gauge required, e.g., RC35-WWDD-16M for a marine edge 16ga stainless steel top

PAINTED STEEL TOP

RC37



- Acts as a work surface and protects the cabinet from impacts
- Particle board top with painted steel cover
- Top complies with CARB regulations on formaldehyde emissions
- Includes welded corners for an attractive appearance
- Thickness: 1¾"

DISSIPATIVE TOP



WS17



- Top for electronics tasks. Ideal for electronics inspection or assembly stations
- Featuring softened edges, with ⅛" PVC edge banding around the entire perimeter for a clean and durable finish
- Color: white
- Attractive appearance
- Easy to clean
- Dissipates electrical charges that can damage electronic components
- The resistance point to point and point to ground is between 10⁶ and 10⁹ Ω
- In accordance with the standard ESD-S4 1-1997
- Thickness: 1½"

NOTE: Grounding accessories are sold separately, [see pages 16-17](#).

RESISTANT ACRYLIC / PVC LAMINATE TOP



WS08



- Ideal for assembly stations or for applications using solvents, oils or other chemical products
- Featuring softened edges, with 1/8" PVC edge banding around the entire perimeter for a clean and durable finish
- Color: gray
- Particle board core
- Finish: sheet of gray polymer
- Premium-quality laminate top
- Excellent chemical resistance (can be in prolonged contact with a substance)
- Superior abrasion resistance compared with standard laminate tops
- Superior impact resistance compared with standard laminate tops
- Attractive appearance
- Thickness: 1 1/2"

PLASTIC LAMINATED TOP



WS16



- Top for general use. Ideal for assembly stations, quality control and packaging
- Featuring softened edges, with 1/8" PVC edge banding around the entire perimeter for a clean and durable finish
- Colors: Default is white. For another color, add -BA for black or -GB for gray to the end of the product number, e.g., WS16-6024A-BA for a black top
- Attractive appearance
- Easy to clean
- Thickness: 1 1/2"



DIMENSIONS		TYPE OF TOP							
W	D	STEEL WITH RUBBER MAT	LAMINATED HARDWOOD	STAINLESS STEEL	MARINE EDGE STAINLESS STEEL	PAINTED STEEL	DISSIPATIVE	RESISTANT ACRYLIC/PVC	PLASTIC LAMINATED
18"	21"	RC32-1821-01	WS14-1821A	RC35-1821-__*		RC37-1821	WS17-1821	WS08-1821	WS16-1821-__
	27"	RC32-1827-01	WS14-1827A	RC35-1827-__*		RC37-1827	WS17-1827	WS08-1827	WS16-1827-__
24"	21"	RC32-2421-01	WS14-2421A	RC35-2421-__*		RC37-2421	WS17-2421	WS08-2421	WS16-2421-__
	27"	RC32-2427-01	WS14-2427A	RC35-2427-__		RC37-2427	WS17-2427	WS08-2427	WS16-2427-__
30"	21"	RC32-3021-01	WS14-3021A	RC35-3021-__*		RC37-3021	WS17-3021	WS08-3021	WS16-3021-__
	24"	RC32-3024-01	WS14-3027A	RC35-3024-__*		RC37-3024	WS17-3027	WS08-3027	WS16-3027-__
	27"	RC32-3027-01	WS14-3027A	RC35-3027-__	RC35-3027-__M	RC37-3027	WS17-3027	WS08-3027	WS16-3027-__
36"	30"	RC32-3030-01	WS14-3030A	RC35-3030-__	RC35-3030-__M	RC37-3030	WS17-3030	WS08-3030	WS16-3030-__
	18"	RC32-3618-01	WS14-3618A			RC37-3618	WS17-3618	WS08-3618	WS16-3618-__
	21"	RC32-3621-01	WS14-3621A	RC35-3621-__*		RC37-3621	WS17-3621	WS08-3621	WS16-3621-__
	24"	RC32-3624-01	WS14-3624A	RC35-3624-__	RC35-3624-__M	RC37-3624	WS17-3624	WS08-3624	WS16-3624-__
	27"	RC32-3627-01	WS14-3627A	RC35-3627-__	RC35-3627-__M	RC37-3627	WS17-3627	WS08-3627	WS16-3627-__
48"	30"	RC32-3630-01	WS14-3630A	RC35-3630-__	RC35-3630-__M	RC37-3630	WS17-3630	WS08-3630	WS16-3630-__
	24"	RC32-4824-01	WS14-4824A	RC35-4824-__	RC35-4824-__M	RC37-4824	WS17-4824	WS08-4824	WS16-4824-__
	27"	RC32-4827-01	WS14-4827A	RC35-4827-__	RC35-4827-__M	RC37-4827	WS17-4827	WS08-4827	WS16-4827-__
54"	30"	RC32-4830-01	WS14-4830A	RC35-4830-__	RC35-4830-__M	RC37-4830	WS17-4830	WS08-4830	WS16-4830-__
	24"	RC32-5424-01	WS14-5424A	RC35-5424-__	RC35-5424-__M	RC37-5424	WS17-5424	WS08-5424	WS16-5424-__
	27"	RC32-5427-01	WS14-5427A	RC35-5427-__	RC35-5427-__M	RC37-5427	WS17-5427	WS08-5427	WS16-5427-__
60"	30"	RC32-5430-01	WS14-5430A	RC35-5430-__	RC35-5430-__M	RC37-5430	WS17-5430	WS08-5430	WS16-5430-__
	24"	RC32-6024-01	WS14-6024A	RC35-6024-__	RC35-6024-__M	RC37-6024	WS17-6024	WS08-6024	WS16-6024-__
	27"	RC32-6027-01	WS14-6027A	RC35-6027-__	RC35-6027-__M	RC37-6027	WS17-6027	WS08-6027	WS16-6027-__
72"	30"	RC32-6030-01	WS14-6030A	RC35-6030-__	RC35-6030-__M	RC37-6030	WS17-6030	WS08-6030	WS16-6030-__
	24"	RC32-7224-01	WS14-7224A	RC35-7224-__	RC35-7224-__M	RC37-7224	WS17-7224	WS08-7224	WS16-7224-__
	27"	RC32-7227-01	WS14-7227A	RC35-7227-__	RC35-7227-__M	RC37-7227	WS17-7227	WS08-7227	WS16-7227-__
	30"	RC32-7230-01	WS14-7230A	RC35-7230-__	RC35-7230-__M	RC37-7230	WS17-7230	WS08-7230	WS16-7230-__

NOTES: * 16ga only

For compatibility with doors with frame, choose a top 3" deeper than your cabinet, e.g., 27"D cabinet + door with 3"D frame = 30"D top

ACCESSORIES

SLOPED TOP

RC30



352

- The 30° sloped surface opens so documents and other items can be stored inside
- Compatible with a ½" dia. articulated lamp
- Load capacity: 100lb. (evenly distributed)
- For compatibility with doors with frame, choose a top 3" deeper than your cabinet, e.g., 27"D cabinet + door with 3"D frame = 30"D top
- Key lock included

PRODUCT NO.	W×D×H	COMPATIBLE DIVIDER
RC30-242708L3	24"×27"×8"	SH52-1506
RC30-302708L3	30"×27"×8"	SH52-1506
RC30-303008L3	30"×30"×8"	SH52-1806
RC30-362408L3	36"×24"×8"	SH52-1206
RC30-362708L3	36"×27"×8"	SH52-1506
RC30-363008L3	36"×30"×8"	SH52-1806
RC30-482408L3	48"×24"×8"	SH52-1206
RC30-482708L3	48"×27"×8"	SH52-1506
RC30-483008L3	48"×30"×8"	SH52-1806

PARTIAL DIVIDER

SH52



- Unique design for easy position changes
- Height: 5½"
- Easy tool-free installation

Dimensions for sloped tops

PRODUCT NO.	ACTUAL DEPTH	FOR RC30
SH52-1206	7½"	24"Deep
SH52-1506	10½"	27"Deep
SH52-1806	13½"	30"Deep

Dimensions for RB shelves

PRODUCT NO.	ACTUAL DEPTH	FOR SHELVES
SH52-1506	10½"	18"Deep
SH52-1806	13½"	21"Deep
SH52-2106	16½"	24"Deep
SH52-2406	19½"	27"Deep

Includes pictograms for easy installation

NOTE: Requires a minimum space of 8" between shelves.

BACKSTOP OR SIDESTOP

WS18 / WS98



- Painted steel: WS18
- Stainless steel: WS98
- Can be installed on back or sides depending on top dimensions
- Installs on WS14 and RC37 tops
- Height: 5"
- Clears top by approx. 3¼"
- To order: Add the type of steel required to the product number

PRODUCT NO.	LENGTH
WS__-1805	18"
WS__-2405	24"
WS__-2705	27"
WS__-3005	30"
WS__-3605	36"
WS__-4805	48"
WS__-5405	54"
WS__-6005	60"
WS__-7205	72"

NOTE: Not compatible with RC32 and RC35 tops.

STACKING CABINETS

STACKING CABINETS



352

- One shelf, adjustable in 1" increments c/c
- One shelf
- Key lock included on each door
- Heights available: 24", 30" and 34"
- Includes hardware kit for stacking
- To order: Specify the cabinet height and door type required according to the chart, e.g., R5HEE-2403 for a 36"W×24"D×24"H cabinet with double integrated doors

PRODUCT NO.	W×D
R5HBD-___	18"×21"
R5HBG-___	18"×27"
R5HCD-___	24"×21"
R5HCG-___	24"×27"
R5HDD-___	30"×21"
R5HDG-___	30"×27"
R5HEC-___	36"×18"
R5HEE-___	36"×24"

PRODUCT NO.	W×D
R5HEG-___	36"×27"
R5HHE-___	48"×24"
R5HHG-___	48"×27"
R5HJE-___	54"×24"
R5HJG-___	54"×27"
R5HKE-___	60"×24"
R5HKG-___	60"×27"

	DOOR REQUIRED	CABINET WIDTH				
		18" & 24"	30" & 36"	48"	54"	60"
00	Without door	X	X	X	X	X
01	Single integrated door	X	X			
02	Single integrated polycarbonate door	X	X			
11	Single integrated wire mesh door	X	X			
03	Double integrated doors		X	X	X	X
04	Double integrated polycarbonate doors		X	X	X	X
12	Double integrated wire mesh door		X	X	X	X
05	Double doors with frame		X	X	X	X
06	Double polycarbonate doors with frame		X	X	X	X
13	Double wire mesh doors with frame		X	X	X	X
07	Integrated sliding doors			X	X	X
08	Integrated sliding polycarbonate doors			X	X	X
14	Integrated sliding wire mesh doors			X	X	X
09	Sliding doors with frame			X		X
10	Sliding polycarbonate doors with frame			X		X
15	Sliding wire mesh doors with frame			X		X

POWER FEED PANELS AND COVER PANELS

PANEL	FINISH	
	PAINTED STEEL	STAINLESS STEEL
Power feed	RC64	RC65
Finishing	RC66	RC67
Finishing panel for computer mount	RC68	RC69

BACK PANEL	PRODUCT NO. ENDS WITH
Without	01
With	02

POWER FEED PANEL RC64 / RC65



- Painted steel: [RC64](#)
- Stainless steel: [RC65](#)
- Includes a power bar with three 15A outlets for a 15A circuit
- Three additional versions available: with a knockout for a pneumatic connection and a perforation (with a cover plate) for a telephone/Ethernet jack; or with two USB ports; or with knockout, perforation and two USB ports
- Electric voltage: 110 volts
- Installs on RC35, RC37, WS08, WS14 and WS16 tops only
- To order: Specify the panel width required: 30", 36", 48", 54", 60", 72" e.g., [RC64-301001](#) for a 30"W panel
- To order: Specify with or without a back finishing panel: Without: 01 With: 02 e.g., [RC64-301001](#) without back finishing panel

PRODUCT NO.	OPTIONS
RC64-__10__	3 power outlets (15A)
RC64-__11__	3 power outlets (15A), knockout and perforation
RC64-__12__	3 power outlets (15A), 2 USB ports (1 A, 1 C)
RC64-__13__	3 power outlets (15A), 2 USB ports (1 A, 1 C), knockout and perforation
RC65-__10__	3 power outlets (15A)
RC65-__11__	3 power outlets (15A), knockout and perforation
RC65-__12__	3 power outlets (15A), 2 USB ports (1 A, 1 C)
RC65-__13__	3 power outlets (15A), 2 USB ports (1 A, 1 C), knockout and perforation



3 power outlets (15A)



3 power outlets (15A), a knockout for a pneumatic connection and a perforation (with cover plate) for installing a telephone or network jack



3 power outlets (15A) and 2 USB ports



3 power outlets (15A), 2 USB ports, a knockout for a pneumatic connection and a perforation (with cover plate) for installing a telephone or network jack

COVER PANEL FOR COMPUTER MOUNT RC68 / RC69



- Painted steel: [RC68](#)
- Stainless steel: [RC69](#)
- Can be combined with a power feed panel or a cover panel on the same workstation or cabinet
- To order: Specify the type of finish required, e.g., [RC68-2401](#) for painted steel
- Available with or without a back finishing panel
- Installs on RC35, RC37, WS08, WS14 and WS16 tops only
- Includes a perforation in the middle for installation of RC59 computer mounts, [see page 306](#)

PRODUCT NO.	WIDTH	WITH OR WITHOUT BACK PANEL
RC__-1801	18"	Without back panel
RC__-1802	18"	With back panel
RC__-2401	24"	Without back panel
RC__-2402	24"	With back panel

COVER PANEL RC66 / RC67



- Painted steel: [RC66](#)
- Stainless steel: [RC67](#)
- Can be combined with a power feed panel or a cover panel, on the same workstation or cabinet
- Available with or without a back finishing panel
- Installs on RC35, RC37, WS08, WS14 and WS16 tops only
- To order: Specify the type of finish required, e.g., [RC66-3001](#) for painted steel

PRODUCT NO.	WIDTH	WITH OR WITHOUT BACK PANEL
RC__-1801	18"	Without back panel
RC__-1802	18"	With back panel
RC__-2401	24"	Without back panel
RC__-2402	24"	With back panel
RC__-3001	30"	Without back panel
RC__-3002	30"	With back panel
RC__-3601	36"	Without back panel
RC__-3602	36"	With back panel
RC__-4801	48"	Without back panel
RC__-4802	48"	With back panel
RC__-5401	54"	Without back panel
RC__-5402	54"	With back panel
RC__-6001	60"	Without back panel
RC__-6002	60"	With back panel
RC__-7201	72"	Without back panel
RC__-7202	72"	With back panel

ACCESSORIES

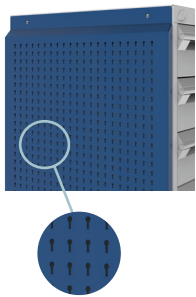
COMPUTER ARTICULATED ARMS



- To view all available types of articulating arms, [see page 306](#).

SIDE PANELS

SIDE UTILITY PANEL 5S RC02

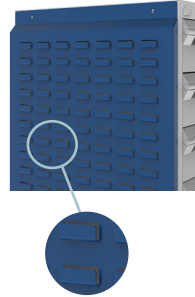


- 5S storage accessory
- Maximizes the cabinet's storage space
- Installs on the sides of R cabinets
- Quick and easy installation
- Includes perforations spaced 1" apart c/c for hanging a range of hooks
- Load capacity: 50lb./sq. ft., 500lb. max. per panel
- Compatible with: WM9F, WM9G, WM9H, WM9J and WM9L light-duty hooks; WM9A and WM9B heavy-duty hooks, [see page 262](#)
- Compatible with: WM9C rails; WM9D, WM9M, WM9N, WM9Q, WM9P, WM9R and WM9S holders; EA50 mounts; EA52 holders; EA28 and WM21 shelves, [see pages 262-263](#)
- Available in all standard R cabinet dimensions (depth, height)
- To order: Specify the housing height required, e.g., RC02-2434 for a 24"D x 34"H housing

PRODUCT NO.	CABINET DEPTH	NO. OF HOLES
RC02-18 __	18"	15
RC02-21 __	21"	18
RC02-24 __	24"	21
RC02-27 __	27"	24

NOTE: Full height installation only.

SIDE PANEL FOR PLASTIC BINS 5S RC04



- 5S storage accessory
- Maximizes the cabinet's storage space
- Installs on the sides of R cabinets
- Quick and easy installation
- Holds RG20 plastic bins, [see page 297](#)
- Compatible with all commercially available brands of plastic bins with a hanging lip
- Available in all standard R cabinet dimensions (depth, height)
- To order: Specify the housing height required: RC04-2434 for a 24"D x 34"H housing

PRODUCT NO.	CABINET DEPTH
RC04-18 __	18"
RC04-21 __	21"
RC04-24 __	24"
RC04-27 __	27"

NOTE: Full height installation only.

ESD PROTECTION

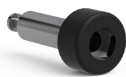
ESD PROTECTION KIT FOR CABINETS

EA91-01



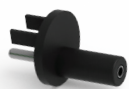
Grounding wrist strap

EA96-01



Wrist strap single socket

EA98-01



Grounding plug

EA99-01

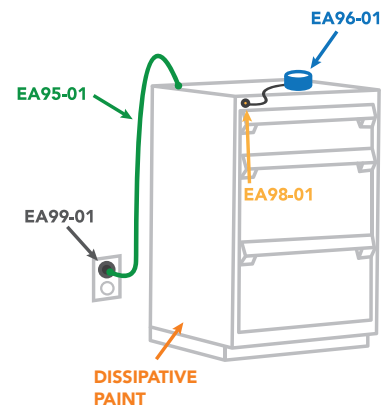


Grounding cord

EA95-01

- Basic kit for grounding the operator and cabinet
- Kit includes an EA96 wrist strap, EA98 wrist strap socket, EA95 grounding cord, and EA99 grounding plug
- Grounding wrist strap includes a 6' cord with 1MΩ resistance

PRODUCT NO.
EA91-01



CONDUCTIVE PLASTIC BINS



297

DISSIPATIVE TOP



12

DISSIPATIVE PAINT



- Special paint dissipates electric charges (Black 090)

NOTE: Contact Customer Service for ESD paint prices.

WASTE & RECYCLING CABINETS AND SINK CABINET

WASTE & RECYCLING CABINET



- Can be used as a standalone unit, as part of a cabinet configuration (e.g., counter cabinets) or integrated underneath a work surface
- Used for sorting waste and items for recycling
- Includes one 26"H drawer with labeled drawer handle to facilitate sorting

- Includes two 15¼"W × 11"D × 20"H containers: a black container for waste (RK09-02) and a blue container for recycling (RK09-01)
- The drawer includes a divider which secures the containers and also allows items to be stored behind

PRODUCT NO.	W × D × H
R5XCG-1100	24" × 27" × 30"
R5XDG-1100	30" × 27" × 30"

WASTE & RECYCLING DRAWER



- Used for sorting waste and items for recycling
- Includes a labeled drawer handle to facilitate sorting
- Drawer heights available: 17" and 26"
- The 17"H drawer includes two 14¾"W × 10¼"D × 15"H containers: a black container for waste and a blue container for recycling
- The 26"H drawer includes two 15¼"W × 11"D × 20"H containers: a black container for waste and a blue container for recycling

- The drawer includes a divider which secures the containers and also allows items to be stored behind
- To add a locking or security mechanism, complete the product number with the locking mechanism product number required, e.g., R51CG-X1701A to add an integrated lock-in mechanism

PRODUCT NO.	W × D × H
R51CG-X1701_	24" × 27" × 17"
R51CG-X2601_	24" × 27" × 26"
R51DG-X1701_	30" × 27" × 17"
R51DG-X2601_	30" × 27" × 26"

NOTE: The drawer is also available separately; see RF53 for a painted steel front and RF54 for a stainless steel front

SINK CABINET



352

- The top is open to allow for installation of a sink
- Includes an opening on the back of the housing to allow for installation of a drain and pipes
- One shelf
- Models with a door with frame are compatible with drawers and roll-out shelves
- Key lock included on each door
- Compatible with bases, [see pages 19-20](#)

- Heights available: 28", 30" and 34"
- To order: Specify the cabinet height and door type required according to the chart below, e.g., R5TDD-28 01

PRODUCT NO.	W × D	DOOR REQUIRED
R5TCD-___*	24" × 21"	01 Single integrated door
R5TCG-___*	24" × 27"	02 Double integrated doors
R5TDD-___**	30" × 21"	03 Double doors with frame
R5TDG-___**	30" × 27"	04 Integrated sliding doors
R5THD-___	48" × 21"	05 Sliding doors with frame
R5THG-___	48" × 27"	

NOTES: ** Available with single door only

** These models are not compatible with sliding doors

Work surfaces must be ordered separately (work surface cutting is not provided by Rousseau), [see page 12 and 13](#).

Sink not included.

HOUSINGS

R HEAVY-DUTY CABINET HOUSING

RA30

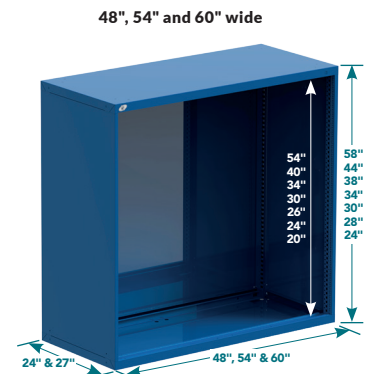
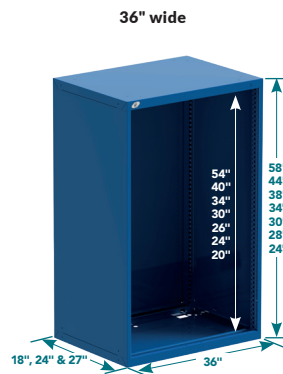
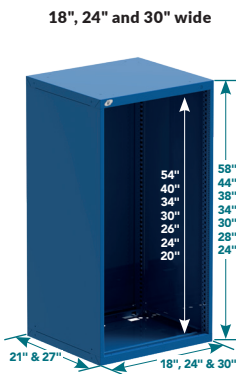
- Compatible with modular drawers, roll-out shelves, and shelves
- Compatible with integrated doors and doors with frame
- The housing units include knockouts
 - on the top for stacking cabinets and installing accessories or work surfaces
 - on the sides and back for anchoring cabinets side by side or back to back and for attaching accessories
- Includes a concrete-floor anchoring kit for cabinet housings and bases, and hardware for stacking cabinets

- A cabinet lock allows users to lock all drawers and roll-out shelves in the cabinet at the same time
- Four types of lock available: L3 for a key lock, LP for a safety hasp, L50 for an digital lock or L100 for a smart lock
- To order: Specify the type of door and lock required, e.g., RA30-362438L3 for a R Heavy-duty Cabinet with a L3 standard key lock
- To order a true One-Drawer-at-a-Time mechanism, add A to the product number

NOTE: NFC transponders are not included with the smart lock, they must be ordered separately (pack of 5). See page 356.



352-356



PRODUCT NO.	TOTAL HEIGHT	INSIDE HEIGHT
18" x 21"		
RA30-182124__	24"	20"
RA30-182128__	28"	24"
RA30-182130__	30"	26"
RA30-182134__	34"	30"
RA30-182138__	38"	34"
RA30-182144__	44"	40"
RA30-182158__	58"	54"
18" x 27"		
RA30-182724__	24"	20"
RA30-182728__	28"	24"
RA30-182730__	30"	26"
RA30-182734__	34"	30"
RA30-182738__	38"	34"
RA30-182744__	44"	40"
RA30-182758__	58"	54"
24" x 21"		
RA30-242124__	24"	20"
RA30-242128__	28"	24"
RA30-242130__	30"	26"
RA30-242134__	34"	30"
RA30-242138__	38"	34"
RA30-242144__	44"	40"
RA30-242158__	58"	54"
24" x 27"		
RA30-242724__	24"	20"
RA30-242728__	28"	24"
RA30-242730__	30"	26"
RA30-242734__	34"	30"
RA30-242738__	38"	34"
RA30-242744__	44"	40"
RA30-242758__	58"	54"

PRODUCT NO.	TOTAL HEIGHT	INSIDE HEIGHT
30" x 21"		
RA30-302124__	24"	20"
RA30-302128__	28"	24"
RA30-302130__	30"	26"
RA30-302134__	34"	30"
RA30-302138__	38"	34"
RA30-302144__	44"	40"
RA30-302158__	58"	54"
30" x 27"		
RA30-302724__	24"	20"
RA30-302728__	28"	24"
RA30-302730__	30"	26"
RA30-302734__	34"	30"
RA30-302738__	38"	34"
RA30-302744__	44"	40"
RA30-302758__	58"	54"
36" x 18"		
RA30-361824__	24"	20"
RA30-361828__	28"	24"
RA30-361830__	30"	26"
RA30-361834__	34"	30"
RA30-361838__	38"	34"
RA30-361844__	44"	40"
RA30-361858__	58"	54"
36" x 24"		
RA30-362424__	24"	20"
RA30-362428__	28"	24"
RA30-362430__	30"	26"
RA30-362434__	34"	30"
RA30-362438__	38"	34"
RA30-362444__	44"	40"
RA30-362458__	58"	54"

PRODUCT NO.	TOTAL HEIGHT	INSIDE HEIGHT
36" x 27"		
RA30-362724__	24"	20"
RA30-362728__	28"	24"
RA30-362730__	30"	26"
RA30-362734__	34"	30"
RA30-362738__	38"	34"
RA30-362744__	44"	40"
RA30-362758__	58"	54"
48" x 24"		
RA30-482424__	24"	20"
RA30-482428__	28"	24"
RA30-482430__	30"	26"
RA30-482434__	34"	30"
RA30-482438__	38"	34"
RA30-482444__	44"	40"
RA30-482458__	58"	54"
48" x 27"		
RA30-482724__	24"	20"
RA30-482728__	28"	24"
RA30-482730__	30"	26"
RA30-482734__	34"	30"
RA30-482738__	38"	34"
RA30-482744__	44"	40"
RA30-482758__	58"	54"
54" x 24"		
RA30-542424__	24"	20"
RA30-542428__	28"	24"
RA30-542430__	30"	26"
RA30-542434__	34"	30"
RA30-542438__	38"	34"
RA30-542444__	44"	40"
RA30-542458__	58"	54"

PRODUCT NO.	TOTAL HEIGHT	INSIDE HEIGHT
54" x 27"		
RA30-542724__	24"	20"
RA30-542728__	28"	24"
RA30-542730__	30"	26"
RA30-542734__	34"	30"
RA30-542738__	38"	34"
RA30-542744__	44"	40"
RA30-542758__	58"	54"
60" x 24"		
RA30-602424__	24"	20"
RA30-602428__	28"	24"
RA30-602430__	30"	26"
RA30-602434__	34"	30"
RA30-602438__	38"	34"
RA30-602444__	44"	40"
RA30-602458__	58"	54"
60" x 27"		
RA30-602724__	24"	20"
RA30-602728__	28"	24"
RA30-602730__	30"	26"
RA30-602734__	34"	30"
RA30-602738__	38"	34"
RA30-602744__	44"	40"
RA30-602758__	58"	54"

BASES

FRONT ACCESS FORKLIFT BASE RA52



- 2"H base used for moving the cabinet from the front with a forklift
- Includes a front kick plate
- Front kick plate is recessed to allow users to stand closer to the cabinet
- Designed so the cabinet can be anchored to the floor
- Compatible with RA74 Leveling Glide Kit
- Compatible with an optional RA54 Angled Kick Plate

PRODUCT NO.	W × D
RA52-182102	18" × 21"
RA52-182702	18" × 27"
RA52-242102	24" × 21"
RA52-242702	24" × 27"
RA52-302102	30" × 21"
RA52-302702	30" × 27"
RA52-361802	36" × 18"
RA52-362402	36" × 24"

PRODUCT NO.	W × D
RA52-362702	36" × 27"
RA52-482402	48" × 24"
RA52-482702	48" × 27"
RA52-542402	54" × 24"
RA52-542702	54" × 27"
RA52-602402	60" × 24"
RA52-602702	60" × 27"

NOTES: Not compatible with casters
Not to be used for stacking cabinets

FRONT AND SIDE ACCESS FORKLIFT BASE RA53



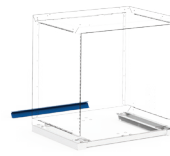
- 4"H base used for moving the cabinet from the front or side with a forklift, or from the front with a pallet-jack
- Includes a front kick plate
- Includes a recessed kick plate in the center to allow users to stand closer to the cabinet
- Designed so the cabinet can be anchored to the floor
- Compatible with RA74 Leveling Glide Kit
- Compatible with an optional RA54 Angled Kick Plate

PRODUCT NO.	W × D
RA53-182104	18" × 21"
RA53-182704	18" × 27"
RA53-242104	24" × 21"
RA53-242704	24" × 27"
RA53-302104	30" × 21"
RA53-302704	30" × 27"
RA53-361804	36" × 18"
RA53-362404	36" × 24"

PRODUCT NO.	W × D
RA53-362704	36" × 27"
RA53-482404	48" × 24"
RA53-482704	48" × 27"
RA53-542404	54" × 24"
RA53-542704	54" × 27"
RA53-602404	60" × 24"
RA53-602704	60" × 27"

NOTES: Not compatible with casters
Not to be used for stacking cabinets

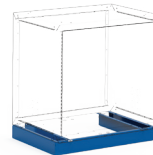
ANGLED KICK PLATE RA54



- Closes off the back of 2"H and 4"H forklift bases (RA52 and RA53)

PRODUCT NO.	W × H
RA54-1802	18" × 2"
RA54-1804	18" × 4"
RA54-2402	24" × 2"
RA54-2404	24" × 4"
RA54-3002	30" × 2"
RA54-3004	30" × 4"
RA54-3602	36" × 2"
RA54-3604	36" × 4"
RA54-4802	48" × 2"
RA54-4804	48" × 4"
RA54-5402	54" × 2"
RA54-5404	54" × 4"
RA54-6002	60" × 2"
RA54-6004	60" × 4"

RECESSED BASE RA55 / RA57



- Painted steel: RA55
- Stainless steel: RA57
- Raises the height of a cabinet by 2" or 4"
- Includes a removable kick plate at the front for a neater finish
- The front kick plate is on a straight angle for easier floor cleaning
- Creates a 2" recessed space to allow users to stand closer to the cabinet
- Designed so the cabinet can be anchored to the floor
- Compatible with an optional RA56 or RA58 Straight Kick Plate
- Compatible with RA74 Leveling Glide Kit
- To order: Add the type of steel required to the product number e.g., RA57-302702 for 30"W × 27"D × 2"H stainless steel base
- For a replacement front kick plate, order an RY75-WWHH (painted steel) or RY77-WWHH (stainless steel).

PRODUCT NO.	W × D × H
RA__-182102	18" × 21" × 2"
RA__-182104	18" × 21" × 4"
RA__-182702	18" × 27" × 2"
RA__-182704	18" × 27" × 4"
RA__-242102	24" × 21" × 2"
RA__-242104	24" × 21" × 4"
RA__-242702	24" × 27" × 2"
RA__-242704	24" × 27" × 4"
RA__-302102	30" × 21" × 2"
RA__-302104	30" × 21" × 4"
RA__-302702	30" × 27" × 2"
RA__-302704	30" × 27" × 4"
RA__-361802	36" × 18" × 2"
RA__-361804	36" × 18" × 4"
RA__-362402	36" × 24" × 2"
RA__-362404	36" × 24" × 4"
RA__-362702	36" × 27" × 2"
RA__-362704	36" × 27" × 4"

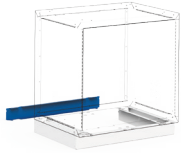
PRODUCT NO.	W × D × H
RA__-482402	48" × 24" × 2"
RA__-482404	48" × 24" × 4"
RA__-482702	48" × 27" × 2"
RA__-482704	48" × 27" × 4"
RA__-542402	54" × 24" × 2"
RA__-542404	54" × 24" × 4"
RA__-542702	54" × 27" × 2"
RA__-542704	54" × 27" × 4"
RA__-602402	60" × 24" × 2"
RA__-602404	60" × 24" × 4"
RA__-602702	60" × 27" × 2"
RA__-602704	60" × 27" × 4"

NOTES: Not compatible with casters
Not to be used for stacking cabinet

COMPONENTS

STRAIGHT KICK PLATE

RA56 / RA58

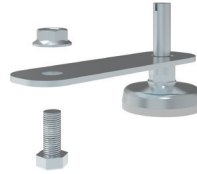


- Painted steel: RA56
- Stainless steel: RA58
- Closes off the back of 2"H and 4"H recessed bases (RA55 and RA57)
- To order: Add the type of steel required to the product number, e.g., RA58-4804 for a 48"W x 4"H stainless steel straight kick plate

PRODUCT NO.	W x H
RA__-1802	18" x 2"
RA__-1804	18" x 4"
RA__-2402	24" x 2"
RA__-2404	24" x 4"
RA__-3002	30" x 2"
RA__-3004	30" x 4"
RA__-3602	36" x 2"
RA__-3604	36" x 4"
RA__-4802	48" x 2"
RA__-4804	48" x 4"
RA__-5402	54" x 2"
RA__-5404	54" x 4"
RA__-6002	60" x 2"
RA__-6004	60" x 4"

LEVELING GLIDE KIT

RA74

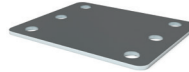


- Sold in kits of 4
- Adjusts the height of cabinets 1 1/8" to 2" on uneven floor surfaces

PRODUCT NO.
RA74-01

SHIM PLATE

RA80



- Sold individually
- Levels cabinets on uneven surfaces
- Compatible with floor anchoring kits
- 12ga galvanized steel

PRODUCT NO. THICKNESS:
RA80-12 12 gauge (0,100)

DRAWERS, SHELVES AND LOCKING / SECURITY MECHANISMS

HEAVY-DUTY MODULAR DRAWER

RF31 / RF35



352-356

- Painted steel drawer: RF31
- Drawer with stainless steel front and light gray 071 painted steel interior: RF35
- 400lb. load capacity, 100% extension
- Heavy-duty construction
- Easy to install
- Vast choice of accessories available to customize the drawer to your storage needs, [see pages 294-298](#)
- Drawer heights available: 03", 04", 05", 06", 07", 08", 09", 10", 12" and 14"
- To order: Add the drawer height to the product number and specify the type of drawer front required (painted steel or stainless steel), e.g., RF31-362406
- For preconfigured modular drawers with compartments, [see pages 276-293](#)

PRODUCT NO.	W x D
RF__-1821__	18" x 21"
RF__-1827__	18" x 27"
RF__-2421__	24" x 21"
RF__-2427__	24" x 27"
RF__-3021__	30" x 21"
RF__-3027__	30" x 27"
RF__-3618__	36" x 18"
RF__-3624__	36" x 24"
RF__-3627__	36" x 27"
RF__-4824__	48" x 24"
RF__-4827__	48" x 27"
RF__-5424__	54" x 24"
RF__-5427__	54" x 27"
RF__-6024__	60" x 24"
RF__-6027__	60" x 27"

HEAVY-DUTY FRONT ACCESS ROLL-OUT SHELF

RF40

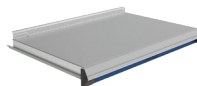


- 400lb. load capacity, 100% extension
- Heavy-duty construction
- Easy to install
- Painted steel with 3"H edges on the sides and back
- Total height: 6"
- Full access to contents

PRODUCT NO.	W x D	PRODUCT NO.	W x D
RF40-1821	18" x 21"	RF40-4824	48" x 24"
RF40-1827	18" x 27"	RF40-4827	48" x 27"
RF40-2421	24" x 21"	RF40-5424	54" x 24"
RF40-2427	24" x 27"	RF40-5427	54" x 27"
RF40-3021	30" x 21"	RF40-6024	60" x 24"
RF40-3027	30" x 27"	RF40-6027	60" x 27"
RF40-3618	36" x 18"		
RF40-3624	36" x 24"		
RF40-3627	36" x 27"		

HEAVY-DUTY 3-SIDED ACCESS ROLL-OUT SHELF

RF44



- 400lb. load capacity, 100% extension
- Heavy-duty construction
- Easy to install
- Galvanized steel shelf with 1 1/2"H edge at the back
- Total height: 5"
- Can be used as a work surface

PRODUCT NO.	W x D	PRODUCT NO.	W x D
RF44-1821	18" x 21"	RF44-4824	48" x 24"
RF44-1827	18" x 27"	RF44-4827	48" x 27"
RF44-2421	24" x 21"	RF44-5424	54" x 24"
RF44-2427	24" x 27"	RF44-5427	54" x 27"
RF44-3021	30" x 21"	RF44-6024	60" x 24"
RF44-3027	30" x 27"	RF44-6027	60" x 27"
RF44-3618	36" x 18"		
RF44-3624	36" x 24"		
RF44-3627	36" x 27"		

SHELF

RB20 / RB21



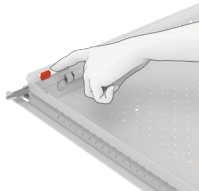
- For storage of bulky items
- The back and side edges prevent objects from falling to the bottom of the cabinet
- Height can be adjusted in 1" increments c/c
- Up to 400lb. load capacity, evenly distributed
- Includes perforations on the top spaced 3" apart c/c for inserting SH52 Partial Dividers. Allow 3" vertical clearance for installation, see page 14

PRODUCT NO.	HOUSING SIZE W × D	LOAD CAPACITY (LB.)
RB20-1821	18" × 21"	200
RB20-1827	18" × 27"	200
RB20-2421	24" × 21"	200
RB20-2427	24" × 27"	200
RB21-3021	30" × 21"	400
RB21-3027	30" × 27"	400
RB21-3618	36" × 18"	400
RB21-3624	36" × 24"	400
RB21-3627	36" × 27"	400
RB21-4821	48" × 21"	400
RB21-4824	48" × 24"	400
RB21-4827	48" × 27"	400
RB21-5424	54" × 24"	400
RB21-5427	54" × 27"	400
RB21-6024	60" × 24"	400
RB21-6027	60" × 27"	400

NOTE: Actual usable space is 2" c/c less than the height, 2¼" c/c less than the width and 4" c/c less than the depth.

LOCK-OUT MECHANISM

RF85

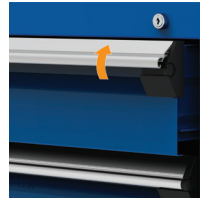


- For both drawers and roll-out shelves
- Locks drawers and roll-out shelves in an open position
- Activated manually, only when required
- Compatible with all drawer accessories
- Plastic bins in the back row may make it more difficult to activate the mechanism

PRODUCT NO.
RF85

INTEGRATED LOCK-IN MECHANISM

A



- Automatically activated when lifting the handle up
- The drawer or roll-out shelf can be opened with one hand only
- Closes with a simple push
- Stops drawer or roll-out shelf from opening on their own
- Easy to retrofit
- To order: Add A to the product number for the drawer, preconfigured compartment layout or roll-out shelf, e.g., RF31-362406A
- For replacement parts or to retrofit this mechanism, order an RY08-WWA

PRODUCT NO.
A

ECONO LOCK-IN MECHANISM

B



- Activated with the right hand by sliding the mechanism with thumb
- The drawer or roll-out shelf closes without having to reactivate the slide mechanism
- Stops drawer or roll-out shelf from opening on their own
- Easy to retrofit
- To order: Add B to the product number for the drawer, preconfigured compartment layout or roll-out shelf, e.g., RF31-362406B
- For replacement parts or to retrofit this mechanism, order an RY01-B

PRODUCT NO.
B

DRAWER LOCK

L3

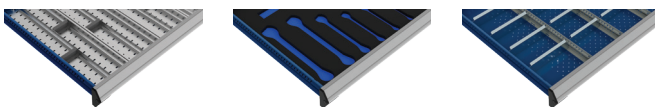


- Compatible with all drawer dimensions
- Does not reduce the drawer's storage space
- Easy to retrofit
- To order: Add L3 to the product number for the drawer or preconfigured compartment layout, e.g., RF31-362406L3
- For replacement parts or to retrofit this mechanism, order an RY01-L3

PRODUCT NO.
L3



DRAWER ACCESSORIES



We offer a wide variety of drawer accessories that integrate with each other to help you organize and locate small parts. They are ideal for high-density storage and ensure you retain space for growth.

ACCESSORIES	PRODUCT NO.	CATALOG PAGE
Front to back partition	RG00	p. 294
Side to side partition	RG01	p. 294
Divider	RG10	p. 295
Plastic bins	RG20	p. 297
Divider for plastic bins	RG22 / RG24	p. 297
Conductive plastic bins	RG21	p. 297
Conductive divider for plastic bins	RG23 / RG25	p. 297
Groove tray	RG35	p. 298
Divider for groove trays	RG39	p. 298
Tool foam	RG42	p. 297

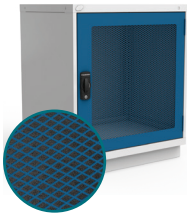


DOORS, HANDLES AND LOCKS

SINGLE INTEGRATED DOOR, SOLID, POLYCARBONATE OR WIRE MESH



RB62 / RB61 / RB43



352-356

- Single integrated door: **RB62**
- Single polycarbonate integrated door: **RB61**
- Single wire mesh integrated door: **RB43**
- Single door for 18"W, 24"W, 30"W and 36"W cabinets
- RB62 integrated doors have a closed back finish to increase rigidity and enhance aesthetics
- RB61 integrated polycarbonate doors have excellent impact resistance
- RB43 integrated wire mesh doors promote airflow and provide visibility of the interior without opening
- Integrated doors are adjustable vertically and horizontally
- Compatible with RB21/RB20 Shelf
- Opens 180° for full access to items stored inside
- Factory installed on RA30 cabinet housings
- Some integrated door heights can be combined with drawers mounted above or below. For the latter case, you must order an RB20/RB21 shelf and install it above the bank of drawers
- Four types of lock available: **L3** for a key lock, **LP** for a safety hasp, **L50** for an digital lock or **L100** for a smart lock
- To order: Specify the type of door and lock required, e.g., **RB61-3034L50** for a 30"W × 34"H integrated polycarbonate door and L50 digital lock
- For a retrofit lock mechanism on a single integrated solid, polycarbonate or wire mesh door, **see pages 352-356**

PRODUCT NO.	W×H
RB__-1820__	18"×20"
RB__-1824__	18"×24"
RB__-1826__	18"×26"
RB__-1830__	18"×30"
RB__-1834__	18"×34"
RB__-1840__	18"×40"
RB__-1854__	18"×54"
RB__-2420__	24"×20"
RB__-2424__	24"×24"
RB__-2426__	24"×26"
RB__-2430__	24"×30"
RB__-2434__	24"×34"
RB__-2440__	24"×40"
RB__-2454__	24"×54"

PRODUCT NO.	W×H
RB__-3020__	30"×20"
RB__-3024__	30"×24"
RB__-3026__	30"×26"
RB__-3030__	30"×30"
RB__-3034__	30"×34"
RB__-3040__	30"×40"
RB__-3054__	30"×54"
RB__-3620__	36"×20"
RB__-3624__	36"×24"
RB__-3626__	36"×26"
RB__-3630__	36"×30"
RB__-3634__	36"×34"
RB__-3640__	36"×40"
RB__-3654__	36"×54"



R5XEE-1004

NOTES: Not compatible with RF31/RF35 drawers or RF40/RF44 roll-out shelves
NFC transponders are not included with the smart lock, they must be ordered separately (pack of 5). **See page 356.**





DOUBLE INTEGRATED DOORS, SOLID, POLYCARBONATE OR WIRE MESH

RB67 / RB66 / RB49



352-356

- Double integrated doors: [RB67](#)
- Double polycarbonate integrated doors: [RB66](#)
- Double wire mesh integrated doors: [RB49](#)
- Double doors for 30"W, 36"W, 48"W, 54"W and 60"W cabinets
- RB67 double integrated doors have a closed back finish to increase rigidity and enhance aesthetics
- RB66 double integrated polycarbonate doors have excellent impact resistance
- RB49 double integrated wire mesh doors promote airflow and provide visibility of the interior without opening
- Integrated doors are adjustable vertically and horizontally
- Compatible with RB21 shelf
- Opens 180° for full access to items stored inside
- Factory installed on RA30 cabinet housings
- Some integrated door heights can be combined with drawers mounted above or below. You must order an RB21 shelf and install it above the bank of drawers for drawers mounted below, or an RB65 crossbar for drawers mounted above
- Four types of lock available: [L3](#) for a key lock, [LP](#) for a safety hasp, [L50](#) for an digital lock or [L100](#) for a smart lock
- To order: Specify the type of door and lock required, e.g., [RB66-4820L3](#) for 48"W × 20"H double integrated polycarbonate doors and a key lock
- For a retrofit lock mechanism on a double integrated solid, polycarbonate or wire mesh doors, [see pages 352-356](#)

PRODUCT NO.	W × H
RB_-3020_	30" × 20"
RB_-3024_	30" × 24"
RB_-3026_	30" × 26"
RB_-3030_	30" × 30"
RB_-3034_	30" × 34"
RB_-3040_	30" × 40"
RB_-3054_	30" × 54"
RB_-3620_	36" × 20"
RB_-3624_	36" × 24"
RB_-3626_	36" × 26"
RB_-3630_	36" × 30"
RB_-3634_	36" × 34"
RB_-3640_	36" × 40"
RB_-3654_	36" × 54"
RB_-4820_	48" × 20"
RB_-4824_	48" × 24"
RB_-4826_	48" × 26"
RB_-4830_	48" × 30"

PRODUCT NO.	W × H
RB_-4834_	48" × 34"
RB_-4840_	48" × 40"
RB_-4854_	48" × 54"
RB_-5420_	54" × 20"
RB_-5424_	54" × 24"
RB_-5426_	54" × 26"
RB_-5430_	54" × 30"
RB_-5434_	54" × 34"
RB_-5440_	54" × 40"
RB_-5454_	54" × 54"
RB_-6020_	60" × 20"
RB_-6024_	60" × 24"
RB_-6026_	60" × 26"
RB_-6030_	60" × 30"
RB_-6034_	60" × 34"
RB_-6040_	60" × 40"
RB_-6054_	60" × 54"

NOTES: Not compatible with RF31/RF35 drawers or RF40/RF44 roll-out shelves.
Compatible with the RB65 crossbar for double integrated doors, [see page 24](#).
NFC transponders are not included with the smart lock, they must be ordered separately (pack of 5). [See page 356](#).

DOUBLE DOORS WITH FRAME, SOLID, POLYCARBONATE OR WIRE MESH

RB75 / RB76 / RB79



352-356

- Double doors with frame: [RB75](#)
- Double polycarbonate doors with frame: [RB76](#)
- Double wire mesh doors with frame: [RB79](#)
- Double doors for 30"W, 36"W, 48"W, 54"W and 60"W cabinets
- RB75 double doors with frame have a closed back finish to increase rigidity and enhance aesthetics
- RB76 double polycarbonate doors with frame have excellent impact resistance
- RB79 double wire mesh doors with frame promote airflow and provide visibility of the interior without opening
- Installs on cabinets with drawers or roll-out shelves
- Opens 180° for full access to items stored inside
- Factory installed on RA30 cabinet housings
- Thickness of the frame: 3"
- Four types of lock available: [L3](#) for a key lock, [LP](#) for a safety hasp, [L50](#) for an digital lock or [L100](#) for a smart lock
- To order: Specify the type of door and lock required, e.g., [RB76-4824LP](#) for 48"W × 24"H double polycarbonate doors with frame and a safety hasp
- For a retrofit lock mechanism on a double doors with frame solid, polycarbonate or wire mesh, [see pages 352-356](#)

PRODUCT NO.	W × H
RB_-3024_	30" × 24"
RB_-3028_	30" × 28"
RB_-3030_	30" × 30"
RB_-3034_	30" × 34"
RB_-3038_	30" × 38"
RB_-3044_	30" × 44"
RB_-3058_	30" × 58"
RB_-3624_	36" × 24"
RB_-3628_	36" × 28"
RB_-3630_	36" × 30"
RB_-3634_	36" × 34"
RB_-3638_	36" × 38"
RB_-3644_	36" × 44"
RB_-3658_	36" × 58"
RB_-4824_	48" × 24"
RB_-4828_	48" × 28"
RB_-4830_	48" × 30"
RB_-4834_	48" × 34"

PRODUCT NO.	W × H
RB_-4838_	48" × 38"
RB_-4844_	48" × 44"
RB_-4858_	48" × 58"
RB_-5424_	54" × 24"
RB_-5428_	54" × 28"
RB_-5430_	54" × 30"
RB_-5434_	54" × 34"
RB_-5438_	54" × 38"
RB_-5444_	54" × 44"
RB_-5458_	54" × 58"
RB_-6024_	60" × 24"
RB_-6028_	60" × 28"
RB_-6030_	60" × 30"
RB_-6034_	60" × 34"
RB_-6038_	60" × 38"
RB_-6044_	60" × 44"
RB_-6058_	60" × 58"

NOTES: Compatible with the RB65 crossbar for double integrated doors, [see page 24](#).
NFC transponders are not included with the smart lock, they must be ordered separately (pack of 5). [See page 356](#).



CROSSBAR FOR DOUBLE INTEGRATED DOORS

RB65



- Required for double integrated doors with drawers above
- Required a crossbar for double integrated doors with an digital lock or a smart lock and drawers above, complete the following product code: L50

PRODUCT NO.	WIDTH
RB65-30__	30"
RB65-36__	36"
RB65-48__	48"
RB65-54__	54"
RB65-60__	60"

INTEGRATED SLIDING DOORS, SOLID, POLYCARBONATE OR WIRE MESH RB50 / RB51 / RB33



- Integrated sliding doors: RB50
- Integrated sliding polycarbonate doors: RB51
- Integrated sliding wire mesh doors: RB33
- Doors for 48"W, 54"W and 60"W single cabinets
- RB50 integrated sliding doors have a closed back finish to increase rigidity and enhance aesthetics
- RB51 polycarbonate integrated sliding doors have excellent impact resistance
- RB33 integrated sliding wire mesh doors promote airflow and provide visibility of the interior without opening
- Compatible with RB21 shelf
- Provides maximum clearance for handling items stored in the cabinet
- Factory installed on RA30 cabinet housings
- Key lock included
- To order: Specify the type of door required, e.g., RB51-6020L3 for a 60"W x 20"H integrated sliding polycarbonate door
- For a retrofit lock mechanism on sliding doors solid, polycarbonate or mesh, see page 352



352

PRODUCT NO.	W x H
RB__-4820L3	48" x 20"
RB__-4824L3	48" x 24"
RB__-4826L3	48" x 26"
RB__-4830L3	48" x 30"
RB__-4834L3	48" x 34"
RB__-4840L3	48" x 40"
RB__-4854L3	48" x 54"
RB__-5420L3	54" x 20"
RB__-5424L3	54" x 24"
RB__-5426L3	54" x 26"
RB__-5430L3	54" x 30"
RB__-5434L3	54" x 34"
RB__-5440L3	54" x 40"
RB__-5454L3	54" x 54"
RB__-6020L3	60" x 20"
RB__-6024L3	60" x 24"
RB__-6026L3	60" x 26"
RB__-6030L3	60" x 30"
RB__-6034L3	60" x 34"
RB__-6040L3	60" x 40"
RB__-6054L3	60" x 54"

SLIDING DOORS WITH FRAME, SOLID, POLYCARBONATE OR WIRE MESH RB55 / RB56 / RB39



- Sliding doors with frame: RB55
- Sliding polycarbonate doors with frame: RB56
- Sliding wire mesh doors with frame: RB39
- Sliding doors for double cabinets (2 x 24"W or 2 x 30"W)
- Compatible with double cabinets (2 x 24"W or 2 x 30"W) with drawers or roll-out shelves
- RB55 sliding doors with frame have a closed back finish to increase rigidity and enhance aesthetics
- RB56 polycarbonate sliding doors with frame have excellent impact resistance
- RB39 sliding wire mesh doors with frame promote airflow and provide visibility of the interior without opening
- Provides maximum clearance for handling items stored in the cabinet
- Factory installed on RA30 cabinet housings
- Key lock included
- Thickness of the frame: 3"
- To order: Specify the type of door required, e.g., RB56-6024L3 for a 60"W x 24"H sliding polycarbonate door with frame
- For a retrofit lock mechanism on sliding doors with frame solid, polycarbonate or wire mesh door, see page 352



352

PRODUCT NO.	W x H
RB__-4824L3	48" x 24"
RB__-4828L3	48" x 28"
RB__-4830L3	48" x 30"
RB__-4834L3	48" x 34"
RB__-4838L3	48" x 38"
RB__-4844L3	48" x 44"
RB__-4858L3	48" x 58"
RB__-6024L3	60" x 24"
RB__-6028L3	60" x 28"
RB__-6030L3	60" x 30"
RB__-6034L3	60" x 34"
RB__-6038L3	60" x 38"
RB__-6044L3	60" x 44"
RB__-6058L3	60" x 58"

NOTES: Not compatible with 48"W, 54"W or 60"W single cabinets.
Not compatible with L50 Digital Lock or with L100 Smart Lock.

NOTES: Not compatible with RF31 / RF35 drawers or RF40 / RF44 roll-out shelves
Not compatible with L50 Digital Lock or with L100 Smart Lock.



ROTATING HANDLE

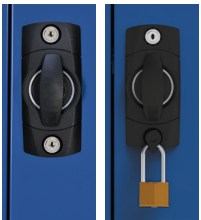


Door opens by turning handle to the left or the right.



LOCK POSITION

The hasp or lock are positioned so they do not impede the hand.



DOUBLE LOCK



- Two L3 / LP locks can be used for maximum security
- To order: Specify the type of lock required, e.g., RB61-3034L3+CZ06-LP to add an LP lock as well as the lock ordered



L50 DIGITAL LOCK AND L100 SMART LOCK

Easier management of cabinet access permissions.



354-356

PRODUCT NO.	DESCRIPTION
CZ05-L3	To add an L3 lock
CZ06-LP	To add an LP lock

NOTE: To add a second lock to an existing door, please contact Customer Service.



L COMPACT STATIONARY CABINET

L CABINET



L COMPACT STATIONARY CABINET

The L Compact Stationary Cabinet has been developed to better meet our customers' needs in terms of dimensions offered, drawer configurations and accessories that fit in a compact cabinet.

The L Compact Stationary Cabinet is 18" wide and comes in two depths (21" and 27") and five heights (24", 28", 30", 34" and 40"). A 2" or 4" painted steel or stainless steel base can also be added to raise the cabinet height slightly or to create more space for feet. With the security system, you can lock all the drawers with a single action.

There are 6 different drawer heights available from 3" to 12", and the drawers can be accessorized with partitions, dividers and plastic bins for optimal organization of your parts. Each drawer has a 100lb. load capacity and an ergonomic, easy-grip handle.

The L Compact Stationary Cabinet is an excellent alternative to the R heavy-duty line. Learn more in the following pages.



L3ABD-2418L3C



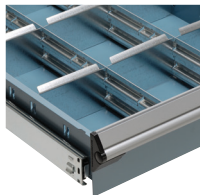
L3ABD-3442L3C

THE ROUSSEAU DIFFERENCE



100lb. load capacity per drawer.

100% extension for both drawer depths.



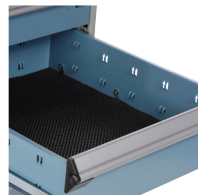
Partitions and dividers are clipped in.



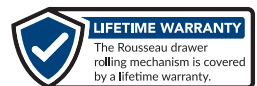
Wide variety of drawer accessories available: full-depth partitions, dividers, plastic bins, hanging file holders, protective foam, etc.



Central locking on the cabinet housing.



Six drawer heights available: 3", 4", 5", 6", 8" and 12".



PRECONFIGURED MODELS – CABINETS

HERE ARE SOME OF OUR MOST POPULAR PRECONFIGURED MODELS OF THE L COMPACT STATIONARY CABINETS

- The doors are factory installed with hinges on the left. They can be installed on the right upon request
- To order a key lock on the cabinet housing (for models with more than one drawer) or on the door, add L3 to the end of the product number
- To add a LP safety hasp, an L50 digital lock or an L100 smart lock to a door or to your L cabinet, see page 31
- To order a cabinet with a 4" base, add C to the end of the product number for a painted steel base or D for a stainless steel base, e.g., L3ABD-2401L3 C for an 18"W × 21"D × 24"H cabinet, with four drawers, a lock and a 4"H painted steel base



IMPORTANT

Drawer compartments are included in all models. See the table for the number of compartments.



To order drawers without compartments, replace the last two digits of the model number with the next even number up.

e.g., L3ABD-2401 with L3ABD-2402 without

NUMBER OF COMPARTMENTS (LAYOUT CODE)

DRAWER DIMENSIONS	18"W × 21"D	18"W × 27"D
3"H to 5"H	9 (0206)	9 (0206)
6"H and 8"H	6 (0104)	6 (0104)
12"H	4 (0102)	4 (0102)

24" HIGH (W × D × H)



4 DRAWERS
L3ABD-2401__ 18" × 21" × 24"
L3ABG-2401__ 18" × 27" × 24"



4 DRAWERS
L3ABD-2403__ 18" × 21" × 24"
L3ABG-2403__ 18" × 27" × 24"



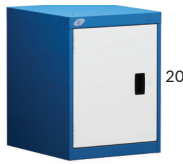
4 DRAWERS
L3ABD-2405__ 18" × 21" × 24"
L3ABG-2405__ 18" × 27" × 24"



3 DRAWERS
L3ABD-2407__ 18" × 21" × 24"
L3ABG-2407__ 18" × 27" × 24"



4 DRAWERS
L3ABD-2409__ 18" × 21" × 24"
L3ABG-2409__ 18" × 27" × 24"



1 DOOR / 1 SHELF
L3ABD-2412__ 18" × 21" × 24"
L3ABG-2412__ 18" × 27" × 24"



3 DRAWERS
L3ABD-2421__ 18" × 21" × 24"
L3ABG-2421__ 18" × 27" × 24"



3 DRAWERS
L3ABD-2415__ 18" × 21" × 24"
L3ABG-2415__ 18" × 27" × 24"



4 DRAWERS
L3ABD-2417__ 18" × 21" × 24"
L3ABG-2417__ 18" × 27" × 24"

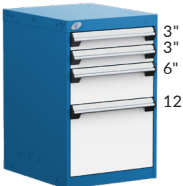


5 DRAWERS
L3ABD-2419__ 18" × 21" × 24"
L3ABG-2419__ 18" × 27" × 24"

28" HIGH (W × D × H)



4 DRAWERS
L3ABD-2801__ 18" × 21" × 28"
L3ABG-2801__ 18" × 27" × 28"



4 DRAWERS
L3ABD-2807__ 18" × 21" × 28"
L3ABG-2807__ 18" × 27" × 28"



2 DRAWERS
L3ABD-2809__ 18" × 21" × 28"
L3ABG-2809__ 18" × 27" × 28"



3 DRAWERS
L3ABD-2811__ 18" × 21" × 28"
L3ABG-2811__ 18" × 27" × 28"



4 DRAWERS
L3ABD-2819__ 18" × 21" × 28"
L3ABG-2819__ 18" × 27" × 28"



6 DRAWERS
L3ABD-2821__ 18" × 21" × 28"
L3ABG-2821__ 18" × 27" × 28"



3 DRAWERS
L3ABD-2803__ 18" × 21" × 28"
L3ABG-2803__ 18" × 27" × 28"



2 DOORS / 1 SHELF
L3ABD-2828__ 18" × 21" × 28"
L3ABG-2828__ 18" × 27" × 28"



1 DRAWER / 1 DOOR
L3ABD-2829__ 18" × 21" × 28"
L3ABG-2829__ 18" × 27" × 28"



4 DRAWERS
L3ABD-2835__ 18" × 21" × 28"
L3ABG-2835__ 18" × 27" × 28"

PRECONFIGURED MODELS – CABINETS

34" HIGH (W × D × H)



5 DRAWERS
 L3ABD-3403__ 18" × 21" × 34"
 L3ABG-3403__ 18" × 27" × 34"



4 DRAWERS
 L3ABD-3407__ 18" × 21" × 34"
 L3ABG-3407__ 18" × 27" × 34"



1 DRAWER / 1 DOOR / 1 SHELF
 L3ABD-3411__ 18" × 21" × 34"
 L3ABG-3411__ 18" × 27" × 34"



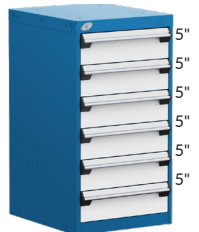
5 DRAWERS
 L3ABD-3415__ 18" × 21" × 34"
 L3ABG-3415__ 18" × 27" × 34"



5 DRAWERS
 L3ABD-3419__ 18" × 21" × 34"
 L3ABG-3419__ 18" × 27" × 34"



4 DRAWERS
 L3ABD-3421__ 18" × 21" × 34"
 L3ABG-3421__ 18" × 27" × 34"



6 DRAWERS
 L3ABD-3405__ 18" × 21" × 34"
 L3ABG-3405__ 18" × 27" × 34"



1 DOOR / 1 SHELF
 L3ABD-3436__ 18" × 21" × 34"
 L3ABG-3436__ 18" × 27" × 34"



6 DRAWERS
 L3ABD-3437__ 18" × 21" × 34"
 L3ABG-3437__ 18" × 27" × 34"

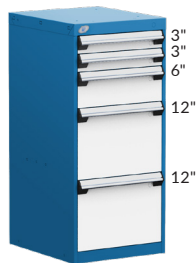


4 DRAWERS
 L3ABD-3447__ 18" × 21" × 34"
 L3ABG-3447__ 18" × 27" × 34"

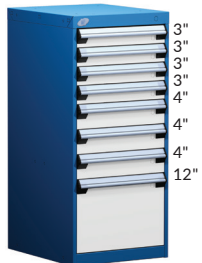
40" HIGH (W × D × H)



6 DRAWERS
 L3ABD-4005__ 18" × 21" × 40"
 L3ABG-4005__ 18" × 27" × 40"



5 DRAWERS
 L3ABD-4047__ 18" × 21" × 40"
 L3ABG-4047__ 18" × 27" × 40"



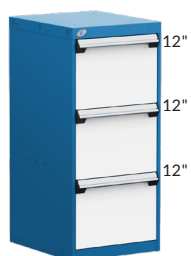
8 DRAWERS
 L3ABD-4011__ 18" × 21" × 40"
 L3ABG-4011__ 18" × 27" × 40"



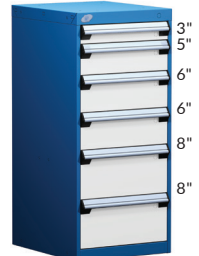
4 DRAWERS / 1 DOOR / 1 SHELF
 L3ABD-4015__ 18" × 21" × 40"
 L3ABG-4015__ 18" × 27" × 40"



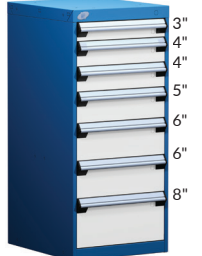
3 DRAWERS / 1 DOOR
 L3ABD-4017__ 18" × 21" × 40"
 L3ABG-4017__ 18" × 27" × 40"



3 DRAWERS
 L3ABD-4007__ 18" × 21" × 40"
 L3ABG-4007__ 18" × 27" × 40"



6 DRAWERS
 L3ABD-4025__ 18" × 21" × 40"
 L3ABG-4025__ 18" × 27" × 40"



7 DRAWERS
 L3ABD-4027__ 18" × 21" × 40"
 L3ABG-4027__ 18" × 27" × 40"



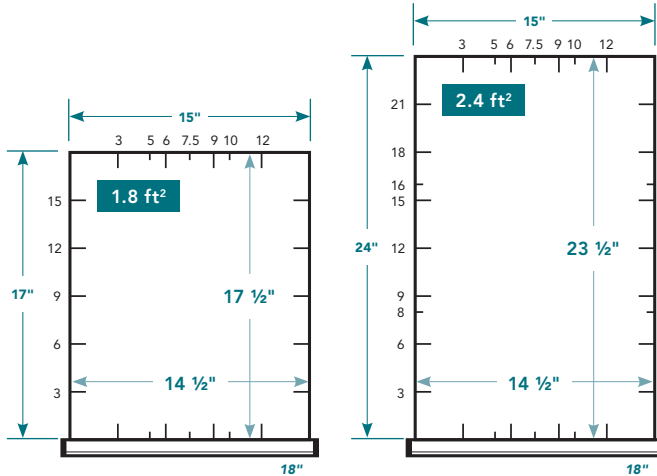
6 DRAWERS
 L3ABD-4029__ 18" × 21" × 40"
 L3ABG-4029__ 18" × 27" × 40"



6 DRAWERS
 L3ABD-4031__ 18" × 21" × 40"
 L3ABG-4031__ 18" × 27" × 40"

PRECONFIGURED MODELS – DRAWER COMPARTMENTS

DRAWER DIMENSIONS



CHOOSE DRAWERS FROM OUR SELECTION OF PRECONFIGURED COMPARTMENT LAYOUTS

00 for subdividing kit only
51 for a drawer in a cabinet with compartments

L __ BD-A0200 __

Drawer height :
 3", 4", 5", 6", 8" and 12"

36

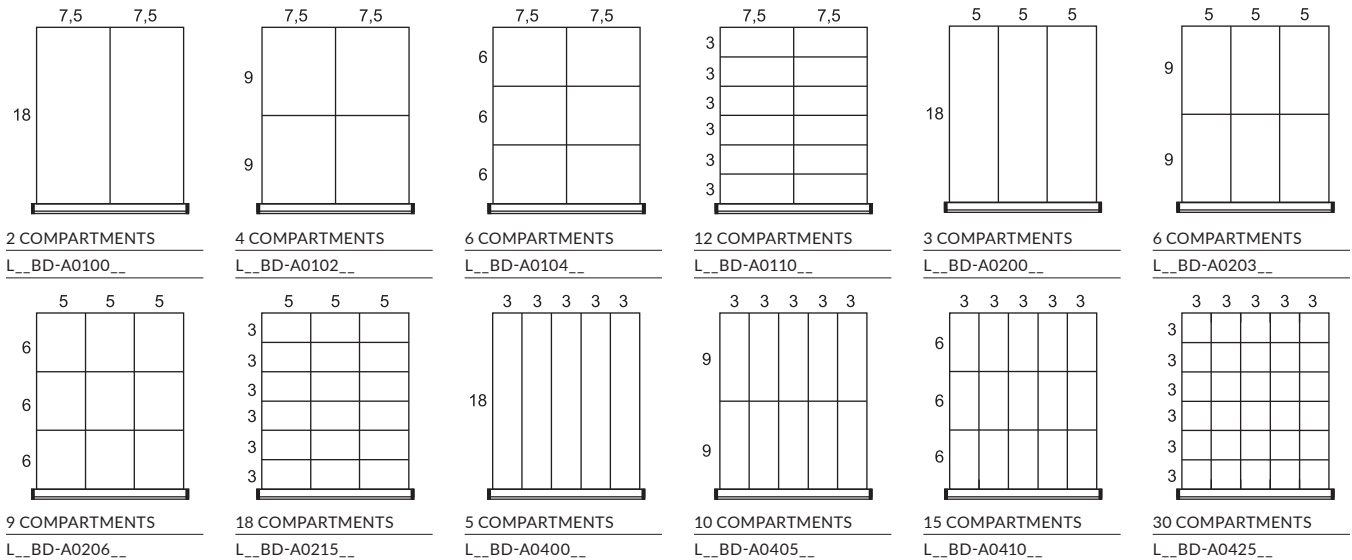
L3 Drawer lock
 B Lock-in mechanism

e.g., L51BD-A020008 L3 B

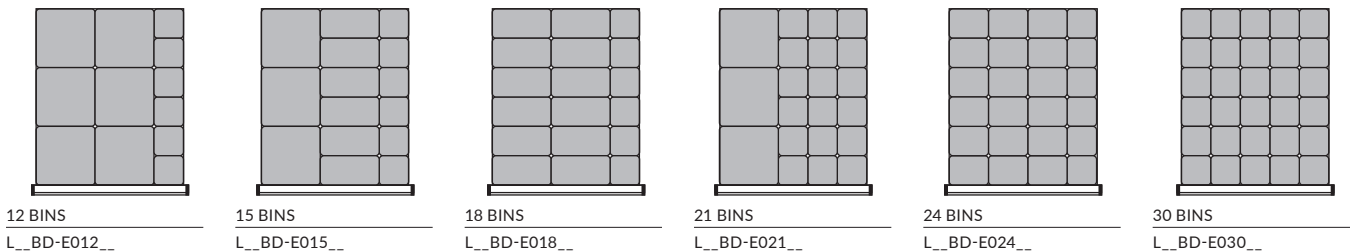
For an 18"W x 21"D drawer with compartments, 8" drawer height, an L3 lock and a lock-in mechanism on the drawer.

18" x 21" (W x D) DRAWERS

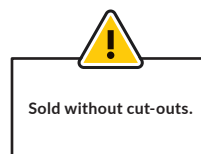
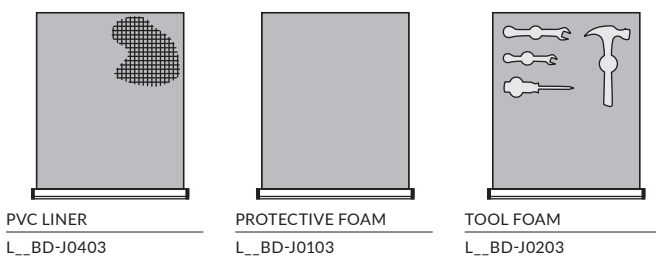
PARTITIONS AND DIVIDERS



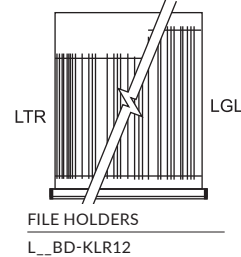
PLASTIC BINS



FOAM/LINERS



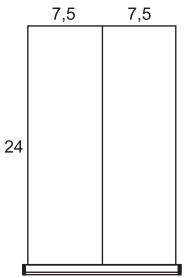
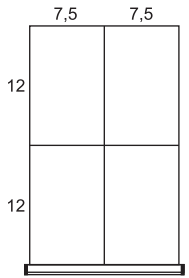
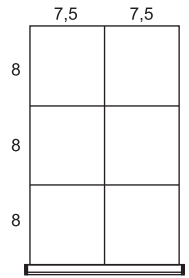
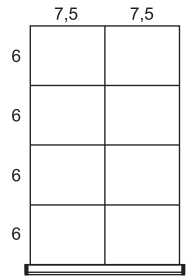
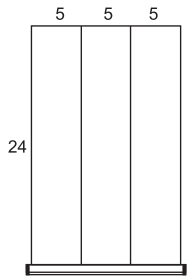
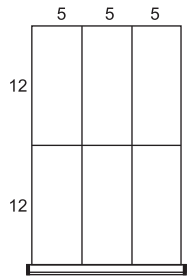
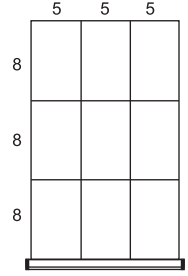
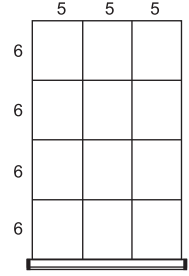
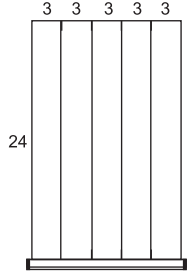
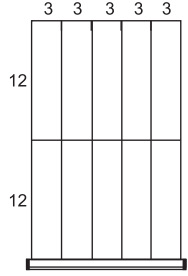
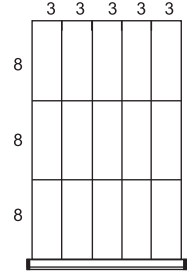
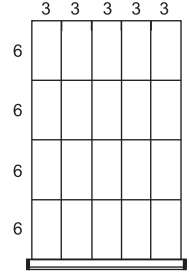
FILE HOLDERS



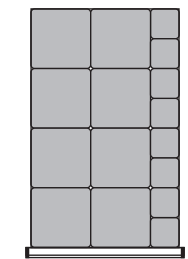
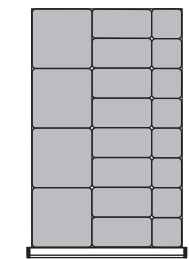
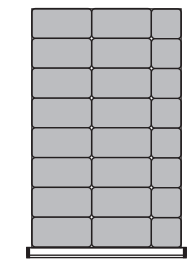
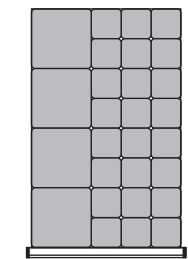
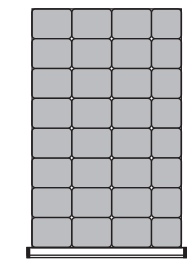
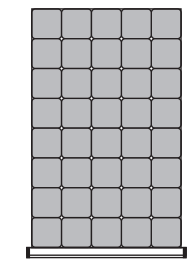
PRECONFIGURED MODELS – DRAWER COMPARTMENTS

18" x 27" (W x D) DRAWERS

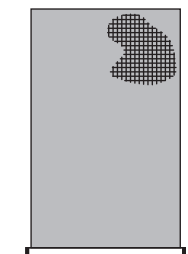
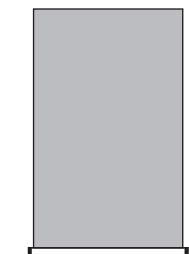
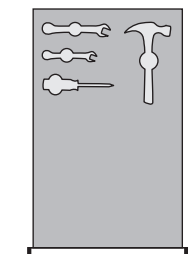
PARTITIONS AND DIVIDERS

 <p>7,5 7,5 24</p>	 <p>7,5 7,5 12 12 24</p>	 <p>7,5 7,5 8 8 8 24</p>	 <p>7,5 7,5 6 6 6 6 24</p>	 <p>5 5 5 24</p>	 <p>5 5 5 12 12 24</p>
<p>2 COMPARTMENTS L__BG-A0100__</p>	<p>4 COMPARTMENTS L__BG-A0102__</p>	<p>6 COMPARTMENTS L__BG-A0104__</p>	<p>8 COMPARTMENTS L__BG-A0106__</p>	<p>3 COMPARTMENTS L__BG-A0200__</p>	<p>6 COMPARTMENTS L__BG-A0203__</p>
 <p>5 5 5 8 8 8 24</p>	 <p>5 5 5 6 6 6 6 24</p>	 <p>3 3 3 3 3 24</p>	 <p>3 3 3 3 3 12 12 24</p>	 <p>3 3 3 3 3 8 8 8 24</p>	 <p>3 3 3 3 3 6 6 6 6 24</p>
<p>9 COMPARTMENTS L__BG-A0206__</p>	<p>12 COMPARTMENTS L__BG-A0209__</p>	<p>5 COMPARTMENTS L__BG-A0400__</p>	<p>10 COMPARTMENTS L__BG-A0405__</p>	<p>15 COMPARTMENTS L__BG-A0410__</p>	<p>20 COMPARTMENTS L__BG-A0415__</p>


PLASTIC BINS

					
<p>16 BINS L__BG-E016__</p>	<p>20 BINS L__BG-E020__</p>	<p>24 BINS L__BG-E024__</p>	<p>28 BINS L__BG-E028__</p>	<p>32 BINS L__BG-E032__</p>	<p>40 BINS L__BG-E040__</p>

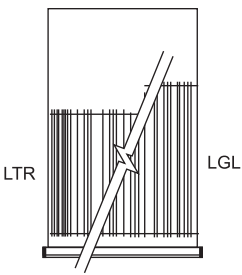
FOAM/LINERS

		
<p>PVC LINER L__BG-J0403</p>	<p>PROTECTIVE FOAM L__BG-J0103</p>	<p>TOOL FOAM L__BG-J0203</p>

FILE HOLDERS



Sold without cut-outs.



LTR LGL

FILE HOLDERS
L__BG-KLR12

SECURITY MECHANISMS

KEY LOCK / SAFETY HASP FOR CABINET L3 / LP



352-353

- Locks all drawers in the cabinet at the same time
- Easy to retrofit
- The drawer layout can be changed without touching the locking mechanism
- To order a lock, add L3 to the cabinet housing or preconfigured model number e.g., LA30-182134L3
- To order a safety hasp, add LP to the cabinet housing product number e.g., LA30-182134LP
- For replacement parts or to retrofit this mechanism, [see pages 352-353](#)

PRODUCT NO.

L3	Key lock
LP	Safety hasp

DRAWER LOCK L3



352

- Two keys provided with each lock
- Compatible with all drawer dimensions
- The mechanism (covered by a galvanized steel box) requires 3"W x 1"D space inside the drawer
- To order: Add L3 to the product number for the drawer or preconfigured compartment layout e.g., LF31-182106L3
- For replacement parts or to retrofit this mechanism, [see page 352](#)

PRODUCT NO.

L3

NOTE: An LF91 security panel must be ordered to block access between two drawers and if two different user access rights are required.

DIGITAL LOCK FOR CABINET L50



354

- Electronically locks all drawers in the cabinet at the same time
- No key required
- Up to 20 different users can be programmed
- 4-8 digit access codes
- Simplifies access management to drawers
- To order a lock, add L50 to the cabinet housing or preconfigured model number e.g., LA30-182134L50
- For replacement parts or to retrofit this mechanism, [see page 354](#)

PRODUCT NO.

L50

SMART LOCK FOR CABINET L100



355

- Handy unlocking via a transponder or smartphone
- User-friendly and intuitive
- No key required
- Easy and comprehensive management
- To order a lock, add L100 to the cabinet housing or preconfigured model number e.g., LA30-182134L100
- For replacement parts or to retrofit this mechanism, [see page 356](#)

PRODUCT NO.

L50

NOTE: NFC transponders are not included with the lock, they must be ordered separately (pack of 5). [See page 356.](#)

LOCK-IN MECHANISM B



- Activated with the right hand by sliding the mechanism with thumb
- The drawer closes without having to reactivate the sliding mechanism
- Stops drawers from opening on their own
- Easy to retrofit
- To order: Add B to the product number for the drawer or preconfigured compartment layout e.g., LF31-182106B
- For replacement parts or to retrofit this mechanism, order an LY01 and a LY02

PRODUCT NO.

B

KEY LOCK / SAFETY HASP FOR DOORS L3/LP



352-353

- Two keys provided with each lock
- To order a key lock, add L3 to the door product number e.g., LB30-1812L3
- To order a safety hasp, add LP to the door product number e.g., LB30-1812LP
- For replacement parts or to retrofit this mechanism, [see pages 352-353](#)

PRODUCT NO.

L3	Key lock
LP	Safety hasp

NOTE: An LF91 security panel must be ordered to block access between two doors and if two different user access rights are required.

ACCESSORIES

DIGITAL LOCK FOR DOORS

L50



- Electronically locks a cabinet door
- No key required
- Up to 20 different users can be programmed
- 4-8 digit access codes
- To order: Add L50 to the door product code, e.g. LB30-1812L50



354

PRODUCT NO.
L50

NOTE: Cannot be retrofitted.

SMART LOCK FOR DOORS

L100



- Handy unlocking via a transponder or smartphone
- User-friendly and intuitive
- No key required
- Easy and comprehensive management
- To order: Add L100 to the door product code, e.g. LB30-1812L100



355

PRODUCT NO.
L100

NOTES: Cannot be retrofitted.

NFC transponders are not included with the smart lock, they must be ordered separately (pack of 5). See page 356.

VERTICAL SECURITY BAR

LB10



- Locks all drawers in a cabinet with a key or padlock
- The key or safety hasp is located at the top of the bar to facilitate access
- Covers a bank of drawers from 20" to 36" high
- Easy to assemble
- Installs on the right-hand side
- To order: Specify the type of lock required, LP for a safety hasp or L3 for a key lock

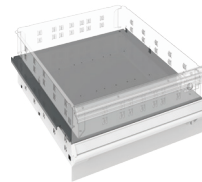


352-353

PRODUCT NO.	CABINET HEIGHT	VERTICAL SECURITY BAR HEIGHT
LB10-24__A	24"	20"
LB10-28__A	28"	24"
LB10-30__A	30"	26"
LB10-34__A	34"	30"
LB10-40__A	40"	36"

SECURITY PANEL

LF91



- Divides the cabinet up for use by more than one user
- Adjustable in 1" increments c/c
- Must be ordered to:
 - Block access between doors
 - Block access when a door with lock is installed under a drawer
 - Block the space left when a door is installed above a drawer
- Two security panel versions available for housings with or without a central locking mechanism
- Galvanized steel
- To order: Specify the housing depth, 21" or 27"

PRODUCT NO.	FOR LA30
LF91-18__01	With L3/LP on the housing
LF91-18__02	Without L3/LP on the housing

DRAWER AND HANDLE ACCESSORIES

HANDLE PROTECTOR

LF70



- Clips onto the drawer handle
- Made of transparent plastic
- Protects identification labels from dust, grease and dirt
- Easy to remove

PRODUCT NO.
LF70-18

HANDLE LABELS

LF71



- Labels to be attached to handles under the handle protector (LF70)
- 30 labels per page (10 pages)
- Print your own labels
- Download the electronic template (MS Word) from the rousseau.com website under the "Resources" tab to create labels or scan this QR code.

PRODUCT NO.
LF71-425075



HANGING FILE BARS

LG31



- For storing hanging files
- Fits both letter and legal sizes
- For 12"H drawers

PRODUCT NO.
LG31-18

PVC DRAWER LINER

LG40

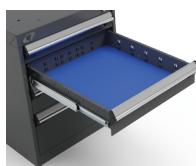


- Protects items stored in the drawer
- Non-slip material
- Can be installed under partitions and dividers
- Thickness: 3/32"

PRODUCT NO.	FOR DRAWER
LG40-1821-01	18"W × 21"D
LG40-1827-01	18"W × 27"D

PROTECTIVE FOAM

LG41



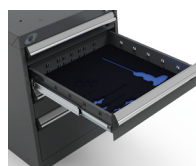
- Protects items stored in the drawer
- Includes one piece of 1/4"-thick blue foam

PRODUCT NO.	FOR DRAWER
LG41-1821-01	18"W × 21"D
LG41-1827-01	18"W × 27"D

NOTE: Partitions and dividers cannot be installed in the same drawer as this foam.

TOOL FOAM

LG42



- Oil resistant and non-absorbent
- Includes one piece of 1/4"-thick blue foam
- Includes one piece of 1/2"-thick black foam
- Sold without cut-outs. Can be cut with a utility knife

PRODUCT NO.	FOR DRAWER
LG42-1821-01	18"W × 21"D
LG42-1827-01	18"W × 27"D



FRONT TO BACK PARTITION

LG02



- Divides the drawer along its depth
- Clip system locks dividers in place
- Galvanized steel
- Compatible with RG10 dividers, which can be used to make smaller compartments between each partition
- Compatible with plastic bins and PVC drawer liners

NOMINAL DRAWER HEIGHT (ACTUAL)	NOMINAL DRAWER DEPTH (ACTUAL)	
	21" (18")	27" (24")
3" (1 1/8"H)	LG02-2103	LG02-2703
4" (2 5/8"H)	LG02-2104	LG02-2704
5" (3 3/8"H)	LG02-2105	LG02-2705
6" (4 5/8"H)	LG02-2106	LG02-2706
8" (6 3/8"H)	LG02-2108	LG02-2708
12" (8 3/8"H)	LG02-2110	LG02-2710

PLASTIC BIN

RG20



- For easier storing, moving and managing of small parts
- Lightweight and durable
- For 3"H and 4"H drawers
- 45° angled rim for easy identification of bin contents and removal of bins
- Compatible with partitions and dividers
- 6" plastic bins can be subdivided

DIMENSIONS			PRODUCT NO.		
W	D	H	BIN	PARTITION	DIVIDER
3"	3"	2"	RG20-030302	-	-
4"	3"	2"	RG20-040302	-	-
6"	3"	2"	RG20-060302	RG22-0302	-
6"	6"	2"	RG20-060602	RG22-0602	RG24-0602
3"	3"	3"	RG20-030303	-	-
4"	3"	3"	RG20-040303	-	-
6"	3"	3"	RG20-060303	RG22-0303	-
6"	6"	3"	RG20-060603	RG22-0603	RG24-0603

NOTE: 2"H bins = 1 1/2" actual height
3"H bins = 2 1/2" actual height

DRAWER DIVIDER

RG10



- Dividers clip in place
- 45° angled edge for easy identification of compartment contents
- Adjustable in 3" increments (c/c)
- Galvanized steel

NOMINAL DIVIDER WIDTH	NOMINAL DRAWER HEIGHT (ACTUAL)					
	3" (1 1/8"H)	4" (2 5/8"H)	5" (3 3/8"H)	6" (4 5/8"H)	8" (6 3/8"H)	12" (8 3/8"H)
3"	RG10-03003	RG10-03004	RG10-03005	RG10-03006	RG10-03008	RG10-03010
5"	RG10-05003	RG10-05004	RG10-05005	RG10-05006	RG10-05008	RG10-05010
6"	RG10-06003	RG10-06004	RG10-06005	RG10-06006	RG10-06008	RG10-06010
7 1/2"	RG10-07503	RG10-07504	RG10-07505	RG10-07506	RG10-07508	RG10-07510
9"	RG10-09003	RG10-09004	RG10-09005	RG10-09006	RG10-09008	RG10-09010
10"	RG10-10003	RG10-10004	RG10-10005	RG10-10006	RG10-10008	RG10-10010
12"	RG10-12003	RG10-12004	RG10-12005	RG10-12006	RG10-12008	RG10-12010
15"	RG10-15003	RG10-15004	RG10-15005	RG10-15006	RG10-15008	RG10-15010

CABINET TOPS

RESISTANT ACRYLIC/PVC PLASTIC LAMINATED TOP



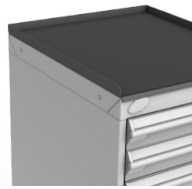
WS08



- Ideal for assembly stations or for applications using solvents, oils or other chemical products
- Color: grey
- Featuring softened edges, with 1/8" PVC edge banding around the entire perimeter for a clean and durable finish
- Premium-quality laminated top
- Excellent chemical resistance (can be in prolonged contact with a substance)
- Superior abrasion resistance compared with standard laminated tops
- Superior impact resistance compared with standard laminated tops
- Attractive appearance
- Thickness: 1 1/2"

STEEL TOP WITH RUBBER MAT

RC32



- Non-slip rubber surface
- Includes edges on the sides and back
- Height: 1"

STAINLESS STEEL TOP

RC35



- Acts as a work surface and protects the cabinet from impacts
- Particle board top with stainless steel cover (#4 brushed finish)
- Excellent corrosion and chemical resistance
- Top complies with CARB regulations on formaldehyde emissions
- Includes welded corners for an attractive appearance
- Thickness: 1 3/4"

LAMINATED HARDWOOD TOP

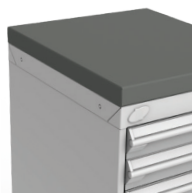
WS14



- Top for general industrial applications
- Made from varnished hardwood slats
- Includes a 90° radius front edge for extra comfort
- High impact resistance
- Attractive appearance
- Thickness: 1 3/4"

PAINTED STEEL TOP

RC37



- Acts as a work surface and protects the cabinet from impacts
- Particle board top with painted steel cover
- Top complies with CARB regulations on formaldehyde emissions
- Includes welded corners for an attractive appearance
- Thickness: 1 3/4"

PLASTIC LAMINATED TOP



WS16



- Top for general use. Ideal for assembly stations, quality control and packaging
- Colors: Default is white. For another color, add -BA for black or -GB for gray to the end of the product number, e.g., WS16-6024A-BA for a black top
- Featuring softened edges, with 1/8" PVC edge banding around the entire perimeter for a clean and durable finish
- Attractive appearance
- Easy to clean
- Thickness: 1 1/2"



DISSIPATIVE TOP



WS17



- Top for electronics tasks. Ideal for electronics inspection or assembly stations
- Color: white
- Featuring softened edges, with 1/8" PVC edge banding around the entire perimeter for a clean and durable finish
- Attractive appearance
- Easy to clean
- Dissipates electrical charges that can damage electronic components
- The resistance point to point and point to ground is between 10⁶ and 10⁹ Ω
- In accordance with the standard ESD-S4 1-1997
- Thickness: 1 1/2"

NOTE: Grounding accessories are sold separately, see page 35.

DIMENSIONS		CABINET TOPS						
W	D	ACRYLIC/PVC PLASTIC LAMINATED	LAMINATED HARDWOOD	PLASTIC LAMINATED	DISSIPATIVE	STEEL WITH RUBBER MAT	STAINLESS STEEL	PAINTED STEEL
18"	21"		WS14-1821A	WS16-1821-__		RC32-1821-01	RC35-1821	RC37-1821
	27"		WS14-1827A	WS16-1827-__		RC32-1827-01	RC35-1827	RC37-1827
36"	21"	WS08-3621	WS14-3621A	WS16-3621-__	WS17-3621	RC32-3621-01	RC35-3621	RC37-3621
	27"	WS08-3627	WS14-3627A	WS16-3627-__	WS17-3627	RC32-3627-01	RC35-3627	RC37-3627
54"	21"	WS08-5421	WS14-5421A	WS16-5421-__	WS17-5421	RC32-5421-01	RC35-5421	RC37-5421
	27"	WS08-5427	WS14-5427A	WS16-5427-__	WS17-5427	RC32-5427-01	RC35-5427	RC37-5427

ESD PROTECTION

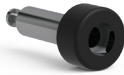
ESD PROTECTION KIT FOR CABINETS

EA91-01



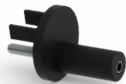
Grounding wrist strap

EA96-01



Wrist strap single socket

EA98-01



Grounding plug

EA99-01



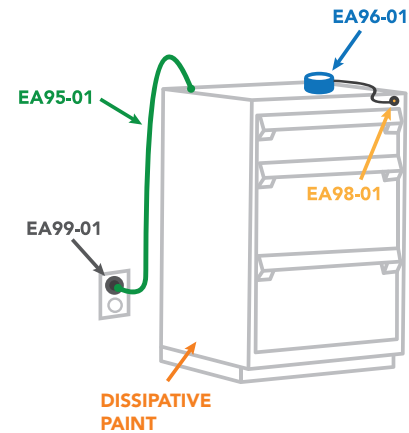
Grounding cord

EA95-01

- Basic kit for grounding the operator and cabinet
- Kit includes an EA96 wrist strap, EA98 wrist strap socket, EA95 grounding cord, and EA99 grounding plug
- Grounding wrist strap includes a 6' cord with 1MΩ resistance

PRODUCT NO.

EA91-01

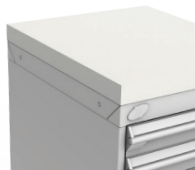


CONDUCTIVE PLASTIC BINS



297

DISSIPATIVE TOP



34

DISSIPATIVE PAINT

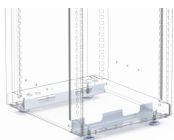


- Special paint dissipates electric charges (Black 090)

NOTE: Contact Customer Service for ESD paint prices.

LEVELING GLIDE KIT

LA74

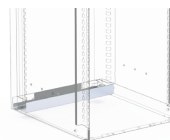


- Adjusts the height of cabinets 1 1/8" to 2" on uneven floor surfaces
- Can be installed under cabinets with or without bases
- Includes two brackets and four leveling glides

PRODUCT NO.	WIDTH
LA74-1801	18"

FLOOR ANCHORING KIT

LA76



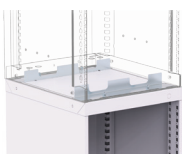
- For anchoring a cabinet (without base) to the floor
- Includes one bolt for concrete floors

PRODUCT NO.	WIDTH
LA76-1801	18"

STACKING CABINETS

STACKING KIT

LA78



- For stacking an L compact cabinet on top of another
- Installs on the bottom of the top cabinet
- Includes two brackets and anchoring hardware

PRODUCT NO.	WIDTH
LA78-1801	18"

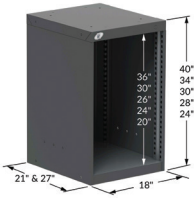


L3XJD-2802L3

HOUSINGS

L COMPACT CABINET HOUSING

LA30



352-356

- Drawers, shelves and doors can be installed in the housing
- The housing units include knockouts:
 - On the top: for stacking an LD75 Housing for Drawer Unit or another LA30 L Compact Cabinet Housing. For the latter, order an LA78 Stacking Kit
 - On the sides and back: for assembling cabinets side to side and back to back, or for installing under a work surface. For the latter, order RA70 Cabinet Attachment Bars
- A 2" painted or stainless steel base can be added to make cabinet heights of 26", 30", 32", 36" and 42"
- A 4" painted or stainless steel base can be added to make cabinet heights of 28", 32", 34", 38" and 44"
- Four types of lock available: L3 for a key lock, LP for a safety hasp, L50 for an digital lock or L100 for a smart lock

PRODUCT NO.	W×D×H
LA30-182124__	18"×21"×24"
LA30-182128__	18"×21"×28"
LA30-182130__	18"×21"×30"
LA30-182134__	18"×21"×34"
LA30-182140__	18"×21"×40"
LA30-182724__	18"×27"×24"
LA30-182728__	18"×27"×28"
LA30-182730__	18"×27"×30"
LA30-182734__	18"×27"×34"
LA30-182740__	18"×27"×40"

NOTE: NFC transponders are not included with the smart lock, they must be ordered separately (pack of 5). See page 356.

L COMPACT DRAWER

LF31



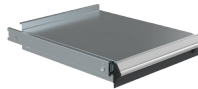
352

- 100lb. load capacity, 100% extension
- Vast choice of accessories available to customize the drawer to your storage needs
- Precision ball bearing drawer slides included
- Easy hook-on assembly
- For preconfigured drawer compartment layouts, see pages 29-30
- Drawer heights available: 03", 04", 05", 06", 08 and 12"
- To order: Add the drawer height required to the product number, e.g., LF31-182106
- To order a drawer lock, add L3 to the drawer product number, e.g., LF31-182704L3. The mechanism (covered by a galvanized steel box) requires 3"W×1"D space inside the drawer
- To order a drawer lock-in mechanism, add "B" to the drawer product number, e.g., LF31-182103B

PRODUCT NO.	W×D	INSIDE DIM.
LF31-1821_____	18"×21"	15"×18"
LF31-1827_____	18"×27"	15"×24"

L 3-SIDES ACCESS ROLL-OUT SHELF

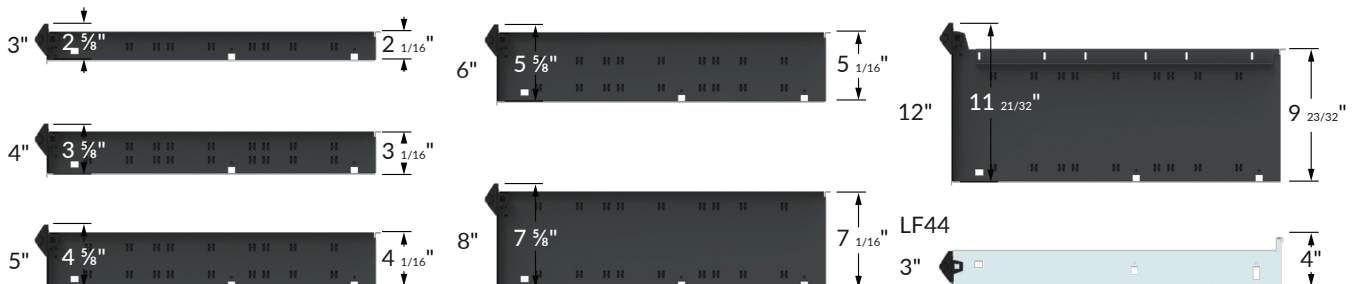
LF44



- 100lb. load capacity, 100% extension
- Precision ball bearing drawer slides included
- Easy hook-on assembly
- Galvanized steel top with 1½"H back
- Total height: 4"

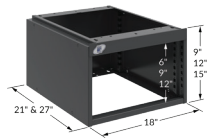
PRODUCT NO.	W×D	INSIDE DIM.
LF44-1821	18"×21"	15"×18"
LF44-1827	18"×27"	15"×24"

DRAWER AND ROLL-OUT SHELF DIMENSIONS



HOUSING FOR DRAWER UNIT

LD75



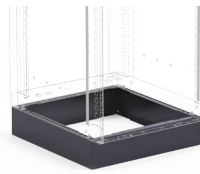
- Installs on a cabinet or under a work surface
- 100lb. load capacity for each drawer in the unit, max. 175lb. per unit
- Compatible with LF31 compact drawers (not included)
- To order: Specify the drawer unit housing depth required, 21" or 27"

PRODUCT NO.	INTERIOR DIM.
LD75-18__09	6"
LD75-18__12	9"
LD75-18__15	12"

NOTE: Not compatible with the ElevaTek adjustable workstations.

CABINET BASE

LA85 / LA86



- Painted steel: LA85
- Stainless steel: LA86
- Heights available: 2" and 4"
- Recessed 2" from the front to create more space for feet
- Compatible with LA74 Leveling Glide Kit
- To order: Specify the type of steel required, e.g., LA86-182704 for an 18"W x 27"D x 4"H stainless steel base

PRODUCT NO.	W x D x H
LA__-182102	18" x 21" x 2"
LA__-182104	18" x 21" x 4"
LA__-182702	18" x 27" x 2"
LA__-182704	18" x 27" x 4"

NOTE: Not compatible with LA76 Floor Anchoring Kit, LA78 Stacking Kit and casters

INTEGRATED DOOR

LB30



- Black plastic recessed handle
- The doors are factory installed with hinges on the left. They can be installed on the right upon request
- An LB24 Adjustable Shelf must be ordered as a storage surface for doors installed above a drawer or another door
- Four types of lock available: L3 for a key lock, LP for a safety hasp, L50 for an digital lock or L100 for a smart lock



352-356

PRODUCT NO.	W x H
LB30-1812__	18" x 12"
LB30-1818__	18" x 18"
LB30-1820__	18" x 20"
LB30-1824__	18" x 24"
LB30-1826__	18" x 26"
LB30-1830__	18" x 30"
LB30-1836__	18" x 36"

NOTE: NFC transponders are not included with the smart lock, they must be ordered separately (pack of 5). See page 356.

SHELF

LB24

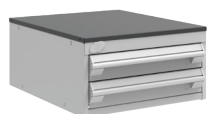


- For storage of bulky items
- Includes side and back edges
- Height can be adjusted in 1" increments c/c
- Up to 100lb. load capacity, evenly distributed
- Two shelf versions available for housings with or without a central locking mechanism
- Galvanized steel
- To order: Specify the housing depth, 21" or 27"

PRODUCT NO.	FOR LA30
LB24-18__01	With L3/LP/L50/L100 on the housing
LB24-18__02	Without L3/LP/L50/L100 on the housing

DRAWER UNIT COVER

LD76



- Covers the top of an LD75 Housing for Drawer Unit when it is installed on a work surface

PRODUCT NO.	W x D
LD76-1821	18" x 21"
LD76-1827	18" x 27"

