



# **NUVO RACK**

**REPAIR • REPLACE • RECONFIGURE**



# **Pedlex**

**TURNKEY WAREHOUSING SYSTEMS**

# INNOVATING Pallet Racking Systems

**REPAIR, REPLACE, RECONFIGURE with**

# NUVORACK

*The Nuvorack versions of our pallet racks*

## PRACTICAL

Easy to ship, deliver, and assemble. Initial configuration can be easily modified and reorganized.

## FAST

Bolted pallet racks provide easy handling, which means we can respond to requests for installations, repairs and structural modifications quicker than ever.

## SAFE

Sometimes, lift trucks accidentally collide with ladders, guardrails and uprights. Even when these collisions seem harmless at first, they can result in long-term instability or damaged parts, eventually leading to premature wear and increased safety risks.

Bolted systems allow for the easy replacement of affected

## COST-EFFECTIVE

These benefits of convenience and security also result in lower costs related to interventions, handling, and maintenance.



A LARGE SELECTION IN STOCK

### STANDARD COLORS



SUPER BLUE 300



ORANGE



DARK GRAY



DARK GREEN



MEDIUM BLACK



OFF WHITE



BARN RED



SAFETY YELLOW

### CHOICE OF COLORS:



ROYAL BLUE



LIGHT GRAY



SKY WHITE



LIGHT BLUE



MEDIUM BLUE



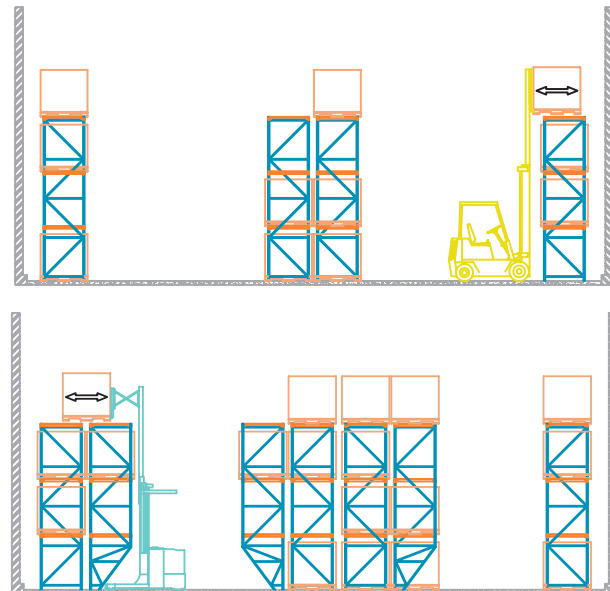
DARK BLUE



# PALLET RACKING SYSTEMS

## SINGLE AND DOUBLE DEPTH PALLET RACKING SYSTEM

The most prevalent type of pallet racking system in the industry.



Forklift aisles are configured between back-to-back rows of shelves.

Its advantages:

- Economical
- Excellent selectivity and versatility
- Low density single depth
- High density double depth

***“CUSTOM MADE” SOLUTIONS ARE OUR SPECIALTY - WE FIND TURNKEY SOLUTIONS THAT FIT YOUR STORAGE NEEDS***

## SINGLE DEPTH PALLET RACKING SYSTEM WITH NARROW AISLES

Same as above, but using a narrow access forklift. This allows for reduced aisle widths and optimized use of storage space.



## STRUCTURAL STEEL PALLET RACK\*

Structural systems are ideal solutions when looking for a high performance storage system in an environment subject to frequent forklift collisions or for a tall system required to support high-density loads.

The beams are secured using 4 grade 5 nuts and bolts, 1/2 in x 1 in.

Its advantage:

- Superior resistance to forklift impacts.



\* Not available with the NUVORACK system.



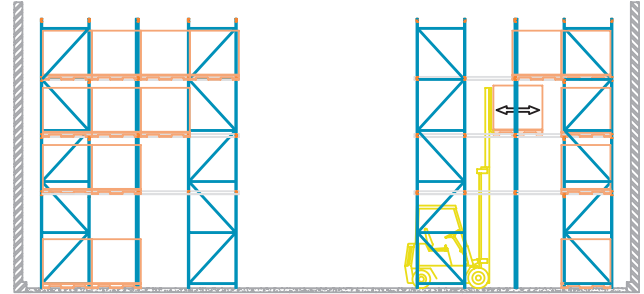
# HEAVY DUTY,



## STATIC ACCUMULATION SYSTEM (DRIVE-IN)

This storage system includes a series of tunnels, in which the pallets are supported by steel beams; forklifts access the various tunnels to load or unload pallets.

- Economical
- High density
- Poor selectivity



***OUR TEAM OF PROFESSIONALS HAS THE BEST SOLUTION  
TO HELP YOU BETTER MANAGE YOUR SPACE.***

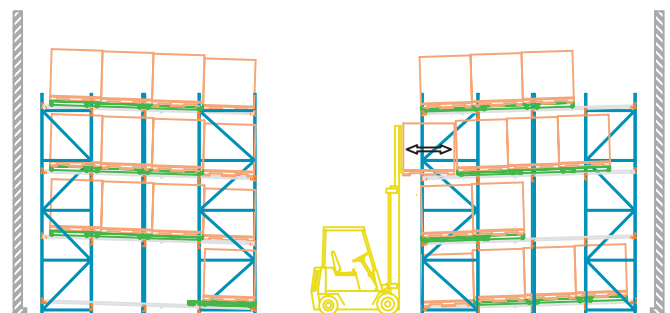
## REVERSE GRAVITY SYSTEM (PUSH BACK)

System in which each level is composed of individual movable trolleys. To load a level, forklift operators place the first pallet on the trolley, then pushes the second pallet against the first to move the trolley and free up a second trolley to receive the pallet, and so on until loading is complete.

To proceed with unloading, forklift operators unload the first pallet and, by sliding on the rails, the other individual trolleys advance by one spot, and so on until unloading is complete.

Its advantages:

- Good selectivity
- Excellent density

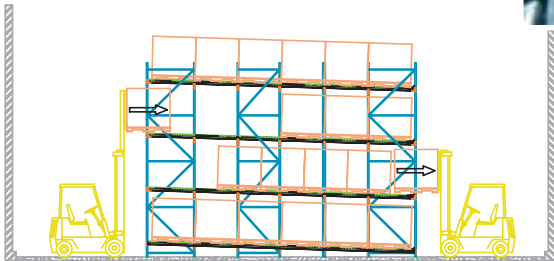




# FUNCTIONAL, SUPERIOR QUALITY DESIGN

## DYNAMIC ACCUMULATION SYSTEM (PALLET FLOW)

- High-density
- Excellent to ensure good stock rotation (FIFO)



## ACCESSORIES

### Protective wire mesh



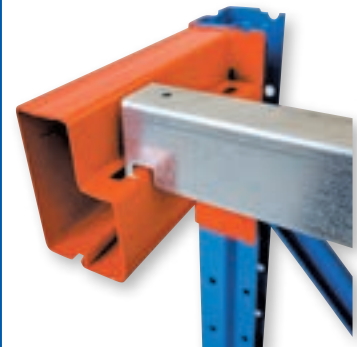
### Wire mesh shelves – Security bars



### End aisle protector 5" angle and 12" high dome



### Tubular beam



Shoulder beam



Steel upright protector



Rack Armor upright protector

### Security bar for tubular beam



# DESIGN - DEVELOPMENT - INSTALLATION



## ROUSSEAU METAL

THINK INNOVATION, DURABILITY, QUALITY

### INDUSTRIAL STORAGE SYSTEMS



## MORE PEDLEX PRODUCTS



Choose Pedlex for turnkey solutions, from design to installation  
*Ask for our product catalogue.*



10 000 boul. du Golf, Montreal (Anjou)  
Quebec, H1J 2Y7



Phone: 514 324-5310 • Fax: 514 324-1849 • Toll-free: 1-888-PEDLEX-9 (733-5399)  
E-mail: [info@pedlex.com](mailto:info@pedlex.com)

**WWW.PEDLEX.COM**