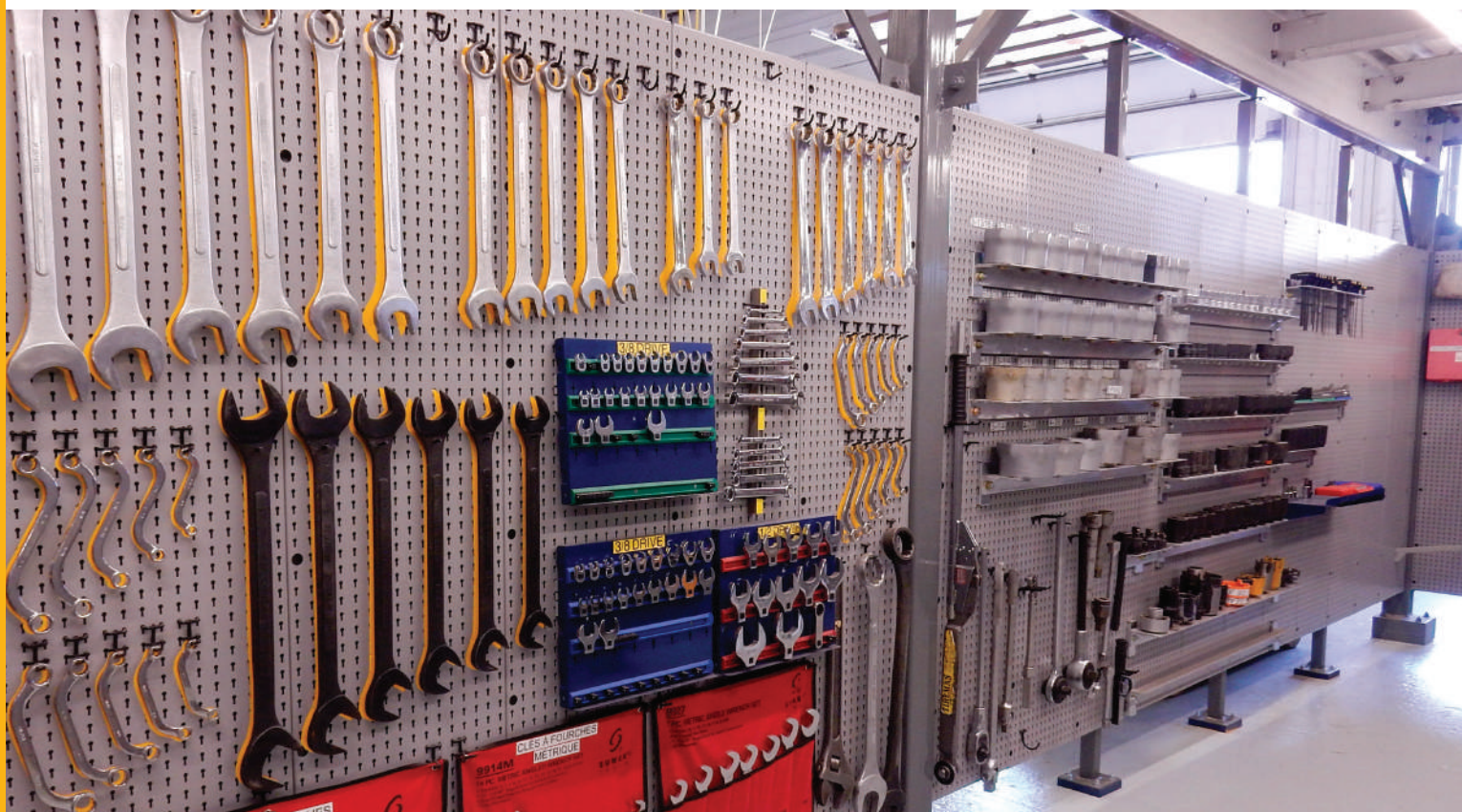


## 5S AND WALL-MOUNTED STORAGE



### 5S AND WALL-MOUNTED STORAGE

Many Rousseau products are available in a wall-mounted version to help you organize and maximize your available space while keeping floors clear. Wall-mounting makes cleaning easier and everything you need is still within easy reach.

Over the years, Rousseau has also developed many different storage solutions to meet the standards of the 5S methodology. The aim of this Japanese technique is to continuously improve the work environment. Its name comes from the same first letter used to illustrate its five fundamental principles: Sort, Set in Order, Shine, Standardize and Sustain. It is designed to optimize organization and efficiency of the work environment by ensuring each tool is in the right place, easy to find and well identified.

A choice of 20 standard colors is also available to color code your 5S management.



## ORGANIZATIONAL WALL STRUCTURES

## WALL-MOUNTED MULTI-PURPOSE UPRIGHT



EM35

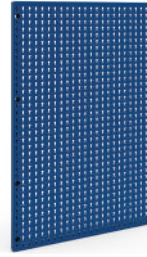


- Capacity of 125 lb/post (provided the wall and wall anchoring are sufficiently strong)
- Perforated on the front faces in 1" increments c/c for optimal placement of accessories
- Wall anchoring hardware not included
- Compatible accessories:
  - Tilttable shelf EA20
  - EA08 / 10 / 11 / 12 / 14 / 16 / 17 shelves
  - Plastic box holder EA32
  - Wire spool holder EA31
  - Adapter E NC53 (with tool holders NC10 and NC12)

PRODUCT NO.	HEIGHT
EM35-72	72"

## WALL-MOUNTED UTILITY PANEL

WM57 / WM5B



- Painted steel utility panel: WM57
- Stainless steel utility panel: WM5B
- For storing small- and medium-sized tools with visual identification close to the user or in a store
- Completely flat surface for easy visual identification with photos, P-touch, stickers or WM91 vinyl decals
- The panels overlap to anchor in the same anchoring zones
- Two widths available: 16" (16 holes) and 24" (24 holes)
- The installation hardware is between two panels for easy assembly
- 16"W: Vertical installation and conforms with architectural standards with uprights spaced 16" c/c
- Compatible with WM9F, WM9G, WM9H, WM9J and WM9L light-duty hooks, and WM9A and WM9B heavy-duty hooks
- Compatible with WM9C bin rails, WM9D can holders, WM9M and WM9N hooks, WM9Q tool holders, WM9P spool and roll holders, WM9R hammers support, WM9S document holder, and EA28 and WM21 shelves, [see page 98](#)
- To order: Specify the height required: 18", 24", 36", 48" or 72"

PRODUCT NO.	FINISH	WIDTH
WM57-16_	Painted Steel	16"
WM57-24_	Painted Steel	24"
WM5B-16_	Stainless Steel	16"
WM5B-24_	Stainless Steel	24"

## FINISHING PANEL

WM58 / WM5D



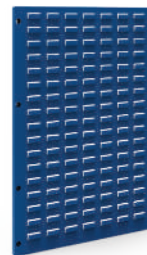
- Painted steel panel: WM58
- Stainless steel panel: WM5D
- Finishing panel for the end of a wall panel layout
- Quick and easy installation
- Creates a neater appearance
- To order: Specify the type of steel required, e.g., WM58-36

PRODUCT NO.	HEIGHT
WM_-18	18"
WM_-24	24"
WM_-36	36"
WM_-48	48"
WM_-72	72"

NOTE: Compatible with a wall panel of the same height, e.g., WM58-36 is only compatible with WM57-1636.

## WALL-MOUNTED PLASTIC BIN PANEL

WM5C



- Holds RG20 plastic bins, [see page 256](#)
- Compatible with all commercially available brands of plastic bins with a hanging lip
- Quick and easy installation
- The panels overlap to anchor in the same anchoring zones
- Two widths available: 16" and 24"
- 16"W: Vertical installation and conforms with architectural standards with uprights spaced 16" c/c
- To order: Specify the height required: 18", 24", 36", 48" or 72"

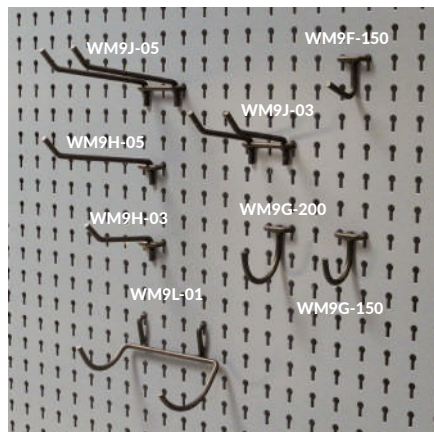
PRODUCT NO.	WIDTH
WM5C-16_	16"
WM5C-24_	24"

# COMPONENTS



## HOOKS AND HOLDERS

### LIGHT-DUTY HOOKS



- Our family of hooks makes it possible for you to store several types of parts
- Compatible with the panels currently available on the market (¼" holes)
- Rousseau utility panels (WM57, WM5B, SH67, SH68, SH69, SH77, SH79, SR79, RC02, RC93, RC94 and EP12)

- Color: black

TYPE/PACK	DIMENSIONS	PRODUCT NO.
Straight hooks/20	1½" D	WM9F-150
Single hooks/20	1½" dia.	WM9G-150
Single hooks/20	2" dia.	WM9G-200
Double back single hooks/10	3" D	WM9H-03
Double back single hooks/10	5" D	WM9H-05
Double back double hooks/10	3" D	WM9J-03
Double back double hooks/10	5" D	WM9J-05
Drill holder/1	5"W x 3 ½"D	WM9L-01

NOTES: The brackets and hooks are compatible with perforated panels with ¼" diameter holes located every 1" c/c. These panels are among the most popular on the market.

### HEAVY-DUTY SQUARE HOOK

WM9A

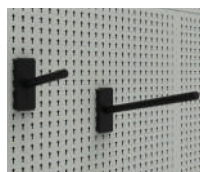


- Hooks onto utility panels WM57, WM5B, SH67, SH68, SH69, SH77, SH79, SR79, RC02, RC93, RC94 and EP12
- Flat surface on top
- Raised end to prevent accessories or tools from sliding off
- Hook-on installation
- Includes side notches for extra stability
- 50lb. load capacity
- Sold individually
- 1"W (two holes)
- Color: black

PRODUCT NO.	LENGTH
WM9A-03	3"
WM9A-06	6"
WM9A-12	12"

### HEAVY-DUTY ROUND HOOK

WM9B

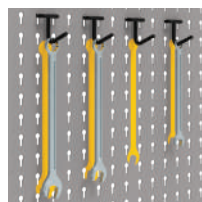


- Hooks onto utility panels WM57, WM5B, SH67, SH68, SH69, SH77, SH79, SR79, RC02, RC93, RC94 and EP12
- ¾" dia. tube
- Tools and accessories slide on and off easily
- Hook-on installation
- Includes side notches for extra stability
- 50lb. load capacity
- Sold individually
- Hook base: 2"W (three holes) x 5"H
- Color: black

PRODUCT NO.	LENGTH
WM9B-03	3"
WM9B-06	6"
WM9B-12	12"

### VINYL RUB-ON IDENTIFICATION DECAL

WM91



- For easy identification of where tools should be stored on utility panels
- Contrasting color so it is easy to notice when a tool is missing and what kind of tool it is
- Ideal for 5S method tool management
- Sold in rolls of 2"W x 8"L

PRODUCT NO.
WM91-01J

### DOCUMENT HOLDER

WM9S



- Hooks onto utility panels WM57, WM5B, SH67, SH68, SH69, SH77, SH79, SR79, RC02, RC93, RC94 and EP12
- 10° angle on the front face compared to vertical
- Front face lower than back to assist in identifying documents
- Designed for both letter and legal sized papers

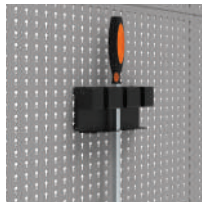
PRODUCT NO.	W x D x H
WM9S-01	12 ¼" x 3 ¾" x 10 ½"





## LONG TOOL HOLDER

WM9Q



- Hooks onto utility panels WM57, WM5B, SH67, SH68, SH69, SH77, SH79, SR79, RC02, RC93, RC94 and EP12
- Holds up to three long tools
- Easy to install
- Color: black

PRODUCT NO.	W × D × H
WM9Q-08	8" × 3" × 4"

## HAMMER SUPPORT

WM9R



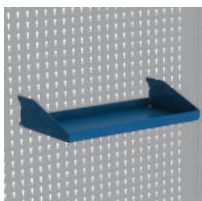
- Hooks onto utility panels WM57, WM5B, SH67, SH68, SH69, SH77, SH79, SR79, RC02, RC93, RC94 and EP12
- Holds up to 2 hammers
- Easy to install
- Designed for most plastic or rubber hammers and rubber mallets
- Color: black

N° DE PRODUIT	W × D × H
WM9R-09	9 1/16" × 2 1/16" × 5 3/16"

## LIGHTWEIGHT SHELF



EA28

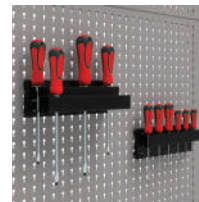


- Hooks onto utility panels WM57, WM5B, SH67, SH68, SH69, SH77, SH79, SR79, RC02, RC93, RC94 and EP12
- Allows the storage of small items
- Equipped with 1" front and rear edges to prevent items from falling
- Capacity: 10 lb

PRODUCT NO.	W × D
EA28-1508	15" × 8"

## SCREWDRIVER HOLDER

WM9N

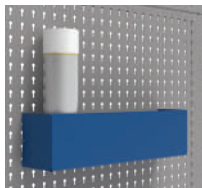


- Hooks onto utility panels WM57, WM5B, SH67, SH68, SH69, SH77, SH79, SR79, RC02, RC93, RC94 and EP12
- Holds 6-12 screwdrivers
- Color: black

PRODUCT NO.	VERSION	W × D × H
WM9N-01	Single	9" × 1" 1/2 × 2"
WM9N-02	Double	9" × 3" 1/4 × 2"

## CAN HOLDER

WM9D

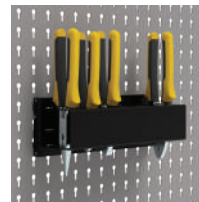


- Hooks onto utility panels WM57, WM5B, SH67, SH68, SH69, SH77, SH79, SR79, RC02, RC93, RC94 and EP12
- Ideal for storing various items of different sizes, such as aerosol cans
- Hook-on installation
- Includes side notches for extra stability
- Widths available: 6" (7 holes), 9" (10 holes), 12" (13 holes), 14" (15 holes), 15" (16 holes) and 20" (21 holes)
- To order: specify the width required

PRODUCT NO.	D × H
WM9D-__	3" × 4"

## PLIERS HOLDER

WM9M

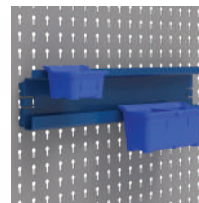


- Hooks onto utility panels WM57, WM5B, SH67, SH68, SH69, SH77, SH79, SR79, RC02, RC93, RC94 and EP12
- Holds up to six pliers
- Color: black

PRODUCT NO.	W × D × H
WM9M-01	9" × 2" 1/2 × 2"

## PLASTIC BIN RAIL

WM9C

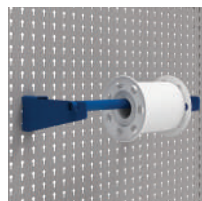


- Hooks onto utility panels WM57, WM5B, SH67, SH68, SH69, SH77, SH79, SR79, RC02, RC93, RC94 and EP12
- Plastic bins hook onto the rail for efficient storage of small parts
- Hook-on installation
- Includes side notches for extra stability
- Compatible with all brands of plastic bins with hanging lip on the market
- Compatible with RG20 plastic bins, [see page 256](#)
- Bins sold separately
- Widths available: 6" (7 holes), 9" (10 holes), 12" (13 holes), 15" (16 holes), 20" (21 holes), 23" (24 holes) and 26" (27 holes)
- To order: specify the width required

PRODUCT NO.	HEIGHT
WM9C-__	3"

## WIRE SPOOL AND ROLL HOLDER

WM9P



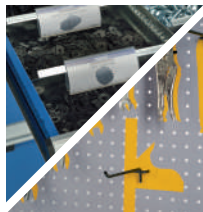
- Hooks onto utility panels (WM57, WM5B, SH67, SH68, SH69, SH77, SH79, SR79, RC02, RC93 and RC94)
- Ideal for wire spools or paper towel rolls
- Tube diameter: 3/4"
- Load capacity: 50lb.

PRODUCT NO.	WIDTH	NO. OF HOLES
WM9P-0901	9"	10
WM9P-1201	12"	13
WM9P-1501	15"	16
WM9P-2001	20"	21
WM9P-2301	23"	24
WM9P-2601	26"	27

# COMPONENTS

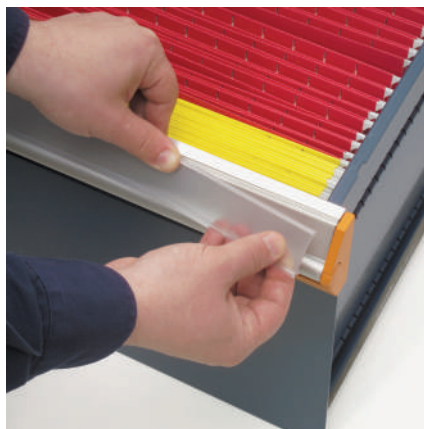


## 5S IDENTIFICATION

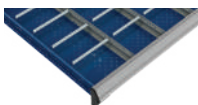
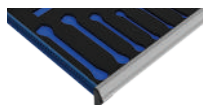
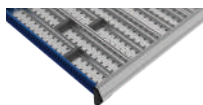


With a wide selection of identification accessories, you can organize your workspace more efficiently. Easy identification of parts, tools and accessories boosts your team's efficiency, facilitates stock taking, increases productivity and prevents expensive tools from being misplaced or lost. Taking the time to organize things well can save you time and money.

ACCESSORIES	PRODUCT NO.	CATALOG PAGE
1"H label holders	RG51	p. 283
Labels for label holders	RG53	p. 283
1"H label holders with adhesive	RG52	p. 283
1 ¾"H label holders	RG54	p. 284
1 ¾"H label holders with adhesive	RG55	p. 284
Handle protector	RF70	p. 284
Handle labels	RF71	p. 284
Vinyl rub-on identification decal	WM91-01J	p. 254



## DRAWER ACCESSORIES



We offer a wide variety of drawer accessories that integrate with each other to help you organize and locate small parts. They are ideal for high-density storage and ensure you retain space for growth.

ACCESSORIES	PRODUCT NO.	CATALOG PAGE
Front to back partition	RG00	p. 282
Side to side partition	RG01	p. 282
Divider	RG10	p. 283
Plastic bins	RG20	p. 285
Conductive plastic bins	RG21	p. 285
Divider for plastic bins	RG22/RG24	p. 286
Groove tray	RG35	p. 286
Divider for groove trays	RG39	p. 286
Tool foam	RG42	p. 285

### PLASTIC BIN

**RG20**


- For easier storing, moving and managing of small parts Lightweight and durable
- 45° angled rim for easy identification of bin contents and removal of bins
- Compatible with SH65, SH66, WM5C, RC04 and EP14 plastic bin panels, and EA32 / WM9C plastic bin rails
- 6" plastic bins can be subdivided

DIMENSIONS			PRODUCT NO.		
W	D	H	BIN	PARTITION	DIVIDER
3"	3"	2"	RG20-030302	-	-
4"	3"	2"	RG20-040302	-	-
6"	3"	2"	RG20-060302	RG22-0302	-
6"	6"	2"	RG20-060602	RG22-0602	RG24-0602
3"	3"	3"	RG20-030303	-	-
4"	3"	3"	RG20-040303	-	-
6"	3"	3"	RG20-060303	RG22-0303	-
6"	6"	3"	RG20-060603	RG22-0603	RG24-0603

NOTE: Height 2" = 1½" real  
Height 3" = 2½" real



WALL-MOUNTED WORKSTATIONS

WALL-MOUNTED WORKBENCH WITH WALL-MOUNTED CABINET



R5WH5-6010

DIMENSIONS			TYPE OF TOP		
W	D	PAINTED STEEL	STAINLESS STEEL	LAMINATED HARDWOOD	PLASTIC LAMINATE*
60"	30"	R5WH5-1010	R5WH5-6010	R5WH5-2010	R5WH5-3010

- 1 top of your choice
- 2 wall mounted open legs
- 2 leg crossbars
- 1 shelf
- 2 wall cabinets

NOTES: The leg height is 28" and top thickness is 1¾".  
\* The plastic laminate top is white by default. See page 144 for another option.

WALL-MOUNTED OPEN LEG

WS95



- Load capacity: 500lb. per leg,
- 1,000lb. per pair (if wall and wall anchoring are of sufficient strength)
- Anchoring hardware not provided by Rousseau
- Intended for 24"D, 30"D and 36"D tops
- Compatible with all types of top available from Rousseau
- Compatible with WS18 back stops and EW frame
- WS96 crossbars and a 12"D WS50 shelf (optional add-on) can be installed on this product

PRODUCT NO.	D × H
WS95-2428	22 1/8" × 29 1/8"

CROSSBAR FOR WALL-MOUNTED LEG

WS96



- For installation of a 12"D WS50 shelf between two WS95 wall-mounted legs

PRODUCT NO.	DEPTH
WS96-24	13 3/4"

