

NEW

ELEVATEK ADJUSTABLE WORKSTATION



DISTINCTIVE FEATURES

- Optimized for user comfort and efficiency
- Available with electric or crank lifting system, or manual adjustment
- Work surface height adjustable from 30" to 45"
- Stationary and mobile models available
- Configurable and scalable upper bench frame

COMBINE DESIGN AND
ERGONOMICS FOR GREATER
EFFICIENCY

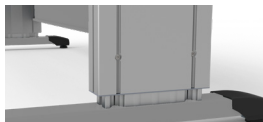


EK24KH-ED2003

ELEVATEK ADJUSTABLE WORKSTATION

IDEAL FOR A RANGE OF ENVIRONMENTS

HEIGHT ADJUSTMENT SYSTEMS



MANUAL ADJUSTMENT*



CRANK LIFTING SYSTEM**

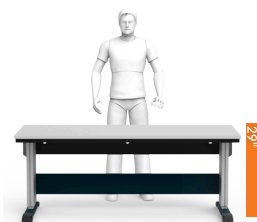


ELECTRIC LIFTING SYSTEM*

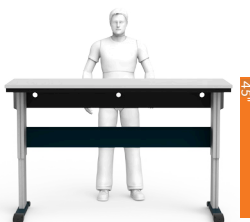
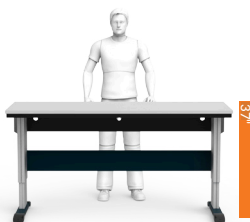
The stylish and streamlined ElevaTek combines great ergonomics and good looks. Designed with meticulous attention to detail, this height-adjustable workstation is suited to a wide variety of tasks. Whether you choose electric, crank or manual adjustment, the ElevaTek ensures you can always work comfortably and efficiently.

A GAME-CHANGING REVOLUTION

HEIGHTS



LOWEST POSITION



HIGHEST POSITION

The ElevaTek is available as a stationary or mobile unit, with centered or cantilever legs, and is compatible with a vast range of useful accessories. Among the new options is a laboratory top, power solutions, and an integrated mobile cabinet, which is designed to maximize your adaptability and productivity. With the ElevaTek, every detail has been carefully considered. ElevaTek is a trademark of Rousseau Metal Inc.

MULTIPLE CONFIGURATIONS



EK12KL-CC2



EK12KL-CC1



EK29KH-ED2002



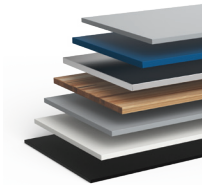
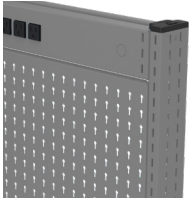
EK27LH-ED1005

NOTES: *Capacity: 1000 lb.

**Capacity: 675 lb

ENHANCED AESTHETICS

Accessories seamlessly integrate with no visible screws or gaps, offering a uniform overall look.

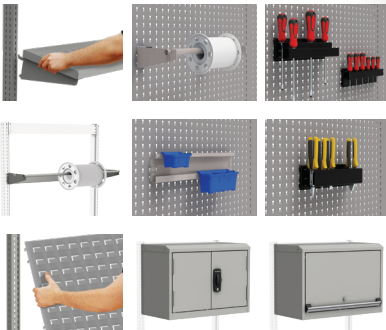


WORK SURFACES

Multiple work surface options, including a laboratory top made from phenolic resin.

ACCESSORIES

Configure the space above the workbench



UPRIGHTS

Uprights attach to the back of the workstation, leaving the entire work surface usable.



DRAWER UNITS

Optional drawer units and mobile cabinets can be added under the work surface.



EK24KH-ED2003



CABLE MANAGEMENT

The space between the front crossmember and rear crossmember can be used for cable management

DID YOU KNOW?

One of Rousseau's biggest strengths is our wide range of color options. Choose from 20 standard colors.

Classic Blue	Avalanche Blue	Everest Blue	Midnight Blue	Glossy Sapphire Blue	Glossy EverGreen	Glossy Yellow	Sienna Orange	Flame Red	Glossy Carmine Red	Glossy Cranberry Red	White	Beige	Frost White	Light Gray	Modern Gray	Charcoal Gray	Glossy Black	Black	Glossy Carbon Black
052	055	051	057	560	1025	208	085	081	806	815	616	041	061	071	745	072	902	091	741

PRECONFIGURED MODELS

Go to rousseau.com for more suggested models.



MOBILE ELEVATEK WORKBENCH WITH CRANK LIFTING SYSTEM

60" W x 30" D

EK12KH-CD1



STATIONARY ELEVATEK ADJUSTABLE WORKBENCH WITH CRANK LIFTING SYSTEM

60" W x 30" D

EK12KH-CD2



ELEVATEK ADJUSTABLE WORKSTATION WITH ESD PROTECTION KIT WITH ELECTRIC LIFTING SYSTEM

60" W x 30" D x 74" to 90" H

EK24KH-ED2003



ELEVATEK ADJUSTABLE WORKSTATION WITH ELECTRIC LIFTING SYSTEM

72" W x 30" D x 83" to 99" H

EK28LH-ED2004



ELEVATEK ADJUSTABLE WORKSTATION WITH CRANK LIFTING SYSTEM

60" W x 30" D x 71" to 87" H

EK22KH-CD1006

For more information, contact our representative:

ROUSSEAU METAL INC.

105, AVENUE DE GASPÉ OUEST
SAINT-JEAN-PORT-JOLI (QUÉBEC)
G0R 3G0 CANADA

WEBSITE
rousseau.com

END USERS
1.866.463.4270
EMAIL
info@rousseau.com

DISTRIBUTORS
1.800.463.4271
DISTRIBUTORS ACCESS
e-rousseau.com



Printed in Canada

7PV31A00
V31-FE25A